

CREEDE REPERTORY THEATRE

your theatre, always


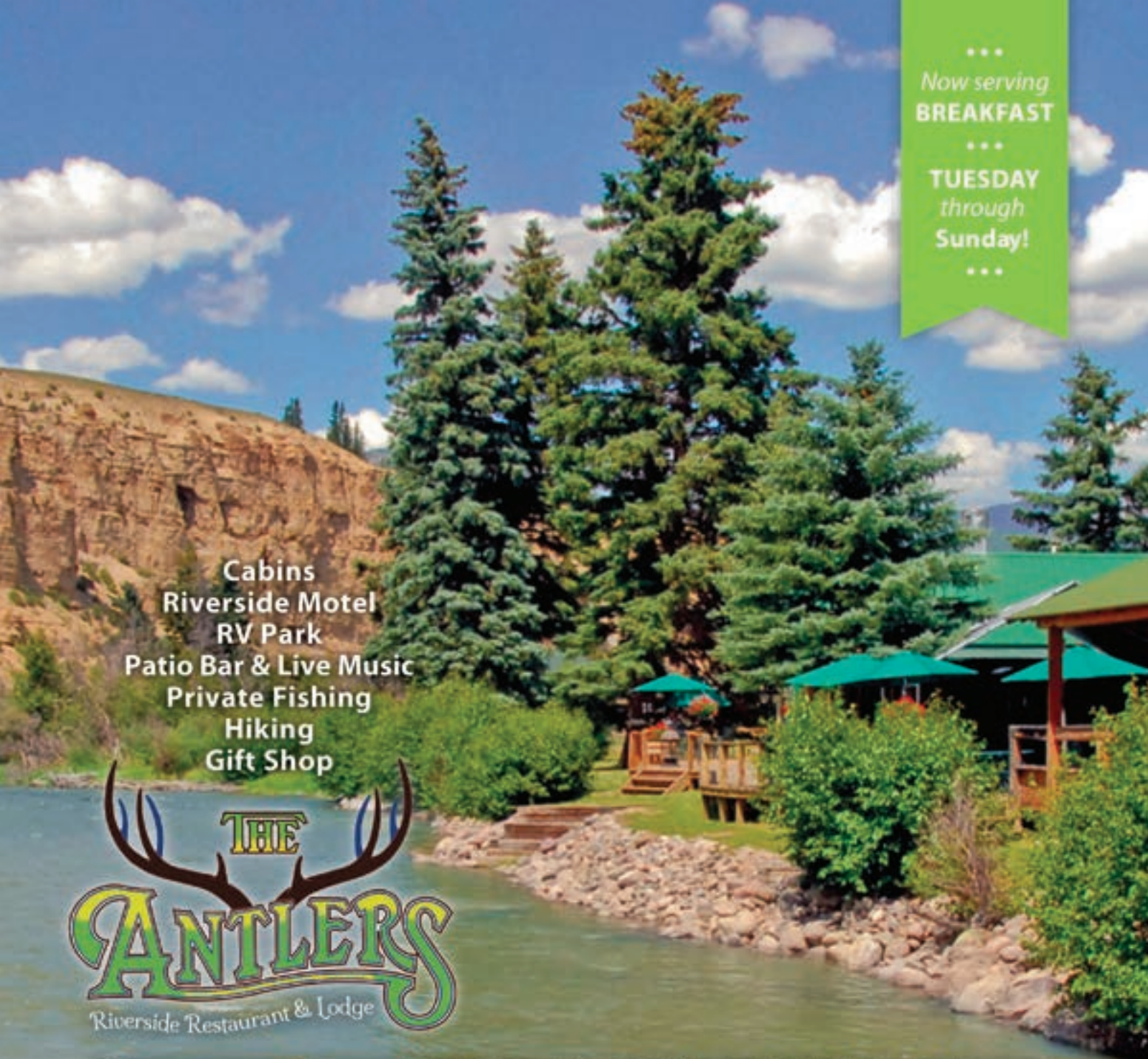


Photo from John Gary Brown's first season in 1974. Mandy Patinkin and Cynthia Appley in *The Girl from Maxim's*.

OUR 58TH SEASON

Celebrating Six Decades of John Gary Brown Photography

(719) 658-2540 / creederep.org



...
Now serving
BREAKFAST
...
TUESDAY
through
Sunday!
...

- Cabins
- Riverside Motel
- RV Park
- Patio Bar & Live Music
- Private Fishing
- Hiking
- Gift Shop



Enjoy our Riverside Restaurant

Excellent dinners served on the deck of our beautiful dining room Tuesday through Sunday www.facebook.com/antlerslodge
ON THE RIO GRANDE • 719-658-2423 • 26222 HWY 149 • CREEDE, COLORADO • www.antlerslodge.com

Our 58th Season | 2023
TRANSFORMATION

The story of Cinderella is all about transformation. A young woman living in a terrible situation is, by her own kindness and a little magic, transformed into a princess. The transformation from Operation Summer Theatre to Creede Repertory Theatre has also seemed magical in its own way. In a 1968 article by founding company member Joseph Roach, he writes that it can be easy to think that the creation of this little theatre at 9,000ft was all about passion, timing, and magic; certainly some of it was. But it was also created through hard work, conflict, doubt, and sleepless nights. In 1966, a community of longtime Creede residents, the Junior Chamber of Commerce, and a band of newcomers came together against all odds to make magic happen. As Creede Repertory Theatre continues to evolve, we will never forget the hard work of so many.

May we never stop transforming.



Founding company members in the Silver Palace, now Quiller Gallery



From left Tracy Rogers Trow, Betsy Rogers, Dylan Trow, Dannie Rogers

This season we remember Tracy Rogers Trow, beloved community member and daughter of founding Jaycee members, Betsy and Dannie Rogers.

introduction

TABLE OF CONTENTS

Schedule 4
 At a Glance 8
 Mission, Vision, Goals 11
 Equity, Diversity & Inclusion 13
 Ken Ludwig's *Dear Jack, Dear Louise* 14
Clue: On Stage 16
Mountain Octopus 18
The Royale 20
 Rodgers + Hammerstein's *Cinderella* 22
 The KID Show: *Ask a Kid* 27
Boomtown! 29
 Headwaters 31
 Educational Programs 33
 Supporting CRT 36
 John Gary Brown 40
 Memorials & Honorariums 52
 Board of Trustees 53
 Our Company 54
 In Memory 76
 Our Staff 77

Follow us!

- @CreedeRepertoryTheatre
- @CreedeRep
- @CreedeTheatre

Creede Repertory Theatre Inc. is a not-for-profit organization with a 501(c)(3) status with the Internal Revenue Code. All donations are tax deductible.

Production photos by John Gary Brown and McLeod9 Creative. Additional photography by Brooke Ashlee Photography, Ramsay de Give, and CRT Staff.

Jaycee & Jaycee-ette Appreciation Day:
SUNDAY, AUGUST 6, 2023
Before the 1pm performance of *Clue: On Stage*



Jaycee-ette Float on the 4th of July

2023 SCHEDULE

schedule of shows

	TUESDAY	WEDNESDAY	THURSDAY	FRIDAY	SATURDAY	SUNDAY
MAY	16	17	18	19 7:00PM Dear Jack OPENS	20	21
	23	24	25	26 7:00PM Octopus* OPENS	27 7:00PM Octopus*	28 7:00PM Dear Jack
	30	31	1 7:00PM Dear Jack LOCAL DISCOUNT	2 7:00PM Octopus* PRESHOW TALK	TASTE OF CREEDE	
JUNE	6	7	8	9	10 1:00PM Octopus* 6:00PM OPENING NIGHT CELEBRATION & POSTER UNVEILING 7:00PM Clue OPENS	11 1:00PM Dear Jack CHAT BACK AFTER
	JUNE 6-9 / ADULT ACTING CAMP			CREEDE DONKEY DASH		
	13 7:00PM Clue	14 7:00PM Dear Jack	15 7:00PM Octopus* LOCAL DISCOUNT	16 7:00PM Clue	17 1:00PM Clue 7:00PM Octopus* PRESHOW TALK	18 1:00PM Dear Jack
	JUNE 13-16 / FAIRYTALE THEATRICAL DESIGN CAMP			ACTION STORYTIME / 10AM		
	20 7:00PM Octopus*	21 7:00PM Dear Jack	22 7:00PM Clue LOCAL DISCOUNT	23 7:00PM Boomtown!*	24 7:00PM Octopus*	25
	JUNE 20-23 / MUSICAL THEATRE CAMP					
	27	28 7:00PM MINING THROUGH POETRY, STORIES, & SONG*	29	30 7:00PM Cinderella OPENS	1 1:00PM Cinderella 7:00PM Clue 9:30PM Boomtown!*	2 1:00PM Clue CHAT BACK AFTER 7:00PM Octopus*
	JUNE 27-30 / MYSTERY CHARACTER CREATION CAMP			ACTION STORYTIME / 10AM		
	4 6:00PM Cinderella	5 7:00PM Dear Jack	6 7:00PM Octopus*	7 6:00PM ROYAL TEA PARTY 7:00PM Cinderella 9:30PM Boomtown!*	8 1:00PM Cinderella 7:00PM Clue	9 1:00PM Clue CHAT BACK AFTER
	4TH OF JULY PARADE 10AM					
11 7:00PM Dear Jack	12 7:00PM Cinderella PRESHOW TALK W/TED CHAPIN LOCAL DISCOUNT	13 7:00PM A CELEBRATION OF RODGERS + HAMMERSTEIN**	14 9:30PM Boomtown!*	15 1:00PM Clue 7:00PM The Royale*	16 1:00PM Cinderella 7:00PM Octopus* PRESHOW TALK	
18 7:00PM Octopus*	19 1:00PM Dear Jack 7:00PM The Royale* LOCAL DISCOUNT	20 1:00PM Octopus* 6:00PM CLIFFSIDE PIANO BAR 7:00PM Clue	21 1:00PM Dear Jack 7:00PM Clue 9:30PM Boomtown!*	22 1:00PM The Royale* PRESHOW TALK 6:00PM ROYAL TEA PARTY 7:00PM Cinderella	23 1:00PM Cinderella CHAT BACK AFTER 6:00PM CLIFFSIDE PIANO BAR 7:00PM Clue	

	TUESDAY	WEDNESDAY	THURSDAY	FRIDAY	SATURDAY	SUNDAY
JULY	25 7:00PM Cinderella	26 1:00PM Dear Jack 7:00PM Clue	27 7:00PM Clue	28 11:00AM The KID Show* OPENS 6:00PM ROYAL TEA PARTY 7:00PM Cinderella 9:30PM Boomtown!*	29 1:00PM The KID Show* 6:00PM CLIFFSIDE PIANO BAR 7:00PM Clue	30 1:00PM The KID Show* 7:00PM CHAT BACK AFTER Cinderella
	1 7:00PM Clue	2 1:00PM The Royale* PRESHOW TALK 7:00PM Cinderella	3 1:00PM Cinderella 6:00PM CLIFFSIDE PIANO BAR 7:00PM Clue	4 1:00PM Octopus* PRESHOW TALK 6:00PM CLIFFSIDE PIANO BAR 7:00PM Dear Jack 9:30PM Boomtown!*	5 1:00PM The Royale* 6:00PM ROYAL TEA PARTY 7:00PM Cinderella CHRISTINA AWARD	6 1:00PM Clue CHAT BACK AFTER JAYCEE APPRECIATION 7:00PM Octopus*
AUGUST	8 7:00PM Clue	9 1:00PM Cinderella 7:00PM The Royale*	10 7:00PM Cinderella	11 1:00PM Octopus* + 7:00PM Clue + 9:30PM Boomtown!*	12 1:00PM Cinderella + 6:00PM CLIFFSIDE PIANO BAR 7:00PM Dear Jack +	13 1:00PM The Royale* + CHAT BACK AFTER Clue
	15 7:00PM The Royale* PRESHOW TALK	16 1:00PM Cinderella 6:00PM CLIFFSIDE PIANO BAR 7:00PM Dear Jack	17 1:00PM Octopus* 7:00PM Clue	18 1:00PM The Royale* 6:00PM ROYAL TEA PARTY 7:00PM Cinderella 9:30PM Boomtown!*	19 1:00PM Octopus* 6:00PM CLIFFSIDE PIANO BAR 7:00PM Clue	20 1:00PM Cinderella 7:00PM JOHN GREEN: DO YOU REMEMBER?*
	22 7:00PM Cinderella	23 1:00PM Cinderella 6:00PM CLIFFSIDE PIANO BAR 7:00PM Clue	24 1:00PM Octopus* 7:00PM The Royale*	25 10:00AM YAOT 1:00PM Dear Jack 7:00PM Cinderella 9:30PM Boomtown!*	26 10:00AM YAOT 11:15AM ROY G BIV 1:00PM PRIMA'S GUIDE* 7:00PM Octopus* CLOSES	27 10:00AM HEADWATERS BRUNCH Clue CHAT BACK AFTER The Royale* PRESHOW TALK
	HEADWATERS NEW PLAY FESTIVAL					
	29 7:00PM 10 MINUTE PLAY FESTIVAL*	30 7:00PM The Royale*	31 7:00PM Clue	1 6:00PM CLIFFSIDE PIANO BAR 7:00PM Dear Jack 9:30PM Boomtown!*	2 1:00PM Clue CLOSES 7:00PM The Royale* CLOSES	3 1:00PM Dear Jack CHAT BACK AFTER
	SALSA FIESTA/MOUNTAIN RUN					
	5	6	7	8 7:00PM Dear Jack 9:30PM Boomtown!*	9 1:00PM Dear Jack 7:00PM JOHN GARY BROWN CELEBRATION*	10 1:00PM Dear Jack
	12	13	14	15 7:00PM Dear Jack 9:30PM Boomtown!*	16 7:00PM Dear Jack CLOSES	17
	CRUISIN' THE CANYON					

■ DEAR JACK, DEAR LOUISE
■ MOUNTAIN OCTOPUS
■ CLUE
■ CINDERELLA
■ THE ROYALE
■ BOOMTOWN!
■ THE KID SHOW: ASK A KID

* Denotes shows in The Ruth.
 + Denotes ASL-interpreted performance.

SINGLE TICKETS START AT:

Adults: \$38 | Seniors: \$36
Students (5 - 16): \$20 | Boomtown: \$15
 Prices vary by seating location.
 \$3 service charge per ticket.
 \$2 Blue Star Discount for active military & veterans.
 Our shows are intended for ages 5+.

GO REP!

See 3 or more shows and save up to 10% with the Multi-Show Discount!

GROUPS

10+ people get 10% off when paying together.

RED CARPET PASS

Get unlimited access to all regular season performances for \$600/person!

TICKETS

(719) 658-2540 | crederep.org
boxoffice@crederep.com



KNOW BEFORE YOU GO

Scan the QR code or check in with the Box Office for a complete list of content advisories, trigger warnings, and recommendations of age appropriateness.



HEALTH & SAFETY

Visit our website for current Health & Safety policies and the most up-to-date information.



GRAND OPENING

OF OUR NEW
STATE-OF-THE-ART
KITCHEN

May 2023

Listed on the Colorado
and National Register
of Historic Places



THE CREEDE HOTEL & RESTAURANT

Serving the community since 1892

Daily specials by Chef John Arp Outdoor dining under our Mega-tent
Live entertainment & local art Historic downtown setting
Event Catering: all sizes, kinds, locations Period hotel rooms

www.thecreedehotel.com
For reservations call 719-658-2608

hello!

Dear Friends,

Welcome to Creede Repertory Theatre's 58th Season. For many, the Creede Repertory Theatre is a family tradition going back decades. Some experienced Creede Rep as a child and now share the theatre with their grandchildren. For those joining us for the first time, I hope this is the start of your own tradition.

When CRT first started in 1966, most folks thought it was a crazy experiment, but there is a magic here unlike anything I've experienced anywhere else. Your love and loyalty have preserved and inspired us through CRT's most difficult times. While many theatres have struggled to regain even 50% of their prepandemic audience, you have been here with us because you're a big part of that magic and you know the importance of live theatre.

Is live performance really important? The answer is a resounding yes! Here are my reasons why: 1) Live theatre is a powerful way to build community by creating connections through shared experiences. For example, you may not laugh while watching a funny movie alone, but when watching a live stage adaptation, the collective laughter will infect the whole audience. 2) Theatre requires the audience's focus and engagement. We live in an age of multitasking and "keeping in touch with the world" through social media. Before a play begins, we ask you to turn off your cell phone. It may be the only two hours of the day when you completely forget about that phone. 3) Theatre requires you to use your imagination, suspend your disbelief, and connect with others.

Part of the fun of repertory theatre is the subtle connections between the plays. Each of the shows this year is set during a time of great political and social unrest: a struggling kingdom on the brink of revolution; the United States at the turn of the twentieth century; the heart of the Red Scare in the 1950s; on the front lines of a world war; and at home in a little mountain town today. Each play offers a different take on how we can live during tumultuous times, whether it's doubling down on kindness, breaking through the shackles of a prejudiced society, just trying to make it out of trouble alive, falling for someone you've never met, or rallying around a rural community.

We are thrilled to have you in the Creede Repertory Theatre family. And for us, it really is a family. So don't be shy; please say hi! I'd love to hear how your visit is going, whether it's your first or 100th.

Sincerely,



John DiAntonio
John DiAntonio
Producing Artistic Director
john@creederep.com
(719) 658-2540 ext. 2005



This 2013 Broadway adaptation of the classic story crackles with sweetness and freshness and features new characters; a hilarious libretto by Tony Award-winning playwright Douglas Carter Beane; exciting twists; and the classic score by Rodgers and Hammerstein featuring unforgettable songs such as “In My Own Little Corner” and “Ten Minutes Ago.” A magical delight for the entire family.

Musical, Family Friendly, Romance



It's a dark and stormy night, and you've been invited to a very mysterious dinner party at the ominous Boddy Manor. Each of the guests has an alias, the butler offers a variety of weapons, and the host is, well, dead. Join the iconic cast of characters known as Scarlet, Plum, White, Green, Peacock, and Mustard as they race to find out *whodunnit* before the body count stacks up. *Clue* will keep you guessing—and laughing—all the way to the end.

Comedy, Mystery



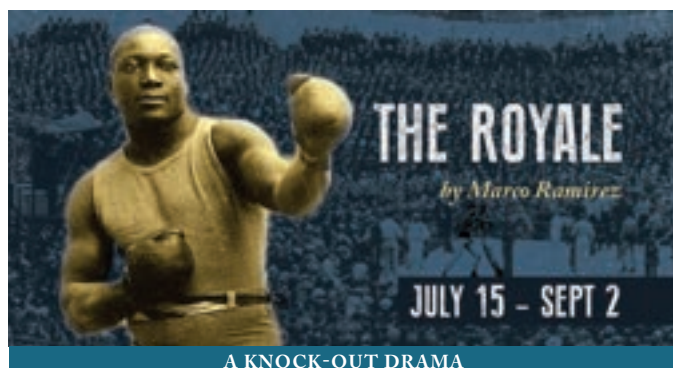
Sparks fly and love blossoms from a world away when US Army Doctor Jack begins a correspondence with aspiring actress Louise during WWII. Based on the story of his parents' courtship, Tony Award-winning playwright Ken Ludwig (*Sherwood, Lend Me a Tenor*) explores love, isolation, and hope over great distance. This certified hit of 2021's outdoor season heads inside to the Mainstage, starring Caitlin Wise and Graham Ward.

Romantic Comedy



One year after a tragic loss, a small town full of quirky characters gathers together to patch up what's broken. Nothing goes quite as planned... but ultimately each person finds something unexpected within their old familiar world or something that feels like home in a new and unfamiliar place. Funny and heartwarming with a touch of magical realism, *Mountain Octopus* will remind you of the simple power of a good story. This world premiere by Beth Kander (*Hazardous Materials*) features CRT favorites Christy Brandt and Kate Berry.

World Premiere, Dramedy



The most anticipated show of 2022 has finally arrived. Jay “The Sport” Jackson dreams of being the undisputed heavyweight champion of the world. But it's 1905, and in the racially segregated world of boxing, his chances may be as good as knocked out. But when the fight of his life comes calling, Jay must face both his future and the shadow of his past. Inspired by the life of Jack Johnson, *The Royale* brings to explosive life the ultimate fight for a place in history.

Drama



A group of friends form an advice column for students at their school, and it's a runaway success. But when the questions coming in start getting weird, the kids investigate. Is someone pranking them—or are these bizarre messages surprisingly sincere? A new sci-fi musical about friendship, empathy, and what it means to be human.

World Premiere, Family Friendly

SPECIAL EVENTS

22ND ANNUAL NATIONAL SMALL PRINT SHOW

May 27–June 23 / Mainstage Lobby / Free

This juried exhibition contains over 100 small prints from fine artists across the country. Whether you collect or just appreciate, come celebrate the miniature medium! This year's judge is Santa Fe-based print artist AnaMaria Samaniego.

OPENING NIGHT CELEBRATION & POSTER UNVEILING

June 10 / 6pm / Mainstage Lobby / Free

Join us in celebrating our 58th Season before the opening night performance of *Clue: On Stage*. Show your *Clue* ticket, and receive a free beverage. Plus, be the first to glimpse our 58th season poster!

MINING THROUGH POETRY, STORIES, AND SONGS

June 28 / 7pm / The Ruth / \$20

It's back! Join the Creede Historical Society for their celebration of mining through poetry, stories, and songs. All proceeds benefit the Creede Historical Society.

A CELEBRATION OF RODGERS & HAMMERSTEIN

July 13 / 7pm / The Mainstage / \$50

This once-in-a-lifetime celebration features a collaboration between Creede Repertory Theatre and the Creede Musical Arts Collective (CMAC) and showcases Creede Rep's musical talent along with CMAC's world class singers as they explore the works of Richard Rodgers and Oscar Hammerstein II. Our host for the evening is CRT alumnus Ted Chapin, who served as the president of the Rodgers & Hammerstein Organization for 40 years.

DO YOU REMEMBER? A CONCERT WITH JOHN GREEN

August 20 / 7pm / The Ruth / Pay What You Can

Through stories, songs, and poems about now, then, and somewhere in between, John Green will once again try to help make sense of it all with our senses.

at a glance



10-MINUTE PLAY FESTIVAL

August 29 / 7pm / The Ruth / Pay What You Can

See page 31 for details.

CLIFFSIDE PIANO BAR NEW!

6pm / Cliffside Patio (just north of the Mainstage Lobby)

On select evenings before performances of *Dear Jack*, *Dear Louise* and *Clue: On Stage*, grab a signature cocktail, relax, and enjoy live music by this season's most talented musical artists. See schedule on pages 4 & 5 for dates.

ROYAL TEA PARTIES NEW!

Ages 0–10 / Cliffside Patio / \$20 for ages 2+, \$5 per accompanying adult

Before select performances of *Cinderella*, join us for a magical tea party complete with fairy tales, activities, and treats. See schedule on pages 4 & 5 for dates. Rain location: *The Ruth*.

BEHIND THE CURTAIN

Deepen your connection to the plays, stories, and complex inner workings of live theatre through our FREE Audience Enrichment programs. Check our calendar for dates, or inquire at the box office.

PRESHOW TALKS

These preshow conversations offer an interactive dramaturgical experience. In turn, you'll connect and relate even more with our diverse repertory season. Arrive 35 minutes before showtime for select shows.

CHAT BACKS

Stick around after most Sunday matinee performances as our artists answer your burning questions and share fascinating stories about the creation of the play.

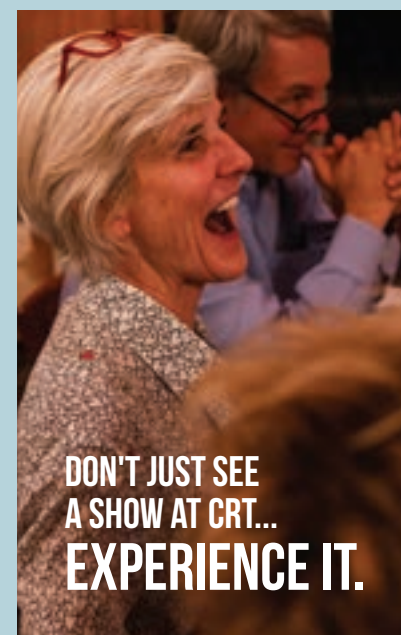


A SPECIAL PRESHOW TALK WITH TED CHAPIN

CRT alumnus Ted Chapin (1976–78) was the president of the Rodgers & Hammerstein Organization for 40 years. His knowledge of the pair, their history, and music is unparalleled.

We sit down with Ted to pick his brain about R & H, *Cinderella*, and more! Before the July 12 performance of *Cinderella*.

Questions about CRT's Behind the Curtain programs? Contact Education Director Brittini Shambaugh Addison at (719) 658-2540 ext. 2011 or brittni@creederep.com



DON'T JUST SEE A SHOW AT CRT... EXPERIENCE IT.

Photo by Brooke Ashlee Photography



2023 Calendar of Events

- May 26-28** Annual of Taste of Creede
Festival of Fine Arts & Dining
- June 10** Donkey Dash Pack Burro Race
- June/July - Wednesdays**
Creede Chute Out Bull Riding/Rodeo
- July 3-4** July 4th Street Festival & Parade
Fireworks • Mining Events • Elks Lodge Dance
- July 8-14** Creede Woodcarvers Rendezvous
- July 23** Gravity Derby
- Aug 4-6** Rock & Mineral Show, Snowshoe Shuffle
- Aug TBD** Silver Thread Artist's Studio Tour
- Aug 26-27** Headwaters Music Festival
- Sep 2-4** Labor Day Weekend • Salsa Fiesta
Creede Mountain Run
- Sept 15-17** Cruisin' the Canyon Car Show
Silver Threads Quilt Show • Steamroller
Printmaking
- Nov 24-25** Thanksgiving Chocolate Festival
- Jan 13-14** Golden Pick Tommyknocker Pond
Hockey Tournament



Visitor Center

904 S. Main St. • Open Every Day
Visitor Guides • Area Maps • Free WiFi
Silver Thread Scenic & Historic Byway
Large scale model of 1892 North Creede



MISSION

From its Rocky Mountain roots, Creede Repertory Theatre serves as an artistic home to our rural community and beyond, through the creation of repertory seasons, dynamic educational programs, and compelling new works.

VISION

Creede Repertory Theatre will be a haven for artistic excellence, belonging, and intrinsic joy.

GOALS

ARTISTRY

CRT will expand our artistic reach and national reputation through increased programming, strategic partnerships, and investment in our artists.

COMMUNITY

CRT will deepen connections within our rural community and beyond, creating an artistic home for all artists, patrons, and students.

SUSTAINABILITY

CRT will support the economic prosperity of our region, grow as an essential community partner, and reach new levels of sustainability in our finances, facilities, and staff.

She Knows Her Lures
Ceramic Sculpture by
BRENDA JONES



Glow, Double Moon Acrylic/Watercolor painting by
Sandy Applegate



Sacrifice Custom Metalsmith work of
Cheryl J. Streams



Woman in Green Dress a Fine Art giclée by
Lindsey Leavell



available at
131 North Main St
Creede, CO 81130
719-658-2736

A locally owned gallery of
Fine Art paintings, prints,
sculpture, ceramics, jewelry,
and so much more...

EQUITY, DIVERSITY, AND INCLUSION

EDI



Creede Repertory Theatre is striving toward a Culture of Belonging for everyone who comes through our doors. We have made great progress as an organization and acknowledge that there is still a lot of work to do. We will continue practicing self-reflection by asking the tough questions, listening deeply to our community, and implementing practices and policies that affirm and uplift others' humanity. We are committed to being your theatre, always.

The vision of CRT is to be a haven for artistic excellence, belonging, and intrinsic joy. For our artists to be truly excellent at CRT, we must see and support them. For our community to truly belong, they must be heard. To bring about true joy, we must continue to create spaces for connection, conversations, and deeper understanding. We will continue creating policies and procedures that make this vision possible.

The CRT Staff Equity, Diversity, and Inclusion committee (est. 2017) and the CRT Board of Trustees (BOT) Justice, Equity, Diversity, and Inclusion committee (est. 2020 by the BOT) continue to integrate practices that strengthen our commitment to a Culture of Belonging.

CREATING A CULTURE OF BELONGING:

- Providing accessible childcare for all company members with children.
- Celebrating our 3rd Annual American Sign Language (ASL) Weekend; providing an ASL interpreted performance of each of our season's shows.
- Collaborating with seasonal company members operating as EDI Deputies to explore different perspectives and problem-solving.
- Providing a Boundary Practice or time to create mutual community agreements, for all company members to facilitate a safe space in their work environments.
- Hosting continual Staff and Board EDI learning opportunities in order to continue evaluating our organizational structure and actionable items for change within CRT.



The 3rd Annual ASL Weekend:
AUGUST 11-13, 2023

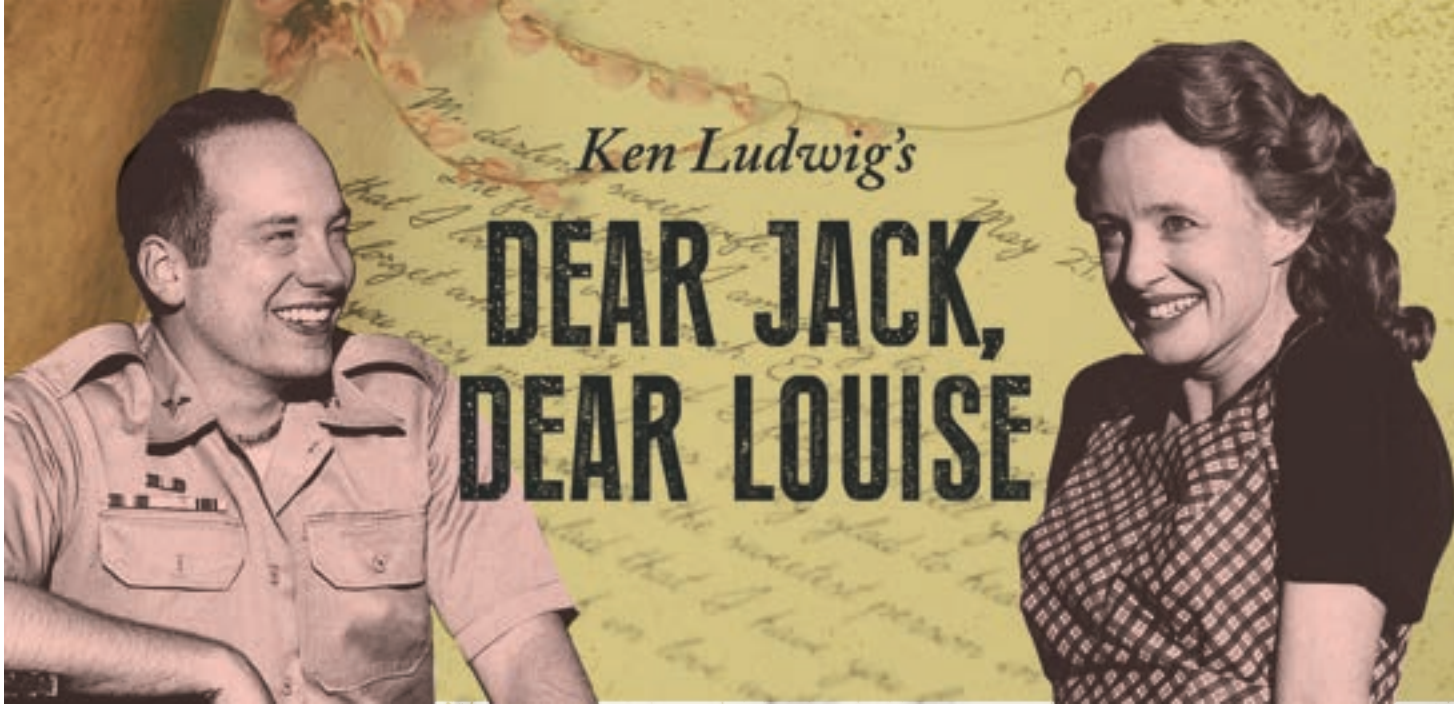
2023 EDI DEPUTIES

DAVID CLEGHORN

SAMMY HEROUX

KAE TWICHELL

The current committee chair is Jenni Harbour, Associate Education Director, supported by a team of EDI Deputies from various departments in the Season Company. For any questions, please do not hesitate to reach out to jenni@crederep.com.



WHY ARE WE BRINGING IT BACK?

In Creede Rep's first ever Outdoor Season in 2021, *Dear Jack, Dear Louise* captivated audiences with the story of "love from a distance." Many patrons were truly moved by this touching account of a courtship between Jack Ludwig and Louise Rabiner told through the letters they shared.

"This year, friends brought us to *Dear Jack, Dear Louise*. We loved it and had to see it again, bringing relatives. I just bought tickets to see it...a third time with more relatives and friends. One friend just lost her husband, a WWII veteran."

"It was a very affective and emotional experience for me, since I'm having a similar correspondence with a friend from the past. I'm always impressed with the ingenuity of CRT to set and convey a story, even on a 10'x20' stage. Great!"

"I just retired from the Army last year. My wife and I were celebrating our 7th anniversary

and saw this show. It ended up being a super emotional experience for us and helped us process through some of the lingering emotions we were hanging on to from our Army experience. It was tough for us. This show was such a help, and we are grateful to the actors and everybody involved for making it such a wonderful experience. Thank you."

And when asked what audiences would like to see on our stages in the future, one patron replied:

"*Dear Jack, Dear Louise*. Same actors. I know; I know. But for both my husband and myself, it is a favorite performance. It had us from start to finish. I lived in NYC for 12 years. I saw a lot of performances: chamber music, symphony concerts, operas, musicals, jazz in great old clubs, plays on and off Broadway...and this performance is one of my favorites. If I were able, I would attend it every time."



DIRECTOR'S NOTES



Michael Perlman

When my grandparents passed away almost 20 years ago, we found letters that they had written to each other during their courtship, during which time my grandfather was in Tel Aviv and my grandmother was in Vienna. From April 1935 through July 1936, when my grandmother finally made the journey to join him, they shared stories of their lives, their hopes, and their fears. They broke up a few times. And they waited impatiently to receive the next letters.

I was struck when I read these letters by how utterly familiar they felt. Online dating is faster, and yet we're still as impatient when we see those three little dots flashing as my grandmother was when she would run to the postal box every day to see if a letter had arrived. The method has changed, but the desire for love and connection is a constant.

I first encountered Ken Ludwig's funny and poignant *Dear Jack, Dear Louise* in December of 2019 and was reminded of these letters and of the special gift my family has of being able to read them and connect to them these many years later. When we mounted this play during CRT's outdoor season in 2021, after a long period of isolation and loss for many of us, what was a wistful and lovely story of two people overcoming the obstacles of distance to touch one another with their words had taken on richer and deeper meaning, and the awe-inspiring vista gave the play an almost operatic feel. Returning to it in the intimate setting of the Mainstage, it reminds us again that the most important things in our lives are our relationships and the ways in which those connections help us move through even the most challenging obstacles.

BRINGING THE OUTDOORS > IN

WHAT WILL IT TAKE?

"With this remount, we are interested in keeping the integrity of the show that so many of our audience loved while using all of the tools that our theatre has to offer. For example, we know we can't replicate the natural beauty of Creede that was our backdrop. What we can do is use immersive lighting and sound in our space to help our audience 'lean in' to this story."

—Jake Harbour, Director of Production and Facilities

shows

One 15-Minute Intermission

CREATIVE TEAM

Director	Michael Perlman+
Scenic Design	AnnDee Alvidrez
Costume Design	Elly Hunt
Lighting Design	Kevin Frazier
Sound Design/Composer	Ethan Fuller
Wig Design	Diana Ben Kiki
Dramaturg	Courtney Cauthon

STAGE MANAGEMENT

Stage Manager	Wilhelm Peters*
Asst. Stage Manager	Miranda Ray

CAST

Jack Ludwig	Graham Ward*
Louise Rabiner	Caitlin Wise*

Ken Ludwig's *Dear Jack, Dear Louise* is presented by arrangement with Concord Theatricals on behalf of Samuel French, Inc. www.concordtheatricals.com

Dear Jack, Dear Louise premiered at Arena Stage (Washington, DC); Molly Smith, Artistic Director and Edgar Dobie, Executive Producer; November 21-December 29, 2019.

Content Information: This production contains descriptions of war and violence, some strong language, and a love story that ends happily.



*Member of Actors' Equity Association, the Union of Professional Actors and Stage Managers in the United States.



The Director is a member of the STAGE DIRECTORS AND CHOREOGRAPHERS SOCIETY, a national theatrical labor union.



THE SLATER FAMILY





CLUE: A PLAY BASED ON A MOVIE BASED ON A BOARD GAME



Clue, the board game, was first created in 1944 England by Anthony Pratt. A musician by trade, prior to World War II, Pratt often found himself playing piano in large mansions where occupants and guests would “play act” wild murder mysteries. Years later, to rid himself of boredom during WWII air raids, he and his wife created the first iteration of the game, originally titled Murder!



Promotional shot from the 1985 film



Clue: On Stage at Bucks County Playhouse (2017)

The game was released in 1949 as Cluedo in England and Clue in the United States. Both versions looked very similar to the game we have come to recognize today, with players collecting clues to figure out the suspect, weapon, and location of the murder of the infamous Mr. Boddy. Over the years, the premise of the game has remained unchanged, but characters and weapons have morphed to meet modern sensibilities.

In the early 1980s, director John Landis was tapped to turn the popular game into a movie. Finding the right writer for the project was challenging

however, and it took nearly four years and six writers to land on Jonathan Lynn. Lynn was presented with the daunting task of taking the characters, weapons, and mansion from the game and creating a cohesive story with not one but FOUR endings.

The now-cult-classic movie debuted in 1985 to less-than-stellar reviews, and the multiple endings (condensed to three in postproduction) caused more stress than success at the box office, because audience members had to choose which version to see. At the time of release, the *Chicago Sun-Times* commented, “Fun, I must say, is in short supply,” while the *New York Times* noted, “There is so little genuine wit to be found in *Clue*.” It was not until it was released on video with all three endings combined that it found a boom in popularity, making it one of the most beloved movies of all time.

Clue: On Stage debuted in 2017. Based on the movie, it keeps the idea of multiple endings without requiring audiences to see the show multiple times.



John DiAntonio

DIRECTOR'S NOTES

Clue: On Stage—a hilarious farce, a tantalizing murder mystery, filled with your favorite Creede Rep actors. Welcome to Boddy Manor, where the bodies are piling up. I hope we all make it out alive. A beloved board game-turned cult classic film-turned stage play—“the course of true love never did run smooth.” The setting: the height of the Red Scare and McCarthyism, when accusations of subversion were made without any regard for evidence...

Who doesn't love a good murder mystery? Now spice it up with a nice bit of blackmail and a healthy dose of sensuality and frost it all with absolute silliness. We had a rollicking good time creating this show, and we're excited to take you on the journey. I hope it will leave cult fans and newcomers in stitches as they try to figure out WHO did it, WHERE, and with WHAT?!



shows

No Intermission

CREATIVE TEAM

Director	John DiAntonio
Scenic Design	Lindsay Fuori**
Costume Design	Rebel Mickelson
Lighting Design	Kevin Frazier
Sound Design	Johnathan Taylor
Music Director/Piano	Andy Hudson
Intimacy Choreographer	Jenni Harbour
Fight Captain	Lavour Addison

STAGE MANAGEMENT

Stage Manager	Wilhelm Peters*
Asst. Stage Manager	Miranda Ray

CAST

Wadsworth	Graham Ward*
Yvette	Heidi Carann Snider
Miss Scarlet	Dana Cullinane
Mrs. Peacock	Anne Faith Butler*
Mrs. White	Caitlin Wise*
Colonel Mustard	Lavour Addison*
Professor Plum	Lee Hollis Bussie*
Mr. Green	Andy Brown
Ensemble Woman	Savanna Padilla
Ensemble Man 1	Matthew Tyler Horn*
Ensemble Man 2	Stuart Rider*

Additional Material by
Hunter Foster and Eric Price
Based on the Paramount Pictures Motion Picture
Based on the Hasbro board game CLUE
Original Music by Michael Holland

Clue: On Stage is presented by special arrangement with Broadway Licensing, LLC servicing the Dramatists Play Service collection.
www.dramatists.com

By special arrangement with The Araca Group, Work Light Productions, and Michael Barra/Lively McCabe Entertainment.

Content Information: This play contains lots of murder, mystery, and laughs.



*Member of Actors' Equity Association, the Union of Professional Actors and Stage Managers in the United States.

** Terrence and Polly Jones Scenic Designer



CHARLES & KAREN
NEARBURG





PLAYWRIGHT NOTE: BETH KANDER

April 2020: I was home. Illinois had again extended statewide stay-at-home orders as COVID-19 surged. Every production inquiry I was pursuing after Creede Rep's terrific 2019 world premiere of *Hazardous Materials* abruptly vanished. My husband and I were working remotely while figuring out the new Zoom preschool system for our three-year-old. That month, huge storms flooded our basement, leaving a foot of standing sewage water, costing us painful thousands in restoration and ruining irreplaceable possessions. On top of all that, I was three months pregnant.

Everything felt uncertain, overwhelming, and flat-out frightening. And that's when John DiAntonio sent me an email about a CRT play commission.

When I was offered this chance, there were two ways I could have responded. I could have said no, I'm drowning right now and don't even know if I have a theatrical future,

which would have been an honest reply, informed by my stress and heartache. Or I could have said yes, thank you, this leap of faith for all of us is the lifeline I need.

I said yes—and “can we choose hope even when doubt is clamoring as loud as it can?” became the question at the heart of *Mountain Octopus*.

The characters in this play live in a place called Chance. They're all struggling. They have valid reasons to reject the opportunities extended to them. The ways they navigate their options, take tentative steps forward, and push away or draw near to one another isn't just how the characters find their way.

It's how we all do.

Thank you, CRT, for the gift of hope—and thank you, audience, for being that hope.

BETH KANDER AT CREEDE REPERTORY THEATRE

2018

Hazardous Materials is part of the Headwaters New Play Festival



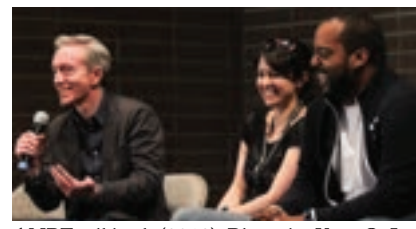
2019

Hazardous Materials debuts as part of the 2019 season



2020

Creede Rep commissions Beth to write a piece for Headwaters 2022



ANPF talkback (2018). Photo by Kara Q. Lewis



Betty Hart

DIRECTOR'S NOTES

Mountain Octopus takes place in the summer of 2022 in a small town called Chance, which just might remind you of Creede, Colorado. Everyone knows everyone in Chance, and tourists flock there every summer. Remind you of anywhere you know? Chance is in the process of reopening—not just shops and restaurants but also their hearts from the pandemic challenge of the past few years. How do you get back to normal? How do you resume the regular cadence of love and laughter and the need for daily coffee? This town is grappling with those questions. Maybe you are too.

And they are dealing with the loss of a beloved community member. To everything there is a season, a time to be born and a time to die. We know how to celebrate birth. We don't always know how to celebrate, honor, and grieve those who have departed. How do we navigate the conflicting negative emotions and the deeper positive emotions that remain? Is it ok to still love someone after they have gone? The folks of Chance are grappling with this and how to live together again.

Beth Kander lovingly investigates these questions and aspects of small-town life: everyone knowing everyone; people getting in your business; and the love, joy, and laughter of a community that truly is your family—whether you want them to be or not. I invite you to journey with us as you become part of our Creede Repertory Theatre family.



DID YOU KNOW?

Ava's painting, *Mountain Octopus*, was created by internationally known painter Stephen Quiller, who works primarily in water media, monotypes, and intaglio printmaking.

shows

One 15-Minute Intermission

CREATIVE TEAM

Director	Betty Hart
Scenic Design	Lindsay Fuori**
Costume Design	Rebel Mickelson
Lighting Design	Kevin Frazier
Sound Design	Max Silverman

STAGE MANAGEMENT

Stage Manager	Mary Ruth Knackstedt*
Asst. Stage Manager	Kelsea Sibold

CAST

Helen	Kate Berry*
Kurt	Stuart Rider*
Michael	Matthew Tyler Horn*
Martha	Christy Brandt*
Ava	Teonna Wesley*
Lou	Savanna Padilla
Charlie	Cameron Davis

Content Information: This play contains some mild language and small town drama.

Commissioned and produced as part of the Headwaters New Play Program



Developed under CRT's Headwaters New Play Program.



*Member of Actors' Equity Association, the Union of Professional Actors and Stage Managers in the United States.

**Terrence and Polly Jones Scenic Designer



ROBERT & JULIA
JOHNS

STEVE & MARTI
KIELY



2021

Virtual reading of *To the Moon*



2022

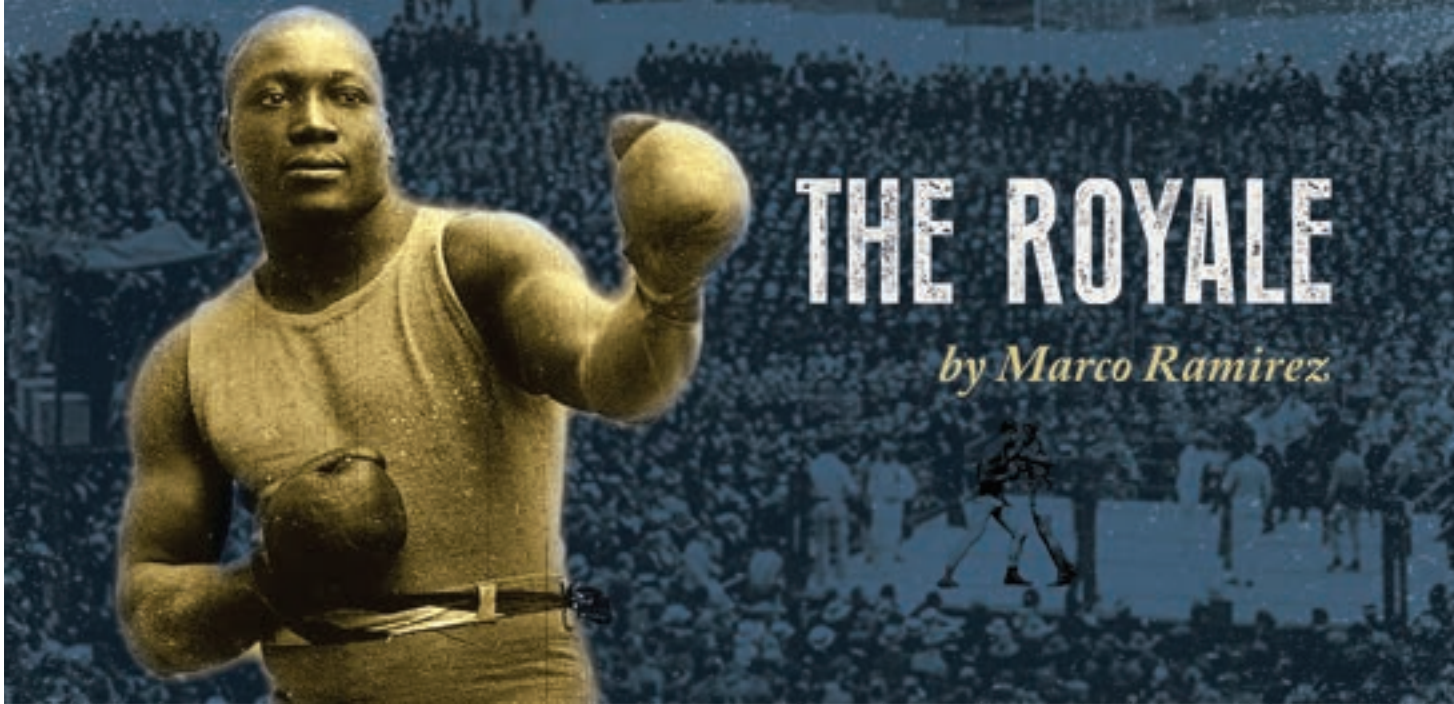
Mountain Octopus (commissioned show) as part of the Headwaters New Play Festival



2023

Mountain Octopus debuts as part of the 2023 season





BOXING: A BRIEF HISTORY

With visual evidence dating back to ancient Mesopotamia, boxing has been around for thousands of years. It first appeared as a formal Olympic event in Ancient Greece, circa 688 BCE. Romans took the sport even further into gladiatorial arenas, typically ending with the death of the losing boxer. As Christianity rose in popularity along with the decline of the Roman Empire, boxing as entertainment fell by the wayside for many centuries.

Though illegal at the time, bare-knuckle boxing (without gloves) reemerged in Britain in the 1680s and grew in popularity through the mid-1700s. It is supposed that more formal rules were enacted by fighter Jack Broughton after one of his opponents succumbed to fight-related injuries. Broughton was known as the “Father of Boxing,” employing gloves to protect both fighter and opponent. Ironically, instances of brain injury went up after the

addition of gloves because boxers were more likely to aim for the head rather than aiming for softer places to protect their bare hands.

Boxing began to gain respectability when it rose in popularity among members of English aristocracy. Boxing athletes were seen as ideals of manliness and honor. In 1804, at age 36, Bill Richmond fought in his first professional fight and became the first African American sports celebrity. Born into enslavement in New York, Richmond spent most of his life in England. He spectacularly won fights into his 50s due to his unique boxing style and strategy. Both Richmond and later his protégé, American Tom Molineaux, helped bring the popularity of professional fighting from Britain to America. The early twentieth century saw a rise in American-dominated world boxing champions, and its popularity shows no signs of stopping.



Two Mesopotamian boxers, c. 2000 BCE from Eshnunna, (Modern-day Iraq)



A drawing of Bill Richmond (1810)



Jack Dempsey

A CREEDE CONTENDER

Jack Dempsey aka “The Manassa Mauler” became the heavyweight champion of the world in 1919. Dempsey was born in Manassa, CO, just south of Alamosa in the San Luis Valley, and grew up in Lower Creede (Jimtown) around the turn of the century.



Kyle Haden

DIRECTOR'S NOTES

“Just remember, whatever you write about me, that I was a man.”—*Jack Johnson*

“Society was in trouble, and Jack was just being himself.”—*James Earl Jones, on Jack Johnson*

Jack Johnson was not perfect; he was a flawed human being who made many mistakes. He knew this. He was also one of the greatest heavyweights boxing has ever known and reached the height of his powers at a time when American society was not ready for a Black champion. He probably knew this too.

Marco Ramirez’s play about Jay “The Sport” Jackson gives us a peek at what obstacles Jack Johnson faced on his way to becoming the heavyweight champion of the world and how he might have dealt with them. As we move further into the twenty-first century and watch our latest generation of athletic heroes start to ride off into the sunset (Tom Brady, Serena Williams, Roger Federer, Sue Bird, Mike Krzyzewski) or edge toward the exit (Tiger Woods, Lionel Messi, LeBron James), I think about: What do we ask of our heroes? What did we ask of Jack Johnson? Is it his fault that society wasn’t ready for his greatness? Didn’t know what to do with his charisma, his style and flair, his brashness? His Blackness?

We were disappointed to not have a chance to tell this story last summer. But—cue the boxing metaphor—like any great champion, we’re back in the ring, and we’re coming out swinging. We’re glad you’re back with us to share in this story.



Jack Johnson



Burns vs Johnson in 1908

JACK JOHNSON

The Royale is based on the life of Jack Johnson, who became the first Black heavyweight champion in 1908 after defeating Australian Tommy Burns. But it was Johnson’s win against former heavyweight champion Jim Jeffries that sealed his legacy as a boxing superstar.

shows

One 15-Minute Intermission

CREATIVE TEAM

Director	Kyle Haden
Scenic Design	Lindsay Fuori**
Costume Design	Alethia Moore-Del Monaco
Lighting Design	Bryan Ealey
Sound Design	Max Silverman
Wig Design	Diana Ben Kiki
Fight Director	Lavour Addison*
Dramaturg	Ellen Valencia

MANAGEMENT

Stage Manager	Wilhelm Peters*
Asst. Stage Manager	Miranda Ray

CAST

Jay	Tony King
Wynton	Lavour Addison*
Nina	Teonna Wesley*
Fish	Cameron Davis
Max	Stuart Rider*

The Royale is presented by arrangement with Concord Theatricals on behalf of Samuel French, Inc. www.concordtheatricals.com.

Center Theater Group/Kirk Douglas Theatre, Michael Ritchie, Artistic Director produced the World Premiere of *The Royale* in Los Angeles, CA in 2013.

Originally Produced by Lincoln Center Theater, in 2016, New York City.

Content Information: This play contains strong language and mature content, including descriptions of self-harm, racism, and racial violence.



*Member of Actors’ Equity Association, the Union of Professional Actors and Stage Managers in the United States.

** Terrence and Polly Jones Scenic Designer

JEN HOUSTON & ALAN BUSCHE



PAUL & JENNIFER HARRISON



Valley Courier

Rodgers + Hammerstein's

CINDERELLA

Music by Richard Rodgers

Lyrics by Oscar Hammerstein II

New Book by Douglas Carter Beane

Original Book by Oscar Hammerstein II

Orchestrations by Danny Troob

Music Adaptation & Arrangements by David Chase



ACT I

"Overture" – Orchestra

1. "Prologue" – Ella & Chorus

1a. "Battle with the Giant" – Orchestra

2. "Me, Who Am I?" – Topher, Sebastian, Lord Pinkleton, Knights & Pageboys

2a. "Cinderella Enters" – Orchestra

2b. "Topher Rides Off" – Orchestra

3. "Parade of Purchases (Cinderella March)" – Orchestra

4. "In My Own Little Corner" – Ella

4a. "In My Own Little Corner Tag/Your Majesty" – Ella, Lord Pinkleton & Topher

5. "The Prince Is Giving A Ball / Now Is The Time" – Sebastian & Jean-Michel

5a. "Fol-De-Rol (Scene Change)" – Marie

5b. "Venetian Glass" – Orchestra

6. "Off to the Ball (Cinderella March)" – Madame, Gabrielle & Charlotte

7. "In My Own Little Corner (Reprise)/Fol-De-Rol" – Ella & Marie

8. "Impossible" – Marie & Ella

8a. "Transformations" – Orchestra

8b. "It's Possible" – Ella, Marie & Chorus

8c. "Into the Palace" – Orchestra

9. "Gavotte" – Orchestra

10. "Ridicule" – Lord Pinkleton & All

10a. "Kindness" – Orchestra

11. "Ten Minutes Ago" – Topher & Ella

12. "Waltz for a Ball" – Orchestra

13. "Ten Minutes Ago (Reprise)" – Ella

13a. "Finale Act I" – Orchestra

Additional Lyrics by Douglas Carter Beane, David Chase & Bruce Pomahac

ACT II

14. "Entr'acte" – Orchestra

15. "Stepsister's Lament" – Charlotte & Ladies of the Court

15a. "Call to Arms" – Lord Pinkleton, Topher, Lords of the Court, Pages, Ella, Footman & Coachman

16. "The Pursuit" – Lord Pinkleton, Topher, Lords of the Court, Pages, Ella, Footman & Coachman

16a. "He Was Tall" – Ella

17. "When You're Driving Through The Moonlight" – Ella, Charlotte, Gabrielle & Madame

18. "A Lovely Night" – Ella

18a. "It Was You Tonight, Wasn't It?" – Orchestra

19. "A Lovely Night (Reprise)" – Gabrielle & Ella

20. "Loneliness of Evening" – Topher & Ella

21. "Announcing the Banquet (The Prince is Giving a Ball Reprise)" – Sebastian, Lord Pinkleton, Heralds & Madame

21a. "Madame Rips the Dress" – Orchestra

22. "There's Music in You" – Marie

23. "The Banquet" – Lord Pinkleton & Herald Trumpeters

23a. "Now is the Time (Underscore)" – Orchestra

24. "Now is the Time (Reprise)/More Fol-De-Rol" – Jean-Michel, Gabrielle and Marie

25. "King Topher" – Crowd

26. "Do I Love You Because You're Beautiful?" – Topher & Ella

26a. "Midnight Again" – Orchestra

26b. "Eight O'Clock and All is Well" – Lord Pinkleton

26c. "Ella in Rags" – Marie

27. "The Proposal" – Topher, Ella & Company

28. "The Wedding (Finale)" – Ella, Topher, Lord Pinkleton, Marie & Company

29. "Bows" – Full Company

30. "Exit Music" – Orchestra

DIRECTOR'S NOTES



Brittni Shambaugh Addison

SEBASTIAN: What is this bewitchery you practice?

ELLA: It's just kindness.

Imagine—a world in which everyone focused first and foremost on being KIND. A world in which that kindness was TRANSFORMATIVE. A world in which, on the day when you overslept, lost your dog, dropped your phone, misplaced your car keys, and stubbed your toe, every person you encountered along the way presented you with KINDNESS. How much more bearable would that day have been?! What a beautiful world that would be!

And yet, a world like that feels so improbable. Implausible. IMPOSSIBLE.

But let's just IMAGINE. Let's escape into a world where nothing is impossible. A world in which simple acts of kindness open the door for magic, wonder, and happily ever afters. As you sit in the theatre, allow yourself to escape into the pages of a fairy tale book. As you watch the players bring this story to life, allow yourself to believe in magic. And as you see a beloved story presented in a new way, allow yourself to trust that the impossible is possible.

"I think probably kindness is my number one attribute in a human being. I'll put it before any of the things like courage or bravery or generosity or anything else." —*Roald Dahl*



Disney's Cinderella

shows

One 15-Minute Intermission

CREATIVE TEAM

Director	Brittni Shambaugh Addison
Music Director	Andy Hudson
Dance Choreographer	Nikki Mirza
Scenic Design	Lindsay Fuori**
Costume Design	Becca Janney
Lighting Design	Kevin Frazier
Sound Design	Johnathan Taylor
Intimacy Choreographer	Jenni Harbour

STAGE MANAGEMENT

Stage Manager	Mary Ruth Knackstedt*
Asst. Stage Manager	Kelsea Sibold

CAST

Ella	Heidi Carann Snider
Topher	Tony King
Lord Pinkleton	Matthew Tyler Horn*
Madame	Anne Faith Butler*
Sebastian	Lee Hollis Bussie*
Marie	Dana Cullinane
Gabrielle	Savanna Padilla
Charlotte	Bethany Eilean Talley
Jean-Michel	Lavour Addison*
Ensemble	Teonna Wesley*
Ensemble	Graham Ward*
Ensemble	Sierra Stallman
Ensemble	Cameron Davis

BAND

Piano	Andy Hudson
Cello	Megan Rayl
Reed Doublor	Dawson Horey

Cinderella is presented by arrangement with Concord Theatricals on behalf of The Rodgers & Hammerstein Organization. www.concordtheatricals.com

Content Information: This play contains music, romance, and lots of magic.



*Member of Actors' Equity Association, the Union of Professional Actors and Stage Managers in the United States.

** Terrence and Polly Jones Scenic Designer



PEGGY LONGWOOD LAMB





Come Home TO THE MOUNTAINS

Hi...

Creede becomes 'home' to all those who visit. It is a magical place I found some 38 years ago and Dale is a native. Dale and I are locals who find joy in creating relationships with our customers and clients. We love Creede in all seasons; skiing, hiking, biking, and riding the high country on our horses. Let us help you find your 'home'.

Anne and Dale Pizel (Brokers/Owners)



(top) *Cinderella* with Julie Andrews (1957)
(bottom) *Cinderella* with Lesley Ann Warren (1967)

CINDERELLA THROUGHOUT TIME

Throughout history and across the world, there have been thousands of renditions of the Cinderella story. Scholars have, in fact, identified at least 345 variants of the Cinderella story in Europe alone. The earliest recorded tale is from Strabo, a Greek storyteller who recorded the story of Rhodopis between 7 BCE and 23 CE. Rhodopis was a young courtesan who attracted the attention of the pharaoh when an eagle flew off with her sandal and dropped it in the pharaoh's lap. The pharaoh was so intrigued by the shoe that he commissioned a search for the owner.

The Chinese have the story of Ye Xian 叶限, which can be dated to about 860 CE. The Malay-Indonesian people have the tale of Bawang Putih Bawang Merah, and the Vietnamese have Tam Cam. However, the version most recognized when translated into English comes from

the French writer Charles Perrault in his "*Histoires ou contes du temps passe,*" written in 1697. This version was the inspiration for the 1950 Walt Disney animated film, which included the iconic transformative pumpkin, Fairy Godmother, and glass slipper.

Rodgers + Hammerstein's *Cinderella* was originally commissioned as a made-for-TV movie starring Julie Andrews. It aired live on CBS in 1957, and two subsequent TV versions were created—one in 1967 starring Lesley Ann Warren and one in 1997 starring Whitney Houston and Brandy. These three movie adaptations also inspired three Broadway musical adaptations, the most recent being in 2013. This version (which Creede Rep is currently producing) strove to create a Cinderella with "modern sensibilities" and "a whole lot of traditional theatre magic."



Cinderella with Brandy and Whitney Houston (1997)



Santino Fontana and Laura Osnes as Topher and Ella on Broadway (2013)

shows



A Unique New Neighborhood In Creede

World Headquarters

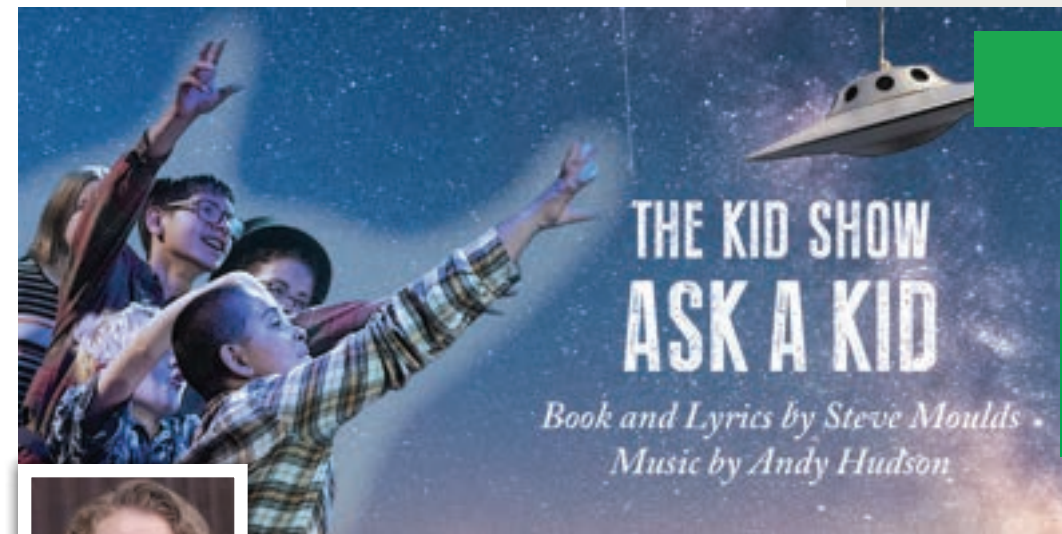
114 North Main St.
Creede, CO
719.658.0223

www.creedeamerica.com

CREEDE
AMERICA



education



CREEDE
REPERTORY
THEATRE



DIRECTOR'S NOTE

Jenni Harbour

I was a preteen during the pivotal beginnings of social media as a form of communication and expression. I fancied myself a coding genius because I was able to embed sad, angsty music and deftly change the order of my "Top Eight" friends on my MySpace profile. Those years of Instant Messenger away messages and early Facebook statuses were meant to bring us closer together as a society, but I couldn't help feeling very alone behind my keyboard. In *Ask a Kid*, we get to explore what it means to be human in this increasingly digital age. Can we truly connect through emojis, GIFs, and WikiHows? Can we invite others into our humanity through a digital friend request? We can trust each other... right? The KID Show program was my first introduction to working with the Education Department at Creede Rep. I am constantly learning, growing, and being inspired by our resilient students who decide to take the leap and do theatre together at 9,000ft. I would ask these "kids" anything and be excited for the insight into our humanity that would be revealed in their answers.

CREATIVE TEAM

Playwright	Steve Moulds
Director	Jenni Harbour
Scenic Designer	Jesse Wade
Costume Designer	Tiffany Stone
Lighting Designer	Willow McGinty
Sound Designer	Lia Morris



Developed under CRT's Headwaters New Play Program.

SPONSORS

Antlers Rio Grande Lodge
& Riverside Restaurant
Genny Basler Memorial Fund
Hitchcock Foundation
The McShane & Sloan Families
Quiller Gallery

THE KID SHOW'S 21ST SEASON!

PARTICIPATE!

Are you age 10+ and interested in being part of The KID Show? Rehearsals for *Ask a Kid* begin on July 11 and culminate on the closing of the show, July 30. Scan the code and register today!

The Ruth Humphreys Brown Theatre

July 28 / 11am • July 29 / 1pm • July 30 / 1pm

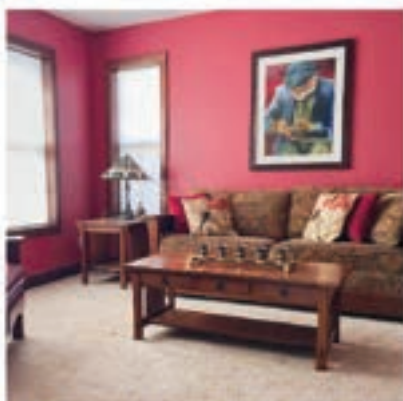
Now in its 21st season, The KID Show program provokes and empowers young creative minds to develop and produce a new play, while placing them in a professional environment and encouraging them to play!



To register, reserve your **FREE** tickets, or for more information, scan the code or contact Education Director Brittnei Shambaugh Addison at (719) 658-2540 ext. 2011 or brittnei@creederep.com.



LUXURY LIVING ACCOMMODATIONS
ON CREEDE'S MAIN STREET
210-861-8882 • dragonflyflatscreede.com

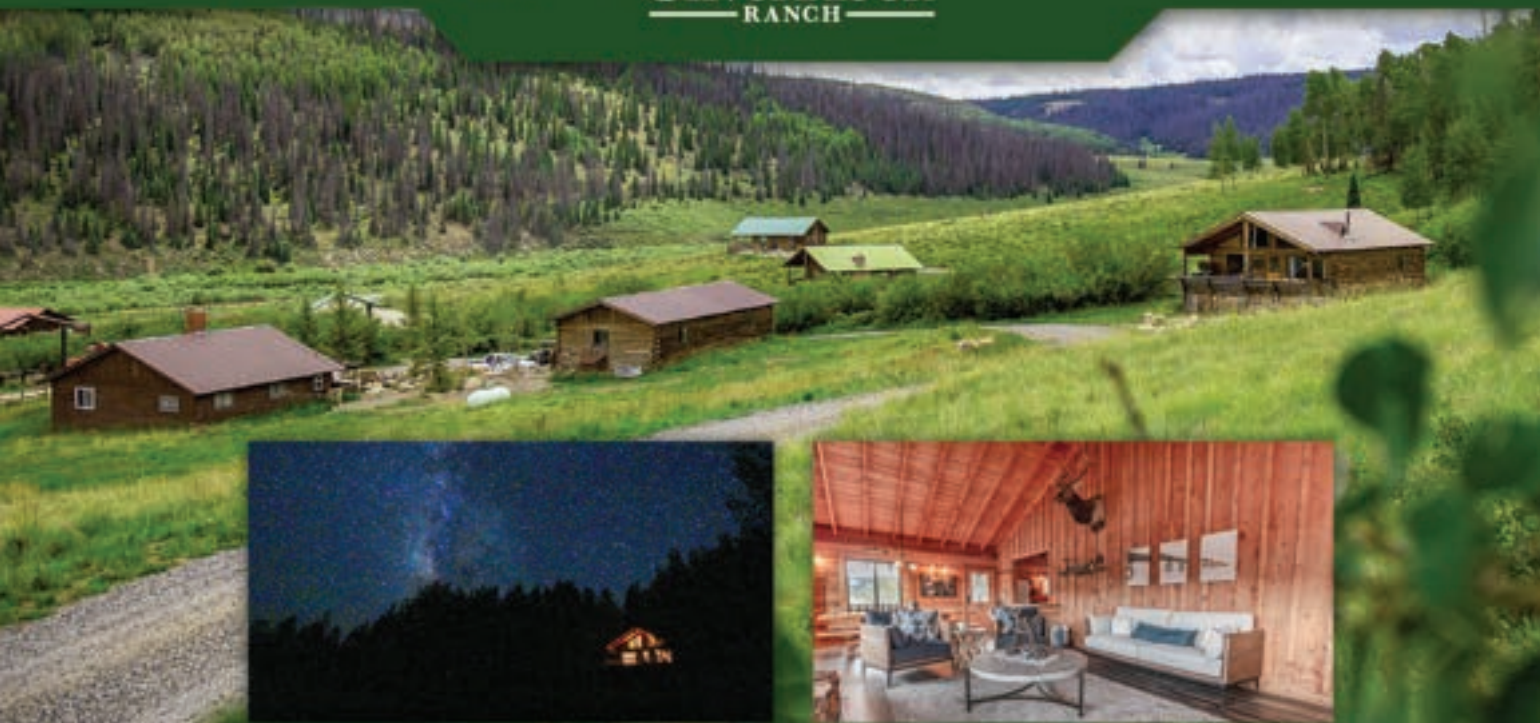


4 fully-equipped Flats • Rent separately or together • Each Flat accommodates 2-8 people (total of 19)
Recently Renovated • WiFi • Kitchens • W/D • Porch Swing • Private Backyard Retreat

Secluded off-the-grid cabins
Miles of scenic hiking trails
Five stocked fishing ponds
Boarding and horseback riding
1½ miles of private stream fishing



210-545-2181
oleoranch.com



shows



Photo by McLeod9 Creative



SHOWS @ 9:30PM
EVERY FRIDAY NIGHT*

JUNE 23* — SEPT 15

at the Ruth Humphreys Brown Theatre
\$15 General Admission

One 10-Minute Intermission

CAST

Cameron Davis
John DiAntonio
Heidi Carann Snider
Caitlin Wise
Graham Ward
And more less-funny people!

CREATIVE TEAM

Musical Improviser	Andy Hudson
Tech Improvisors	Jake Harbour
Lighting Design	& Miranda Ray
	Willow McGinty

17 years of funny... *Boomtown!* is back! We're on the edge of seventeen. Adulthood is so close, yet still so far away, and even though we're old enough to see R-rated movies now, we're still bringing you side-splitting PG-13 laughs every show. ABBA put it best: "Only seventeen, dancing queen, feel the beat from the tambourine," at *Boomtown!* Improv Comedie.

With the 9:30pm start time, you can be home and in bed sipping a warm glass of milk by 11pm! Book early—seats are limited!

SPONSORS

Dragonfly Flats & Oleo Ranch	San Juan Sports
Kip's Grill	Ussery Enterprises Inc.
Michele & Courtney LaZier	

*All performances on Fridays except for Saturday, July 1. Show starts at 7pm on June 23.



4UR RANCH

CREEDE, COLORADO

4URRANCH.COM

719.658.2202

CREEDE REP HEADWATERS NEW PLAY PROGRAM

Now in its 11th season, the Headwaters New Play Festival will showcase a commissioned work written specifically for CRT. Throughout this process, the play is developed with a team of professional theatre artists and receives a public reading. After its reading at last year's festival, *Mountain Octopus* by Beth Kander (*Hazardous Materials*, *To the Moon*) is receiving its world premiere this season. This year's festival will feature a new work by Leonard Madrid (*Cebollas*, *Aurora*).



headwaters

Reading of *Mountain Octopus* (2022)

THIS YEAR'S PLAYS

The Prima's Guide to Funerals

By Leonard Madrid

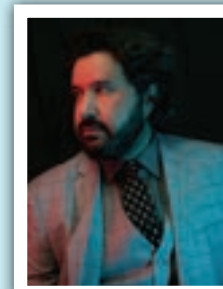
T. Jefferson Carey Memorial Playwriting Award Recipient

AUGUST 26 / THE RUTH / 1PM

Three cousins, an urn, and one really long day. A comedy set along the Rio Grande River in the San Luis Valley of southern Colorado, *The Prima's Guide to Funerals* tells the story of love, grief, and laughter that can only exist in tight relationships among cousins.

Meet The Playwright

Leonard Madrid is a theatre artist based in New Mexico. He is the Artistic Director of Blackout Theatre in Albuquerque. His plays have received the Kennedy Center's award for Latinx playwrights three times. He has also participated in the Ignition Festival at Victory Gardens in Chicago, The Ground Floor at Berkeley Rep, and the Colorado New Play Summit at the DCPA. Leonard is a theatre professor at Eastern New Mexico University.



World Premiere of

The City Dog & The Prairie Dog

Book and Lyrics by Diana Grisanti

Music by Emiliano Messiez

AUGUST 25 & 26 / VIRGINIA CHRISTENSEN

MULTI-USE FACILITY / 10AM

See page 35 for more information.

Tiny Tour: *ROY G BIV*

By Brittni Shambaugh Addison

AUGUST 26 / VIRGINIA CHRISTENSEN MULTI-USE FACILITY 11:15AM

Jee is an Artist. Jee LOVES the color green. Jee paints green SQUARES, green CIRCLES, and even green SQUIRCLES! But when a new artist enters Jee's life, his world is turned upside down, as he is introduced to all colors of the rainbow. This 25-minute show designed for our youngest learners (ages 5 and under) will be produced in 2024 as part of CRT's Tiny Tour, traveling to preschools throughout the Southwest.

10-Minute Play Festival

AUGUST 29 / THE RUTH / 7PM / PAY WHAT YOU CAN

The company-generated 10-Minute Play Festival is back by popular demand. One of the most exciting nights of the season, fully produced original plays are inspired by a common theme, starring our talented company like you've never seen them before.

AND...

Join us for a Meet & Greet Brunch with our fantastic Headwaters artists on Sunday, August 27 at 10am at the Mainstage Cliffside Patio, catered by The Mac Mine.

THANK YOU TO OUR HEADWATERS SPONSORS

Pete & Lindsey Leavell and The Mac Mine

THE STUDIOS AT BRISTOL

COME AND EXPERIENCE CREATIVITY



TERI INMAN / FIBER
BRISTOL YARNWORKS



ROBYN NICHOLS
SILVER & GOLD JEWELRY



UNDERBRUSH LTD. STUDIO
PHOTOGRAPHY & FLORALS



KATHY KILLIP
LEATHER BRACELETS



CATHY LEDEKER
WATERCOLORS & CARDS



ALSO FEATURING
BOB SEAGO / PHOTOGRAPHY
KEITH VICK / KNIVES
BILL CHAPPELL / BRONZES
MICHAEL SMITH / POTTERY



ROCKY WILSON
HANDMADE FURNITURE



719-658-0121
Summer Hours: 10am-4pm
Monday thru Saturday **NOW OPEN ON SATURDAY**
39542 HWY 149 (Mile marker 39.5)
Creede, Colorado 81130
Between Creede & Lake City
"Along the Silver Thread Scenic Byway"

The Studios Mission Statement

To allow both artists and visitors to learn through interactive, educational exchanges using the creative process to empower their expression of creativity.



KATHY BARNARD
ART GLASS



DARLENE DANKO
FIBER & HANDWOVENS



CRAIG TWITE
EMINENT CREATIONS



BRIELLE KILLIP
FLOUR SACK TOWELS



NANCY GREEN
JEWELRY



CAROL GARNAND
ECOPRINT SILK WEARABLES

CREEDE
REPERTORY
THEATRE

LEARN WITH US!

education

SUMMER DAY CAMPS

Come play and discover your inner artist through these exciting theatre-arts classes! Learning through theatre teaches students how to work together, problem solve, and use their imaginations.

ACTION STORYTIME

Ages 3-5 / June 17 & July 1 / 10am-12pm / \$40

In this annual offering for our youngest learners, students will have the opportunity to learn theatre fundamentals and problem-solving skills through movement, storytelling, and play. Every student will leave with a new book and delightful memories! We'll be featuring the books *A Tale of Two Beasts* on June 17 and *Unicorns Don't Love Rainbows* on July 1.

ADULT ACTING

Ages 16+ / June 6-9 / 5:30-8pm / \$100

Have you ever wondered what it takes to perform in front of a crowd? Whether you are a seasoned performer or reading a script for the very first time, our team of professional teaching artists will guide you through the process of overcoming stage fright and stepping into the spotlight!

MUSICAL THEATRE

Ages 12+ / June 20-23 / 10am-4pm / \$250

Learn what it takes to sing, dance, and act for Musical Theatre! Our professional team of teaching artists will guide students as they work to become triple threats in this fan-favorite offering!

MYSTERY CHARACTER CREATION

Ages 12+ / June 20-23 / 10am-4pm / \$250

What is a good mystery without an exciting cast of potential suspects? In this brand-new offering, students will have the opportunity to create their own character who may or may not have been involved in a mysterious disappearance. Will you be able to decipher whodunit?

FAIRYTALE THEATRICAL DESIGN

Ages 6-8 / June 13-16 / 10am-4pm / \$200

In this new and exciting offering, students will have the chance to design a well-known fairy tale from the ground up. Exploring the fundamentals of scenic, lighting, sound, and costume design, students will use their imaginations and creativity to create their own magical worlds!



CAMPS FILL UP QUICKLY!

Register today to reserve your spot. To register, visit creederep.org/education or give us a call at (719) 658-2540. To apply for financial assistance, please contact Education Director Brittnei Shambaugh Addison at brittnei@creederep.com

SOUTH FORK COLORADO

Basecamp For Adventure

Scenic Byway • Championship Golf
Abandoned Mining Towns • Shopping
Year-Round Outdoor Rec
affordable lodging • family-owned dining
Geologic Wonders • Countless 4x4 roads
Fishing on Gold Medal Waters



www.
SOUTH FORK.org

Events Calendar
Local Business Info
Activity Guides
Maps • History



/VisitSouthFork



Visitor Center

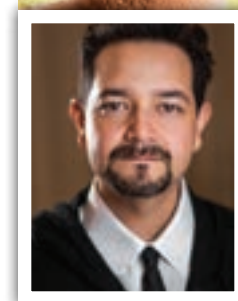
Located at Junction of Hwys 160 & 149
719-673-5512 • Open Mon-Fri 8am-5pm
• Vacation Guides, Area Maps & More
• Picnic Area / Public Restrooms



education



**CREEDE
REPERTORY
THEATRE**



Matt Zambrano

DIRECTOR'S NOTE

The story of the “town mouse and the country mouse” is a tale as old as time. There are versions of this story found throughout the writings of the ancient world, but perhaps the most well-known version of the story comes to us from the Greek Aesopica, or *Aesop's Fables*. Aesop, born in Greece sometime around 620 BCE, was a popular fabulist and storyteller of his time. It isn't exactly clear how many of what would become *Aesop's Fables* were his own creative inventions or how many were other popular stories of the time that he simply codified and put down on paper. What is clear is that his anthropomorphic parables, including *The Boy Who Cried Wolf*, *The Lion and the Mouse*, *The Tortoise and the Hare*, and *The Town Mouse and The Country Mouse*, are timeless stories that speak to the human condition and continue to thrill and delight audiences of all ages.

I believe this story, and our telling of it, will resonate strongly with the 40,000+ young people that will get to experience it on this year's tour. That longing for something bigger...the idea that the grass is always greener on the other side...is a feeling shared by many of us born on the plains and in the shadows of the Rocky Mountains. Who of us could forget the first time we saw the Golden Gate Bridge, Sears Tower, or Empire State Building?

The exciting thing for me in telling our story is not the antithesis of town and country, or English and Spanish, but rather what the Chicano poet Alfred Arteaga called the chiasma: *the point at which two opposing forces meet and intersect*. For it is only at this point that we can truly begin to understand, empathize, and appreciate one another.

CREATIVE TEAM

Director	Matt Zambrano
Book and Lyrics	Diana Grisanti
Composer and Music Director	Emiliano Messiez
Choreographer	Bethany Eilean Talley
Props Design	Amanda Relaford
Backdrop Design and Book Illustration	River Hetzel
Costume Design	Will Ward
Sound Design	Emiliano Messiez



Developed under CRT's Headwaters New Play Program.

SUPPORTED BY

- Dane G. Hansen Foundation
- Robert & Julia Johns
- Krueger Charitable Foundation
- National Endowment for the Arts
- The Melvin & Elaine Wolf Foundation

Literacy Empowers our Youth!

To support your community's literacy endeavors, each student receives a free original children's book after the show. These books reinforce the themes of the study guide and play, while making reading exciting!

40 YEARS, 400,000+ STUDENTS

Celebrating 40 years of bringing excellent bilingual musical theatre to schools across the Southwest and beyond!

Creede Rep's Young Audience Outreach Tour (YAOT) is one of the largest providers of educational theatre in the rural Southwest, serving over 31,000 children. YAOT's mission is to bring high-quality musical theatre to young audiences in rural and historically neglected communities by annually producing an original children's show that tours throughout CO, NM, UT, AZ, OK, and KS.

Creede Repertory Theatre's 58th season is made possible through the generous support of the following sponsors:

By donating \$100 or more, you can qualify for donor benefits ranging from free popcorn to our Red Carpet Pass.

TO OUR FAMILY: THANK YOU!

Our Creede Repertory Theatre family is an integral part of everything we do. We appreciate each of you who invests in our mission and vision to make this an artistic home to our rural community and beyond and a haven for artistic excellence, belonging, and intrinsic joy with your attendance, your encouragement, your time, and your resources. You are here for us, enabling us to be here for you.

THERE ARE MANY WAYS TO PARTNER WITH CREEDE REP!

ONE-TIME DONATIONS

One-time donations are always appreciated and may be made online, in person, or by mail.

MONTHLY GIVING

Your ongoing support through scheduled monthly contributions helps to support your theatre all year long.

IN-KIND DONATIONS

Do you have a used vehicle you are interested in donating? A local home, rental, or garage apartment being unused for part of the summer? There are many ways to support Creede Rep through in-kind donations, all of which are tax deductible.

MEMORIALS AND HONORARIUMS

Give in celebration of someone special, and they will be recognized in our season program!

MATCHING PROGRAMS

Maximize your gift by participating in your company's matching gift program or BE THE MATCH by donating toward our matching funds for our August Campaign or Colorado Gives Day.

SPONSORSHIP

Become a show sponsor or season sponsor! Creede Rep offers multiple sponsorship opportunities starting at \$500. Enjoy an exclusive preview performance, complimentary tickets, and discounted ad rates. What a great way for your business to reach 21,000 patrons and 8,000 households over the course of the summer!

ENDOWMENT

Help support the long-term fiscal health of Creede Repertory Theatre with your Endowment donation. For more information on Endowment giving options, see page 43.

PLANNED GIVING

Please consider investing in the future of Creede Rep by joining our Legacy Circle. Your planned gift will leave a lasting impact on Creede Repertory Theatre, inspiring future generations of students, actors, artists, and audiences.

VOLUNTEER

We love our volunteers! Volunteers earn free tickets as ushers, event helpers, and more. Sign up on our website or at the Box Office.

To partner with us, contact Development Director Lori Heinrich at (719) 658-2540 ext. 2006 or lori@creederep.com.



DONATE NOW!

SEASON SPONSOR



Creede Hotel & Restaurant

The Creede Hotel, originally Zang's Hotel, was built in 1892 and is situated on Creede's historic Main Street. We are proud to continue the 130-year-old tradition of food and service to the Creede community. Our newly remodeled kitchen features regional and international flavors, and our outdoor dining tent has a stage that is often programmed with live music. We are located next door to the Creede Repertory Theatre for convenient preshow dining.



Antlers Rio Grande Lodge & Riverside Restaurant

Bordering national forest on a secluded bend of the Rio Grande, Antlers is known for its premier trout fishing waters and offers a variety of lodging accommodations to the public. At the end of the day, enjoy fine dining and live music on the banks of the river at the Riverside Restaurant. Open Tuesday through Sunday for breakfast and dinner.

Rodgers + Hammerstein's *Cinderella*, *Clue: On Stage*, *The KID Show: Ask A Kid*



Broken Arrow Ranch & Land Company

A love for the outdoors and commitment to family and community defines brokers/owners Anne and Dale Pizel. They have been connecting people with their dreams for over 30 years. Dale and Anne know almost every corner of Creede, and they can't wait to share it with you!

Rodgers + Hammerstein's *Cinderella*

Jen Houston & Alan Busche

The Royale



Colorado Housing and Finance Authority

Colorado Housing and Finance Authority (CHFA) strengthens Colorado by investing in affordable housing and community development. Since 1974, CHFA's financing has assisted Coloradans living and working in all of Colorado's 64 counties. With relevant products and streamlined services, we can help Coloradans become homeowners, grow their businesses, or create and preserve affordable rental housing. CHFA also engages with communities to learn about unique needs, inform investment, and build capacity. Together, we work to realize our vision that everyone in Colorado will have the opportunity for housing stability and economic prosperity.

The Royale



Creede America Group

Creede America is a unique neighborhood that sits up on the mesa on the west side of the city of Creede. Great architecture, cutting-edge green technologies, and stunning views make Creede America the place to be in Creede.

The Royale



Dane G. Hansen Foundation

The Dane G. Hansen Foundation is committed to providing opportunities for the people of Northwest Kansas to enjoy the highest possible quality of life. Fulfillment of our mission is predicated on three specific goals: reverse the population decline, increase the economic opportunities, and strengthen critical community services.

Young Audience Outreach Tour



Del Norte Bank

As a mutual bank, Del Norte Bank's philosophy is to be TRUE to the community with an honest approach as a LOCAL financial institution providing necessary BANK products to individuals and businesses to facilitate community success. True, Local, Bank.

Rodgers + Hammerstein's *Cinderella*, *Mountain Octopus*



Dragonfly Flats

Dragonfly Flats is the newest luxury living accommodation on Creede's Main Street. This newly renovated Victorian masterpiece has four separate flats that can be rented separately or together. Relax on the porch swing, rockers, or by the bistro tables, enjoy the firepit in the backyard, or step out your front door to the center of the dining and arts district. It's the ultimate luxury vacation spot and walking distance to everything! Dogs welcome.

Clue: On Stage, Boomtown!



Genny Basler Memorial Fund

See page 43. *The KID Show: Ask A Kid*



Chuck & Kay Harbert and The Rio Grande Angler

Chuck and Kay have actively supported the theatre through the years, with Kay serving as a board member from 2002-2008. Long-time play sponsors and fundraisers, they believe that CRT is an integral part of the Creede experience.

Rodgers + Hammerstein's *Cinderella*

Paul & Jennifer Harrison

My family started attending CRT plays in the summer of 1977, which was our first year in Creede. My parents immediately fell in love with Creede and all it has to offer and soon purchased our summer home in the mountains. It has been passed on to me and my family, and we adore Creede just as much as my parents did. This will be my 46th season of attending productions at CRT, and I can't wait for this season to open.

The Royale

The Eleanor and Henry Hitchcock Charitable Foundation

The Eleanor and Henry Hitchcock Charitable Foundation is proud to support *The KID Show* for the 2023 season. Now in its 21st year, *The KID Show* is created and performed by local youth in collaboration with CRT professionals. *The KID Show: Ask A Kid*

Robert & Julia Johns

Mountain Octopus, *Young Audience Outreach Tour*

Marti & Steve Kiely

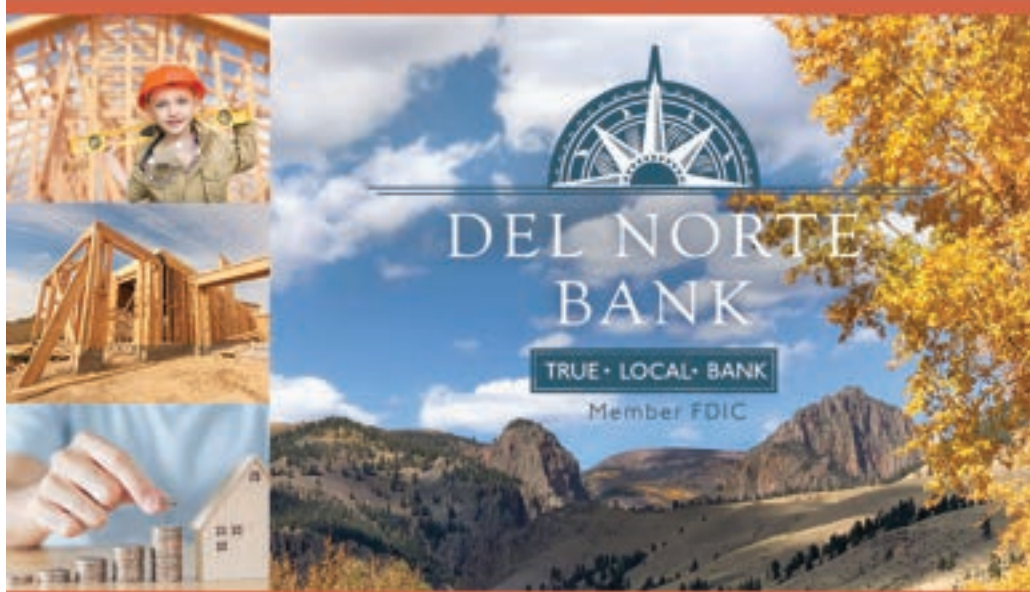
Grateful fans of CRT. *Mountain Octopus*



Kip's Grill

Kip's Grill, in Creede, Colorado, has been "Pleasin' The People" for 27 years! Kip's Grill serves up delicious Baja-style tacos, enchiladas, burgers, homemade sauces, and fresh margaritas. It is a go-to spot for locals and tourists. *Boomtown!*

Ready to build your dream home?



Let our dedicated licensed professionals assist you with a CONSTRUCTION LOAN. Our personal service and attention to detail will make this a smooth process. Once construction is complete, our Mortgage Division can assist with permanent financing.

VA Loans • USDA Loans • Conventional Loans • First Time Home Buyer

705 Grand Ave Del Norte 719.657.3376 | 106 S Main St Creede 719.658.0126 | Loan Production Office 817 Main St., Alamosa 719.657.4553 | Member FDIC | www.truelocalbank.com

Serving Creede since 1892

TOMKINS

HARDWARE AND LUMBER

We have everything you need to build but the Land!

127 NORTH MAIN ST
CREEDE, CO
719-658-2240

True Value

MAC & CHEESE THE WAY YOU WANT IT!

The Mac Mine

\$2 OFF!

PURCHASE OF \$10 OR MORE

Home of Creede's ORIGINAL Fried Pies!

111 WALL ST, CREEDE • 719-580-9959
Limit one coupon per purchase. Code: CRT

Krueger Charitable Foundation

The Krueger Charitable Foundation's commitment has been instrumental in supporting the literacy component of CRT's Young Audience Outreach Tour. Their gift makes it possible for CRT to give a children's book to each of our young audience members after every tour performance. We hand out close to 25,000 books each year because of the Krueger Charitable Foundation's generous support.

Young Audience Outreach Tour

Peggy Longwood Lamb

Peggy Longwood Lamb has been a part of the Creede community since 1939 when her parents bought their cabin at Spar City. She has witnessed this historic venue's transformation from a movie house to its present use as the home of the Creede Repertory Theatre. Desiring to secure the financial stability of CRT, Ralph and Peggy Lamb established the Ralph & Peggy Lamb Endowment Fund in 1994, paving the way for the creation of the CRT Endowment. The leadership and vision of Ralph and Peggy will forever provide a rich cultural legacy for Creede and its community of visitors.

Rodgers + Hammerstein's *Cinderella*

Courtney & Michele LaZier

Boomtown!

Lindsey & Pete Leavell

Proud sponsors of Headwaters since 2012!
Headwaters New Play Festival



John David Lentz Memorial Fund

See page 43.
Clue: On Stage



The Mac Mine

Mac and Cheese the way you want in Creede, CO.
Headwaters New Play Festival

The McShane & Sloan Families

The KID Show: *Ask A Kid*



The Monte Vista Cooperative

The Monte Vista Coop is owned and operated by members of the San Luis Valley, serving the essential needs of our members, with all profits going back into the communities. With a large pallet of agriculture products and services available, the Monte Vista Coop can be a useful tool to help you improve the profitability of your operation. We are passionately committed to providing our customers with the highest quality products, most innovative solutions, and services delivered with integrity and professionalism.

Mountain Octopus



National Endowment for the Arts

Young Audience Outreach Tour

Karen & Charles Nearburg

Clue: On Stage



Oleo Ranch

Colorado vacation cabins offer luxury, off-the-grid accommodations, completely surrounded by national forest and wilderness area. The seven cabins range from two to four bedrooms. Hiking, private fishing, horseback riding. Stables available for guests. Along the Silver Thread Byway toward Lake City, approximately 35 miles from Creede.

Clue: On Stage, Boomtown!



Quiller Gallery

The Quiller Gallery has had a partnership in the arts with Creede Repertory Theatre since 1970. We applaud CRT for the enrichment of thousands of children's lives in the past 56 years.

The KID Show: *Ask A Kid*



San Juan Sports

Open since 1974, San Juan Sports provides for all your outdoor adventuring needs. As proud distributors of

the finest outdoor products, San Juan Sports offers outdoor sporting equipment, apparel, and shoes. Also, check out our tee-shirt shop, San Juan Sports T-Shirt Company (next to the Kentucky Belle Market), and have a beverage with us at Sunnyside Bar! Don't forget to join our mailing list at www.sanjuansports.com. As always—adventure on, friends, but before you go out...come in!

Boomtown!



San Luis Valley Federal Bank

Since 1899 we've been serving the banking needs of our members. We're happy to share some of our success with our community and proud to support the amazing work of CRT.

Clue: On Stage



SLVREC & Ciello

SLVREC and Ciello: A powerful connection. We are proud to support CRT and applaud the theatre for its commitment to the arts and its patrons. CRT is a pillar in the Creede community.

Rodgers + Hammerstein's *Cinderella*

The Slater Family

Ken Ludwig's *Dear Jack, Dear Louise*



Tomkins Hardware and Lumber

Tomkins Hardware and Lumber has been located on Main Street since 1892. Under new ownership since 2019, we carry everything that contractors and homeowners need for projects large and small, and our professional staff is always ready to advise and help you tackle any project.

The Royale

our sponsors



Tucker-McDermott Foundation

Stan and Michael Tucker-McDermott started the Tucker-McDermott Foundation to benefit education and the arts in Del Norte and Creede. It's an honor to support CRT and the amazing impact the theatre has on this community. Ken Ludwig's *Dear Jack, Dear Louise*

Ussery Enterprises Inc.

Creede Repertory Theatre offers huge thanks to Pat Ussery and Ussery Enterprises Inc., who constructed the beautiful new outdoor balcony on our Mainstage Theatre!
Boomtown!



Vacation Rental Collective, The Creede Collection

The Creede Collection is a highly personalized vacation-rental management company. Locally owned and managed by a fourth-generation Creede family, we take pride in managing and renting properties in Creede and the surrounding areas. We unite owners and travelers in finding the perfect Vrbo- and AirBnB-style private lodging accommodations in one of the best vacation destinations in the West: the San Juan Mountains and the Rio Grande Valley! Visit us online at bookvrc.com. We look forward to hosting you! —Mary Beth Miles, Sean Bannon & Amanda Miles

Clue: On Stage

Valley Courier The Valley Courier

Valley Courier publisher Keith R. Cerny, a CRT board member, and his wife, Debra Sowards-Cerny, are regular supporters of the theatre because of the economic impact CRT has on the entire San Luis Valley. We invite you to keep up on the news of the San Luis Valley at www.alamosanews.com and follow us on Facebook. *The Valley Courier* salutes the staff and crew of CRT and looks forward to another outstanding theatre season.
The Royale



The Melvin & Elaine Wolf Foundation

We wish you the best season possible. May your art bring light where there is none, smiles where there was unhappiness, and joy to the hearts of children. In the words of the Bard through *Hamlet*, "Let your own discretion be your tutor: suit the action to the word, the word to the action."
Young Audience Outreach Tour

A Celebration of JOHN GARY BROWN

a celebration

John Gary Brown, affectionately known as Brownie, has been the Creede Repertory Theatre company photographer for nearly 50 years. Since he is often behind the scenes (and camera), we wanted to celebrate his many years of service with some photos of the man himself, as well as some insight into his history, favorite shows, and creative brain.



The Boyfriend (1974) - Christy Brandt, Mandy Patinkin, Wes Payne, Steve Scott



Brownie and Christy in *Destry Rides Again* (1999)



Brownie and Christy in 1982



Unnecessary Farce (2011)



A Doll's House (1981)



Brownie with one of his paintings. Photo by Christy Brandt

When and how did you start taking photos for Creede Rep?

I began documenting shows in 1974. Having followed my true love, Christy Brandt, into the world of theatre, I decided to make myself useful by photographing the shows with tungsten film, which eliminated the orange tint that previous production pictures had always had. My first subject was *The Boyfriend*, and I was happy to document Christy's role as a giddy flapper, who sang and danced opposite Mandy Patinkin, who at the time was just another actor. I did other work as a volunteer, such as painting sets, acting, and helping with strikes. At the end of the season I was paid \$50.

Are there some you still think about?

Outstanding productions I loved: *The House of Blue Leaves* (1975); and later shows like *Two For the Seesaw*, *Private Lives*, *A Doll's House*, *Crimes of the Heart*, *Once Upon a Mattress*, *Noises Off* (both productions in 1988 & 2005); *And a Nightingale Sang*, *Feed My Sheep*, *Moon Over Buffalo*, *Three Viewings*, *The Cripple of Inishmaan*, *Shirley Valentine*, *The Billy Trilogy*, *Sweeney Todd*, *Cowboly*, *Urinetown*, *Drood*, *Kimberly Akimbo*, *The 39 Steps*, *Unnecessary Farce*, *The Road to Mecca*, *Hope and Gravity*, *Annie Get Your Gun*, *Guys and Dolls*, *August: Osage County*, *The History Room*, *Talley's Folly*, *Sherwood*, and *Ripcord*.

Some people may not know that you are also a prolific painter. How does your painting complement or challenge your photography?

I have a master's degree in fine arts from The University of Washington, and selling paintings for six decades has been my primary source of income, but I have enjoyed my photography career just as much, especially my work in theatre. Although CRT has been my main gig, I have also worked for theatres in Illinois; Hilton Head, South Carolina; Kansas; and Missouri. Although the processes are very different, I think both require a sense of visual composition and a willingness to take risks, so as to go beyond the ordinary in either medium. I have tried to document the theatre experience, by recording the artistry of others, so I think my paintings are a bit more personal, but there are also a lot of unexpected moments in theatre, and it pays to anticipate them.

See Brownie's photography featured in our 2nd Floor Lobby display: 49 Seasons of John Gary Brown.

What's something not everyone knows about you?

I feel like my work at CRT has been seen for so long that I don't have many secrets in that area. My first artistic impulses were musical, and I dreamed of being a concert pianist: in high school, I played Rachmaninoff's preludes just as they were written. The visual arts offered me more freedom to experiment in various endeavors, whereas serious pianists were required to work long hours every day. Some people may not know that I have photographed cemeteries all over the world, and The University of Kansas Press published a book of my cemetery photos, titled *Soul in the Stone*. I am also famous, or infamous, for my portraits of beautiful women.

"I have tried to document the theatre experience, by recording the artistry of others..."—John Gary Brown



Photo by Ramsay de Give

YOU'RE INVITED

John Gary Brown Celebration

September 9 | 7pm | Ruth Humphreys Brown Theatre
Food, beverage, a slideshow, and more!



Photo by Brooke Ashlee Photography (2022)

CITY OF CREEDE

A COLORADO TOWN

AUTHENTIC.

HERITAGE.

HOME.

VISIT TOWN HALL

2223 N. MAIN
CREEDE, CO 81130

719-658-2276

WWW.CREEDETOWNHALL.COM

Loving & Serving
God & Creede Since 1894

Creede Community Church, UCC
4th & Main St.

Worship on Sundays:
11am: with choir & Sunday School
9am: mid-June to mid-Aug

for details visit:
www.creedecommunitychurch.org

ENDOWMENT

We can enhance our quality and expand our programs by building and maintaining an Endowment that provides funding in perpetuity for CRT. These forward-thinking friends have given to CRT's Endowment in 2022, supporting all fundamental aspects of the CRT experience. *If you are interested in contributing toward CRT's Endowment fund and building a sustainable future for the theatre, contact the Development Office at (719) 658-2540 ext. 2006.*

Maegan & Jonathan Allsup
David Basler
Tom Basler
The Family of T. Jefferson Carey
Patrick & Beverly Dooley
Jean Egdorf
Deborah Harrison
Alice & Melvin Hawk
Ron & Mary Sue Lentz Johnson
Beth Kander

Bob Knous
Gary Kring
Margaret A. "Peggy" Longwood Lamb
Caroline Lentz
Stan & Julie Lentz
Jeremy & Emily McComas
Sharon & Robert Seago
Deborah S. Singer
William & Teri Smith

RALPH AND PEGGY LAMB ENDOWMENT FUND

Desiring to secure the financial stability of CRT, Ralph and Peggy Lamb established the Ralph & Peggy Lamb Endowment Fund in 1993, paving the way for the creation of CRT's Endowment. The leadership and vision of Ralph and Peggy will forever provide a rich cultural legacy for Creede and its community of visitors. Peggy Longwood Lamb contributes to the Endowment Fund annually and also generously supports CRT through a play sponsorship.



John David Lentz
Memorial Endowment Fund

John David Lentz was a much-beloved company member at Creede Repertory Theatre in 1992. After completing his MFA requirements at the University of San Diego on April 29, 1994, John was killed in a random shooting on May 1, 1994. The John David Lentz Memorial Endowment Fund was created to honor his memory. This summer the John David Lentz Memorial Fund sponsors *Clue: On Stage*.



Genny Basler
MEMORIAL FUND
1939-2017

The Genny Basler Memorial Fund was founded in memory of Genny Basler, a longtime Creede resident and lover of Creede Repertory Theatre. Genny saw her first show at Creede Repertory Theatre in 1993, the summer after her nephew John David Lentz was a member of the CRT company, and from the moment the lights went up, she was hooked. Her presence was always felt at CRT as a regular volunteer, patron, and friend, and she was beloved by all. On June 19, 2017, a car accident took Genny's life, and her presence in the CRT audience will be forever missed. The Genny Basler Memorial Fund sponsors this season's The KID Show: *Ask A Kid*.



T. JEFFERSON CAREY
MEMORIAL FUND &
PLAYWRITING AWARD

Honoring the legacy of Jeff Carey—playwright, longtime CRT company member, and extraordinary person—this award is to underwrite CRT's investment in new work through support of a select playwright whose style, inspiration, and passion originate from that place of no comparison. *For this year's award recipient, see page 31.*



Brooke Ashlee
PHOTOGRAPHY

BrookeAshleePhotography.com

BrookeAshleePhotography@gmail.com

Families
Weddings
Newborns
Portraits

For more information
CreedeMusicalArtsCollective.org

16-18 JUNE	FATHER'S DAY Grace Brinning, Harp Benjamin Krug, Cello Patricia Zuber, Flute Katherine Herby, Soprano	
13 JULY	A CELEBRATION OF RODGERS & HAMMERSTEIN Ted Chapp The artists of CRT & CMAC	
21-23 JULY	FLAMENCO & FOLK Sonia Otero & Inés Fernández Bolsa de Paq	
1-3 SEPT	LABOR DAY WEEKEND NUEVO TANGO AND MORE Graciela Chassara Navarro Verónica TSA	

Creede Repertory Theatre logo

Creede Musical Arts Collective logo

CreedeMAC

129 N. Main Street
719-658-0368

Come in and wander around!

**WANDER
OFF BROADWAY**

Gifts, Clothing & Local Artisans

inge studios
Rare Things, too

Creede
Quiller Gallery
Taos
Harwood Museum of Art
La Tierra Mineral Gallery
Millicent Rogers Museum

www.rarethingsgallery.com

Dave Montgomery
Celebrating Nature Through the Magic of Painting
Oil Paintings • Prints • Cards

inge studios
Rare Things, too
128 N. Main St., Creede

CREEDE REP'S GENEROUS DONORS

donors

Gifts to Creede Repertory Theatre from January 1 - December 31, 2022.

SEASON SPONSORS

\$50,000+

Anonymous
Cheryl Burnet Estate
Creede Hotel
& Restaurant
Dane G. Hansen
Foundation

PRODUCERS

\$25,000—49,999

The Hogle Foundation
Krueger Charitable Foundation
Shubert Foundation
Kent Strickland

DIRECTORS

\$10,000—24,999

Anonymous
Antlers Rio Grande Lodge, Inc.
Clarence V. Laguardia Foundation
Colorado Creative Industries
Del Norte Bank
Stanley V. Graff
Robert & Julia Johns
Margaret "Peggy"
Longwood Lamb
Kay & Charles Lancaster
Pete & Lindsey Leavell
Mineral County Lodging Tax
Tourism Fund Panel
Gary Mitchell
National Endowment for the Arts
Karen & Charles Nearburg
Carolyn Lamb & Steve Reed
Robert Hoag Rawlings
Foundation
Ruth H. Brown Foundation
The Schramm Foundation
Robert Slater

DESIGNERS

\$5,000—9,999

Anonymous
Tom Basler
City of Creede / Virginia
Christensen Trust Fund
David Cohen Charitable Fund
Michael & Shelly Dee
Jerry & Karyn DeVault
Kay & Chuck Harbert
Sally & Forrest Hogle

Eli & Gigot Hudspeth
Jim & Diane Knutzon
Outcalt Foundation
Quiller Gallery LLC
Ramble House & Creede Guide
& Outfitters
Joseph Roach
Sheila Fortune Foundation
Rita & Roger Shenkel

CHOREOGRAPHERS

\$2,500—4,999

1st Southwest Bank
4UR Ranch
Charlene & George Ameal
Susan Andrews
Boettcher Foundation
Broken Arrow Ranch
& Land Company
Jennifer Houston & Alan Busche
Susan S. Chapman
CO Housing & Finance Authority
Ann & Tim Cranor
Creede America Group, LLC
Stacey & Reed Dillon
Libby & Rusty Goff
Paul & Jennifer Harrison
Terre & Polly Jones
Stephen & Martha Kiely
Gary & Jodee Kring
Carol Krueger
Rod Limke
Jan Crawford & Jim Loud
Keith Maxwell
Nimmer Family Charitable Fund
Oleo Ranch
Anne & Van Oliver
Joyce & David Robinson
San Luis Valley Federal Bank
Santa Fe Community Foundation
Tom & Michele Schrandt
Sharon & Robert Seago
Rick & Diane Sloan
Alan Echeverria & Dyan Sublett
Tomkins Hardware & Lumber
Vacation Rental Collective,
The Creede Collection, LLC
Valley Courier

STAGE MANAGERS

\$1,00—\$2,499

Anonymous
Cat & Avery Augur
Jessica Baron
Amanda & David Basler
Benevity, Inc.
Bieber Family Foundation
Judith Blanch
John Gary Brown & Christy
Brandt
Frances & Todd Bratton
Katherine Brennand & Chris

Cummings
Sally Mason & Derrell Capes
Jim & Karen Carns
James & Jean Carson
Compton Family Fund
Reba Copeland
Chris Corcoran
David Creasey
Paul & J'ne Day-Lucore
Melody Dean
Ellen & Ray Deaver

The Denver Foundation
Colleen & Mark DeSanto
Paula & Steve DiAntonio
Charlotte & Kirk Dooley
Dragonfly Flats
Don & Leslie Dustin
Neal R. Fenter
Jenna Ford Yund
Amy Jackson & Tom Fowlston
John France
Amy Getz
Ernest & Debra Gomez
Vanessa Griffith
Steve Hall
Trisha Hayes
Lindsey & Chris Hervey
Dale & Beverly Hettinger
Tom & May Claire Hetzel
Dorothy & Jerry Hominick
Bob & Judy Homsher
Humphreys Ranch
Ed & Paige Innerarity
Joan Green Jeffrey
Harold & Kay Kelloff
Dr. James & Christine Mercer
Kraft
Dave Krueger
Ladies Aid Society
The Mac Mine
Lynn & Shirley Ann McCullough
Stan Tucker & Mike McDermott
Jerry & Suzi McKee
Mineral County
Monte Vista Cooperative
Gary & Beverly Moore
Julie Kushner & Larry Morgan
David Norcom
Mary Lee Pinkerton
Lanette & Michael Quint
Julia & Ross Rathgeber
Rio Grande Club & Resort
Paula & Charles Risinger
Kristy Robinson
John Rochester
Lynn Russell
Ashley & Drew Rust
Kent Schlundt
Cam Smith
Sally Smith
Beach & Lee Ann Snyder
William Spicer
Texas Instruments Foundation
Kym & Mickey Thompson
Tucker-McDermott Foundation
UBS Matching Gifts Program

Karla & Steve VanTreese
Chris Van Winkle
Jennifer Wilson
Jana Wilson
Daniel P Wolkowitz
Dean Yannias
Valinda & Steve Yarberr
Ron & Sandra Yates

LEADING ROLES

\$500—\$999

Al Biernat's
Anonymous
Jaime & Jeff Bailey
Paul Barnes
John & Alice Berry
Kerri Bohan
Sandy & Jim Brady
Annie Faith Butler
Keith & Debbie Cerny
Mark & Lynn Chambers
Camille Coates
Cynthia Costanza
Mary Cottrell
John & Catherine Cranor
Bill & Cecilia Dail
Zora Dash
Rudy & Andie Davison
Doug Davlin
Marci & Greg Eubanks
Joyce & Tom Faris
Shane & Prisila Foss
Robert Foster
Bradford Goodwin
Stephen & Diane Griffin
Steffanie Grogan
Fred & Carol Grover
Joe Hampton
James & Mary Anne Haney
Carl & JoAnn Hill
Angela Hintz
Michael & Crystal Hudson
John & Jan Ison
Carol & Charles Jones
Rachel Kelmenson
Lindsay Klump
Amy Krueger
Courtney La Zier
Sherri & David Lachance
Maurice LaMee
Sheldon Ledbetter
John Loftis
Dana Mann
Jamie & Fred McLeroy
Paula & Jeffrey Menten
Clifton Meyer
Sue Armijo & Roger Miller
Mountain Skillz
George Muncrief
Jane & Richard Nearing
Network for Good
Dot & Hal Olson
Rocky Powell
Lori & Shawn Reed


"Your Hometown Market"
For All Your Grocery Needs



KENTUCKY BELLE MARKET

Main Street, Creede / 719-658-2526
kentuckybellemarket.com


CREEDE ELKS LODGE #506
A PROUD CREEDE TRADITION SINCE JUNE 22ND, 1899



CREEDE ELKS SPONSOR
DRUG AWARENESS PROGRAMS IN THE SCHOOLS
AWARD SCHOLARSHIPS TO ALL CHS GRADUATES SEEKING HIGHER EDUCATION

"AS LONG AS THERE ARE VETERANS, ELKS WILL NEVER FORGET."

CREEDE ELKS MAINTAIN
THE CREEDE MEMORIAL PARK
CONDUCT COMMUNITY VETERANS AND MEMORIAL DAY SERVICES



ELKS USA LODGE EVERY 2ND AND 4TH TUESDAY AT 7PM
BINGO EVERY MONDAY AT 7PM JUNE-AUGUST

One link in the chain of 2,000+ Elks Lodges nationwide.
Newly renovated building available for special events.

For More Info, Contact RAYDELLENBAUGH@HOTMAIL.COM

Ooh La Spa AND BOUTIQUE

FULL RETAIL BOUTIQUE
CBD Products
Largest selection of Federally legal, Hemp derived products in the SLV: CBD, CBN, CBG & MUCH MORE...

SPA SERVICES
HAIR SALON

NEW LOCATION
108 S Main St, Creede

OPEN ALL YEAR • GIFT CERTIFICATES
oohlaspacreede.com • 719-658-3070

719-658-2480 117 E 7th St, Creede



DOWNSTREAM GAS & MERCANTILE

CREEDE flags apparel books gifts Fuel and supplies for your next Creede adventure!




Cynthia & Stuart Rider
Spafford Robbins
Barbara Roughton
Ward & Mary Cay Russell
David Shaw
Rick Hasbrouck & Kaye Shedlock
Tom & Karen Slade
Carl Smith
Robert Spangler
Barbara Kline Taylor
Fred Tucker
Pamela Tumler
Emily Van Fleet
Carol & Virgil Wagner
Aaron Webber
Ward & Loree Weisman
Todd Abott Winters
Wolf Creek Ski Area

SUPPORTING ROLES

\$100—\$499
Abbey Lane Gallery
Ruth Acheson
Jennifer Aldag
Michael Horton & Sandra Allen
Maegan & Jonathan D. Allsup
AmazonSmile
Ilene Americus
Anonymous
Jody Anschutz
Beth L. Arnold
Ilze Aviks
Lee Ann Bakros
Subra Balan
Emma & Michael Baldisserotto
Joel & Pat Barker
Sybil Barnes
Steve Beckham
PJ Bergin
Kate Berry
Margaret Biles
Susan Birdsey
Anne & John Blair
William Blalock
Kate Blount
Elaine Blumenhein
Boneyard Studio
Linda Bowen
Carla Branda
Henry Brandt
Laura & Mark Brandt
Valerie & William Brownrigg
Vicki Brownrigg
Cindy & David Bruner
David & Glenda Buhrmann
John & Boone Bullington
Will Burt
Duane Bussey
Harlan & Robin Butt
Cafe Ole
Candie's Firehouse
C. Douglas & Ruth Ann Carey
Sharon Claiborn
David Cohen
Jennifer Cole
Kahane Cooperman
Glyndal & Kathy Cowan
Margaret Cowan
Creede Olive Oil Company
Jan Crider
Susan & Carrol Cross
Spencer Cubage
Kit & Ariel Davlin
Anne Flammang & Scott Deshong
Elisabeth DesMarais

Judy & Gerry Dettloff
Daniel & Steph DiAntonio
Donna DiAntonio
John & Caitlin Wise DiAntonio
Richard DiAntonio
David Disheroon
Patrick & Beverly Dooley
Midora DuBose
Lizabeth Duckworth
Christopher Durall
Frances Echeverria
Michael Edwards
Susan Ehrgood
Barbara Elliott
Thad & Deanne Elliott
Earl Ellisor
Mary Lynn Ernstthal
Bill & Tami Fassett
Cheryll Faust
Hawk Ferenczy
Brandon Fimple
Terri Finley
Mary Fletcher
Rhonda Foale
Vickie Ford
Susie & Paul Franke
Michael Freed
Freemon's Guest Ranch & General Store
Charles Freuden
Michael & Julia Garratt
Marji Gavett
K.R. & Sherri George
Larry & Roz Gibel
Tracey Gilbert
Connie Murrelle
Sally Grammer
Frances Haberman
Kim Haller
Darrell & Jean Hamilton
Douglas Hammett-Lair
Richard & Karen Hanneman
Jacob Harbor
Cindy (Margaret) Harris
Alice & Melvin Hawk
Terri & Robert Helm
Wyatt & Karen Henderson
Amy Henkel
Mary Henson
Greg Hewgley
Justin Hill
Stephen Hill
Allen Hintz
Steve Scott & Ted Hoerl
John & Gloria Hood
Bridget Houston Hyde
Steve, Heather, & Birdie Hughes
David & Lynn Hurst
David & Lisa Hutson
Greg & Patty Ingham
Richard Inman
Carole Seabrook & Jobie Irvine
Janis G. Jacobs
Gary & Joyce Johnson
Pam Johnson
Elfriede Jopp
Judith Judkins
Gregg & Kristine Kampf
Joe & Melanie Kelloff
Preston & Renee Knight
Robert & Cynthia Koets
Kerry Kraybill
Tim & Susan Kroes
Catherine Lease
Molly Lee
Rebecca Lennahan
Christy Lentz
Stan & Julie Lentz
Little Elaine Photography

Gail & Bill Longfellow
Ronald E. Loser
Patricia Lovelady
Barb & Don MacDonald
Jean Mackenzie
Glen MacPherson
Michael Manfredi
Mara Manus
Heidi Markley
Larry Martin
Tita Louise Martinez
Carolyn & Gary Martyn
Cecelia Matson
Robert & Melanie Matthews
Kent Maughan
Roberta McAllister
Steve & Barbara McCarl
John F. & Susan J. McClure
Susan McCrea
Marilyn McCullough
Paul McCumber
Connie McDaniel
Cheryl McEachran
Cheryl McFarren
Frank Fransioli & Eileen McGinnity
William & Marlys Meagher
Thomas Meyer
Elizabeth Burke Millner
Jim Mitchell
Estella Montoya
James Moberley & Laura Moore
Christina Moss
Mountain Pizza & Taproom
John & Janet Mulay
Patrick Murphy
Connie Murrelle
Dave & Zoe Myers
Melissa Nease
Kim Nelson
David & Molly Niven
Peter Norton
Thomas Nunnally
Rita Odum
Ooh La Spa & Boutique
Catherine & Richard Ormsby
Stephanie Ouren
Jeff & Hallie Owsley
Barbara Palmer
Wes Payne
Jeanne & Gerald Pees
Al & Carol Perlman
Virginia Petersen
Ann & Skip Phebus
Margaret Phillips
Melanie Kai Phoenix
Pikes Peak United Way
Carol Ann Pinto
Melanie Pittner
Anne Pizel
Robert Pope
Renee Prince
Kelly Pulliam
Stephen & Marta Quiller
Jeremy W. Rabe
Jessica & Ryan Rabe
Rainbow Lodge & Grocery
Ramon's Mexican Restaurant
John & Jan Ramsay
Rare Things
Caryn Relkin
Linnaea Renz
Revolution Rail Co.
Judith Reynolds
Steve Reynolds
John & Anita Rhodes
Damian & Michelle Richardson
Denise & Steve Riegel
Rocky Mountain Ski & Raft
Alice Royalty

donors

Pesha Rudnick Wright
Elise & Neil Rudolph
Jonathan Ruggiero
Courtney Rulon
San Juan Sports
Matt Schlieff
Jan Schmidt
Chris & Billi Dawn Schoggen
Paul Schulte
Kent Sellers
Janice Sheffel
Marty Siemion
Deborah S. "Dev" Singer
Barb Smith
Carol Smith
William Dean Smith
Deborah Sorensen
Gayla Sorenson
South Fork Lodging LLC
South Fork Lumber
Sarah Lentz Spellman
H. K. Stahlendorf
Abe J. Taylor
Margaret Taylor
Sandy Taylor
Kimberley Temple
The Blue Yak Salon & Boutique
The Springs Resort & Spa
The Studios at Bristol
Sean Thompson
Barrie Thomson
Richard & Leane Thornberry
Barbara Tidd
Charles Tidd
Sandra Tonso
Kim & Yen Touysinthiphonexay
Twin Pine Motor Sports, Inc.
Two Rivers BBQ
Kim Hargraves Tyrrell
& Todd Tyrrell
Nanci Van Fleet
James & Jenny Van Ry
Courtney Van Winkle
Phyllis Vandelaar
Mike & Meghan Vucetic
Jane & David Waldie
Melissa Walker
Sarah Wallace
Wander Off Broadway
Steve & Jane Wardlaw
Morton & Cecelia Weir
Becky Welsh
Beverlee Westmacott
Wild Beaver Mountain Man
Emporium
Dawn Williams
Willow Mountain Limited
William Stonaker & Patricia Wilson
Fred & Shelly Winston
Jane Wise
Joan Wofford
Joseph & Linda Woodford
Patrick Woods
Richard Worm
Ronnie & Anita Wright
Erin Yurkinas

Understudies
\$1—\$99
More than 547 donors gave a total of \$11,945. Thank you!



We Clean 'Em Rite
Let us do the dirty work

18 Years of Professional Cleaning Experience
Full-Service Deep Cleans, Monthly Cleaning & Windows

SERVING CREEDE, MINERAL COUNTY & THE SLV (720) 587-9650
1wecleanemrite@gmail.com @creedecleanemrite

FINE ART ORIGINALS

WATERS
gallery

CUSTOM FRAMING

CREEDE, COLORADO
719 • 588 • 8484

cherewaters@hotmail.com



SUSAN MADRID
MASTER STYLIST
MASTER COLORIST

719-658-2500
THEBLUEYAKSALON@GMAIL.COM

CREEDE, CO



BRISTOL HEAD BAKERY
DESSERTS YOU DESERVE

CROISSANTS CINNAMON ROLLS COOKIES
BRIOCHE STICKY BUNS PIES
BREAKFAST PASTRIES CAKES

AND MORE BY CHEF BRANDON FIMPLE

600 S. MAIN, CREEDE 918-944-0282
NEXT TO BIG DOUG'S BBQ



RAMBLE HOUSE

T-Shirts - Hats Fishing Licenses - Tackle
Gifts - Souvenirs Lures - Flies - Rods
Sporting Goods Reels - Information

FISHING THE RIO GRANDE SINCE 1956
116 N Main St. Creede, CO (719) 658-2482
www.CreedeFlyFishing.com



Creede Guide & Outfitters

Guided fly fishing trips tailored to you!

(719) 658-2482
CreedeFlyFishing.com



Cary Bush

LEGACY CIRCLE

Members of CRT's Legacy Circle include those individuals who have made a commitment to the future of the theatre through an estate gift.

George & Charlene Ameel
Elise Backinger & Kent Strickland
Chuck Barnes
David Basler & Amanda Keen Basler
Phil & Jean Bethke
Katherine Brennand
Cheryl Burnet
Cody Cosmic
Alan Echeverria & Dyan Sublett
Melvin & Camille Getz
Dr. Jessie Gilmer
Keith & Becki Helmstetler
Lynna Jackson
Rhonda Jantzen
Dr. Merl & Kathy Jennings
Phil & Teresa Lack
Drs. Ed & Minnie Lee Lancaster

Stan & Julie Lentz
Candice Tatum Lindh
Maurice LaMee & Trary Maddalone
Gary Mitchell
BJ Myers & William Kublke
Randy Nicholson & Cary Bush
Richard & Catherine Ormsby
Mary Lee Pinkerton
Michael & Lanette Quint
Barbara Roughton
Bob & Dixie Slater
Rick & Diane Sloan
William & Teri Smith
Kim Hargraves & Todd Tyrrell
Don & Ruth Ulm
Peggy Pharr Wilson & Tristan Wilson
Ed & Betty Wheatley

For more information on joining our Legacy Circle, please contact Lori Heinrich, Development Director, at lori@crederep.com, 719-658-2540 ext. 2006.



Christina Egolf (right) with daughter Adrian

THE CHRISTINA AWARD

In honor and memory of superfan Christina Egolf, each year CRT recognizes and celebrates our most ardent and loyal patrons who went above and beyond in the areas of show attendance, volunteerism, charitable giving, and more. We will recognize these amazing people before the 7pm performance of Rodgers + Hammerstein's *Cinderella* on Saturday, August 5.

For their support of CRT during the 2022 Season, this year's recipients are:

Lori Dooley
Gary Kring
Joyce Robinson

NOTICE!

To the theatre-going public,

CHOCOLATE

will be available in Creede, Colorado starting in 2024.

We will be offering hand-crafted specialty chocolates. Four finely curated chocolates will be boxed for sale. Purchases are delivered to you by an exclusive bicycle service.

A discount is offered to CRT ticket holders.

Quantities are limited. Advanced, on-line purchases only. No "day-of" sales.

@ Intermezzo Chocolatier

www.AtIntermezzo.com

MEMORIALS AND HONORARIUMS

donors

in honor of

Ruth Barn Kate Berry	Dr. DawnElla Rust Jennifer Dettloff Sarah Weed	John & Caitlin DiAntonio and all the amazing people involved in CRT	Daniel & Steph DiAntonio	Corinne & Tom Peters Ron Rinkle	Susan McCrea Dr. Leo Bruederle
Kate Berry & Family Betty & John Brandt	Judy & Gerry Dettloff John Gary Brown & Christy Brandt	John Egldorf Sharon Fabriz Don & Carolyn Flood	Zora Dash Patricia Eagle Chelsey Boaldin	Irene Rynearson Carli Skulborstad	Mr. Richard Rynearson Amy & Sam Ogden
Christy Brandt	Michael Freed John & Gloria Hood	Frances & Bea Halle Francis Margaret Garcia /Mo	Linnaea Renz Beach & Lee Ann Snyder Ron Garcia	Rick & Diane Sloan Sally Ward Smith Beth Stamper	David & Molly Niven Colleen A'Hearn Bill & Jean Potabi
Christy Brandt & John Gary Brown	Evie & Michael Rapport Cindy & David Bruner	Nick Garcia Our "Grands" and their love of all things CRT	Kricket Moorman Beach & Lee Ann Snyder	Paige Swanson	C. Douglas & Ruth Ann Carey Christina Moss
Annie Bruner Anne Butler Birdie Contello The Costume Shop	Gary & Beverly Moore Sarah Wallace Michael Horton & Sandra Allen	Lori Heinrich River Hetzel Cynthia Hughes Thomas Hynes	Paula & Charles Risinger Tom & May Claire Hetzel Brenda Cunningham Mr. David Hynes	Sean Thompson In honor of all of the joy you have brought to my life and thanks for introducing me to Creede Rep. Much Love, STL	Barrie Thomson Nanci Van Fleet Nanci Van Fleet Jane & David Waldie
Russell Cowman	Rev. Dr. & Mrs. Guston Browning	Joan Jeffrey Jeremiah Sean Matthew Johnson Karen Heidi Morrisson Anne Oliver Hal Ozanne	Ms. Julia & Ross Rathgeber Wendy Hassemer Pam Johnson John Carter Bob Creed Van & Anne Oliver Michelle Jones	Elise Thomson Emily Van Fleet Nola Jo Van Fleet John Van Nice & Cathy Ledeker Elizabeth Walker Blakely Woodard Ray B. Wright Matthew Zambrano	Clint Walker Candice Woodard Lauren Wright Rita Sandoval
Tim Cranor Shelly Dee Judy Dettloff Welcome to the family, baby Hazel! John & Caitlin	John & Catherine Cranor Spafford Robbins Thomas Nunnally Betty Hart Paula & Steve DiAntonio Gary & Beverly Moore				

in memory of

Papa "Pee Wee" Anderson Anna & The Fishers Devon Curtis Arnold Elise Backinger Genevieve Lentz Basler	Brandee Fuller Valinda & Steve Yarberry Beth L. Arnold Julia Powell Tom Basler Alice & Melvin Hawk Shirley Knox Christy Lentz Kate Berry Kathleen Tucker Henry Brandt Valerie & William Brownrigg Vicki Brownrigg Jill Howe Kyle & Taylor Linnebur Mary Smith & Jane Mayo Mr. & Mrs. Wallace Millner Holly & Keith Olszewski Jeremy W. Rabe Jessica & Ryan Rabe Denise & Steve Riegel Kenny & Karla Schinstock Margaret Taylor Toni & Gerald Trebilcock Janet & Michael Yohn	Kenny C. Burt Cary Bush Hercules Butler Hercules & Mars Butler Jeff Carey Coleen - My Sister Hugh Copeland Elsie Crist Ken Burt Marge & Earl Deacon Dick & Lois Dove Orville Flaugh Betsy Flynn Ed Hargraves Judge Pat Hayes Suzanne & Paul Hemphill Warren Hemphill Mark Houston Hillard H. Howard Chelsea Jones	Gary Kring Lyric Nicholson Trary LaMee Annie Butler Bob Knouse Jeanine B. Anderson Valinda & Steve Yarberry Dana Brink Will Burt Kay & Charles Lancaster Caryn Relkin Janet Knowles Keenan Flynn Kim Hargraves Tyrrell & Todd Tyrrell Kazie Deacon Debbie & Greg Hemphill John & Anita Rhodes Jenifer Houston & Alan Busche Michael Freed Lindy Heller Bridget Houston Hyde Clifton Meyer Cindy "Margaret" Harris	Dorie Koone Bill Krueger Sheldon Kushner John David Lentz John David Lentz & Genny Basler Benito & Geraldine Martinez Anthony Montoya Robbie Moses Reed Nelson Helen Scaief Mary Lou Schleher Marian Stephenson Paul Stone Wanda Taylor Jim Tonso Billie Vaughan Criselda Villalón Harry Woods Becky Yarberry	Kim Gately Carol Krueger Julie Kushner & Larry Morgan Diana Dresser Stan & Julie Lentz Jeremy & Emily McComas Patrick & Beverly Dooley Tita Louise Martinez Estella Montoya Holly Odom Nikki Sabatini Hunter Scaief Dot & Hal Olson Carol Krueger Julie Jackson Carol Ann Pinto Genie Shannon Sandra Tonso Mrs. Davie Vaughan Prisila A. Foss September Sack Valinda & Steve Yarberry
--	---	--	---	--	---

**VISIT CREEDE.
STAY IN STYLE.**

VRC has the perfect lodging accommodations for every vacation.

SAVE 10%
Use code: CRT2023

vrc vacation rental collective
The Creede Collection

COME RELIVE THE OLD DAYS AT THE
OLD MINERS INN

THE SAME GREAT FOOD AND DRINKS A TRIED AND TRUE NEW NAME

EST 1976

FORMERLY KNOWN AS PIZZERIA 8852'
PIZZA . BEER . MARGARITAS . LIVE MUSIC
105 N MAIN STREET CREEDE, CO 719-658-1233

COME IN FOR A BEER
AFTER THE SHOW!!!



WWW.SPAREKEG.COM

123 MAIN STREET
OPEN NOON-10PM

STAY FOR THE NIGHT
AFTER THE BEER!!!



WWW.ASPENINNCREEDE.COM

**Community Banks
of Colorado**
A division of NBH Bank, Member FDIC

Supporting our community
just makes common sense.

Some pretty important things have become rare these days. But not at Community Banks of Colorado. We still believe in supporting our community which is why we're proud to support this season of the Creede Repertory Theatre. Community Banks of Colorado. **Where common sense lives.**

29889 US Hwy 160, South Fork | 719.873.5562

CONNECT WITH US

cobnks.com

CRT PRESIDENT'S WELCOME

Dear Friends

We are eager to share our 58th season with you, including *Boomtown!* improv, summer educational camps, and special events. In addition to our featured plays, we are proud of how we contribute to our local community. Earlier this year, elementary school students performed in the musical *Tweet*. Middle school and high school students took part in a regional One-Act Play Competition. Participating students designed all elements of the production and performed all parts in the play, with our guidance and support. Our Young Audience Outreach Tour (YAOT)—celebrating its 40th season—will bring theatre to more than 40,000 students in rural communities throughout the southwestern United States. None of this would be possible without the talented members of our seasonal company; our permanent staff, led by John DiAntonio; and your continued support. Whether by attending performances, introducing new friends, volunteering, or providing financial support, you have helped us succeed and thrive!

On with the show!

Bob Johns

President, CRT Board of Trustees

board



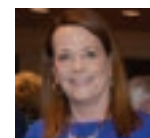
Bob Johns
President
Arlington, TX; Lake City, CO
President of The Kitchen Source
and Manufacturer's Representative
for Wood-Mode Cabinetry.



Jim Loud
*Vice President of Equity, Diversity,
and Inclusion*
Safety Management Consultant
at James Loud Consulting
(he, him, his)



Amy Krueger
Creede, CO; Boston, MA
Owner of The Mac Mine; The
Krueger Family Foundation
Trustee
(she, her, hers)



Kristy Robinson
Past President
Vice President of Fund Development
Dallas, TX; Creede, CO
The Heglund Foundation Trustee
(she, her, hers)



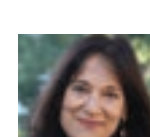
Jen Houston
Secretary of the Board
Creede, CO; Oklahoma City, OK
Longtime CRT Supporter
(she, her, hers)



Karen Miller Nearburg
Dallas, TX; Santa Fe, NM;
Creede, CO
Art Curator
(she, her, hers)



Joe Ford
Vice President of Board Development
South Fork, CO
Network Funding Mortgage,
Texas & Colorado



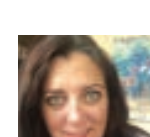
Pam Berlin
New York, NY; Creede, CO
Theatre and Opera Director



Isaac Grody-Patinkin
Creede, CO
Health Equity Lead and
Prevention Coordinator, Silver
Thread Public Health
(he, him, his)



David E. Creasey
Vice President of Finance
Houston, TX; South Fork, CO
Private Wealth Advisor and Senior
Vice President - Investments UBS
Financial Services, Inc.



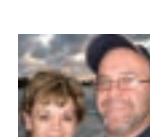
Susan Birdsey
Creede, CO
Owner of Ramble House and
Creede Guide & Outfitters; K-12
Public School Educator



Anne Pizel
Creede, CO
Owner and Broker for Broken
Arrow Ranch & Land Company



Eli Safayan Hudspeth
Pueblo, CO; South Fork, CO
University Professor and Small
Business Development Consultant
(she, her, hers)



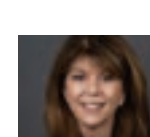
Keith R. Cerny
Creede, CO; Alamosa, CO
Publisher, *Valley Courier*, Div. Mgr.
News Media Corp.



Glynn Polter
South Fork, CO
Retired, 30-year high-tech
career, Former Owner Mountain
Lighthouse



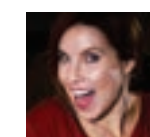
Larry Morgan
Vice President of Facilities
Danbury, CT; Creede, CO
Former Director of the Health
Fund for the union of the City
University of NY faculty



Kym Koch Thompson
Oklahoma City, OK
Founder/Principal for Koch
Comm, LLC and Oros Analytics,
LLC
(she, her, hers)



Joyce Robinson
Creede, CO
Former software programmer/
analyst, Systems Research
Laboratories, Dayton, OH
(she, her, hers)



Elizabeth Zurn Lujan
Alamosa, CO
Owner & Producer at Vinrock
Media, helping businesses attract
more customers with video
marketing
(she, her, hers)

OUR 2023 BOARD OF TRUSTEES

PLAYWRIGHTS & COMPOSERS

Douglas Carter Beane

New Book - *Cinderella*

Ten years as Artistic Director for the Drama Department at Greenwich House. As a sole playwright/librettist, he has earned five Tony nominations and one Olivier nomination. Beane's plays are *The Little Dog Laughed*, *As Bees in Honey Drown*, *The Nance*, *Shows For Days*, *Music From A Sparkling Planet*, *The Country Club*, *Advice From A Caterpillar*, and *The Cartells*. His musicals are Rodgers + Hammerstein's *Cinderella*, *Lysistrata Jones*, *Sister Act*, and *Xanadu*; librettos are for the Metropolitan Opera's *Die Fledermaus* and the summer show at Radio City Music Hall. He wrote the film adaptation of his play *Advice from a Caterpillar* and the screenplay *To Wong Foo, Thanks for Everything! Julie Newmar*.

Hunter Foster

Additional Materials - *Clue: On Stage*

Directing: *Clue: On Stage* (World Premiere), *Guys and Dolls*, *Company*, *Ain't Misbehavin'*, *The Buddy Holly Story*, *National Pastime*, *Summer of '42*, *It's a Wonderful Life* (Bucks County Playhouse); *The Foreigner*, *Cabaret*, *My Fair Lady* (Cape Playhouse); *Grease* (North Carolina Theatre); *Spamalot* (Casa Manana); *Million Dollar Quartet* (Paper Mill Playhouse, Geva Theatre, Ogunquit Playhouse, Gateway Playhouse, Westchester Broadway Theatre). He cowrote the stage adaptation of *Clue* and the books to *Jasper in Deadland*, *Summer of '42*, *The Circus in Winter*, *Clyde and Bonnie: A Folktale*, *The Hollow*, and *Blue Ridge Sky*. As an actor, Hunter's Broadway credits include: *The Bridges of Madison County*, *Hands on a Hardbody*, *Million Dollar Quartet*, *The Producers*, *Little Shop of Horrors* (Tony nomination), *Urinetown*, *Les Miserables*, *Footloose*, and *King David*.

Oscar Hammerstein II

Original Book & Lyrics - *Cinderella*

Born in 1895 into a theatre family, Hammerstein started writing lyrics for Varsity shows at Columbia University while a student, where he met and began collaborating with Richard Rodgers. After withdrawing from Columbia to pursue a career in theatre, his first success was *Wildflower* (1923), followed by collaborations with some of the greatest composers of his day, including George Gershwin, and eight musicals with Jerome Kern, including their masterwork *Show Boat*. The exclusive Rodgers and Hammerstein partnership began with the groundbreaking *Oklahoma!* (1943), followed by *Carousel*, *South Pacific*, *The King & I*, and *The Sound of Music* (to name a few), with one musical for the big screen, *State Fair*, and one for television, *Cinderella*. Personally, and collectively with Rodgers, Hammerstein garnered dozens of awards, including Pulitzers, Tonys, Oscars, Emmys, Grammys, Drama Desk, Drama Critics Circle, Outer Critics Circle, Laurence Olivier, and Evening Standard Awards. Hammerstein died at his farm in Doylestown, Pennsylvania on August 23, 1960.

Michael Holland

Composer - *Clue: On Stage*

Michael's orchestration and vocal arrangement work can be heard on the 2011 *Godspell* revival cast recording (coproducer). As a composer and lyricist, he has written *Horizon Line* (Theatre Latté Da), *Hurricane* (NYMF), *Believe in Me...a Bigfoot Musical* (FringeNYC); incidental music for various theatre companies including Playwrights Horizons, Alley Theatre, Old Globe, Dallas Theater Center, Colorado Shakespeare Festival, Juilliard, and NYU Tisch. As

a performer/arranger/music director, he created the multi-award-winning *Gashole!* (2001–2013). His orchestrations include *Emma! A Pop Musical* (Stageworks), *Disco Party*, and *The Best Christmas Pageant Ever* (Playscripts). Recordings include four solo CDs of original music and the world premiere of "Another Day in the Modern World" on The Maury Yeston Songbook (ps classics).

Beth Kander

Playwright - *Mountain Octopus*

(she, her, hers)

Beth claims tangled Midwestern and Southern roots. The granddaughter of immigrants, her work explores how worlds old and new intertwine—or collide. She earned an MSW from the University of Michigan and an MFA in Creative Writing from Mississippi University for Women. Playwriting honors: Jewish Playwriting Contest (2023); T. Jefferson Carey Memorial Playwriting Award (2022); Henry Award, Best New Play or Musical (2019–2020); Headwaters (2018); Equity Library Theatre Award (2017); Ashland New Plays Festival (2015, 2016); Eudora Welty Awards (2008, 2010, 2012); Getchell New Play Award (2012), and others. Up next: *DO NOT EAT THIS BOOK*, a picture-and-recipes book (Sleeping Bear Press, 2023), and two forthcoming novels. A proud parent-artist, her favorite characters are her two hilarious kids. Representation: Allison Hellegers, Stimola Literary Studio. More: www.bethkander.com.

Ken Ludwig

Playwright - *Dear Jack*, *Dear Louise*

Ken has had six shows on Broadway, seven in London's West End, and many of his works have become a standard part of the American repertoire. His 28 plays and musicals have been performed in over 30 countries in more than 20 languages and are produced throughout the United States every night of the year. *Lend Me a Tenor* won two Tony Awards and was called "one of the classic comedies of the 20th century" by *The Washington Post*. *Crazy For You* was on Broadway for five years and won the Tony and Olivier Awards for Best Musical. His latest play, *Dear Jack*, *Dear Louise*, won the 2020 Charles MacArthur Award for Best New Play of the Year. He is a graduate of Harvard and Cambridge. More: www.kenludwig.com.

Jonathan Lynn

Author - *Clue*

Director of 10 feature films, including the cult classic *Clue* for which he also wrote the screenplay, *My Cousin Vinny*, and *The Whole Nine Yards*. London directing credits: *The Glass Menagerie*; *Songbook* (Olivier and Evening Standard Awards for Best Musical); *Anna Christie* (RSC); *Joe Orton's Loot*; *Pass the Butler*, *Arms and the Man*, *The Gingerbread Man* (Old Vic); *A Little Hotel on the Side*, and *Three Men on A Horse* (The National Theatre, Olivier Award for Best Comedy). Jonathan served as Artistic Director of the Cambridge Theatre Company where he sent nine shows to the West End. Awards: BAFTA Writers Award, two Writers Guild Awards, two Broadcasting Press Guild Awards, NAACP Image Award, Environmental Media Award, Ace Award, and a special award from the Campaign For Freedom of Information.

Leonard Madrid

Playwright - *The Prima's Guide to Funerals*, Headwaters New Play Festival

T. Jefferson Carey Memorial Playwriting Award

(he, him, his)

Leonard Madrid is a theatre artist based in New Mexico.

He is currently the Artistic Director of Blackout Theatre in Albuquerque. His plays have received the Kennedy Center's award for Latinx playwrights three times. He has also participated in the Ignition Festival at Victory Gardens in Chicago, The Ground Floor at Berkeley Rep, and the Colorado New Play Summit at the Denver Center for Performing Arts. Leonard is currently a theatre professor at Eastern New Mexico University.

Marco Ramirez

Playwright - *The Royale*

Marco Ramirez has had plays produced at Lincoln Center Theater, The Kennedy Center, The Humana Festival, The Old Globe (San Diego), The Bush Theatre (London), American Theater Company (Chicago), Soulpepper (Toronto), and Center Theatre Group (LA). Honors include Helen Hayes and Drama Desk nominations, the Outer Critics Circle's John Gassner Playwriting Award, Juilliard's Lila Acheson Wallace Playwriting Fellowship, Lincoln Center's Le Comte du Nouy Award, and TCG's Edgerton Foundation New Play Award. Marco is also a WGA and Emmy Award-nominated TV writer and producer, where his credits include Marvel's *Daredevil* (Netflix), Marvel's *The Defenders* (Netflix), *Sons of Anarchy* (FX), *Orange Is the New Black* (Netflix), and *Fear the Walking Dead* (AMC).

Richard Rodgers

Composer - *Cinderella*

Rodgers was born in 1902, and his career spanned six decades with hits in Hollywood, Broadway, London, and beyond, more than 900 published songs, and 40 Broadway musicals. In collaboration with Lorenzo Hart, Rodgers wrote songs and scores for several movie musicals as well as numerous hits on Broadway and the West End, including *Babes in Arms*, *The Boys From Syracuse*, *A Connecticut Yankee*, and *Pal Joey*. Following Hart's death in 1943, Rodgers formed an exclusive partnership with Oscar Hammerstein II, which produced such musicals as *Oklahoma!*, *Carousel*, *South Pacific*, *The King & I*, and *The Sound of Music*. Collectively, their musicals have garnered dozens of awards, including Pulitzers, Tonys, Oscars, Emmys, Grammys, Drama Desk, Drama Critics Circle, Outer Critics Circle, Laurence Olivier, and Evening Standard Awards. After Hammerstein's death in 1960, Rodgers continued to write musicals and form collaborations with Martin Charnin, Stephen Sondheim, and Sheldon Harnick. He died on December 30, 1979. The Richard Rodgers Theatre on Broadway was named in his honor.

Sandy Rustin

Playwright - *Clue: On Stage*

Sandy Rustin is an actress and award-winning playwright. Her comedy, *The Cottage*, was recently presented by Manhattan Theatre Club with Jason Alexander directing and is in development for an upcoming commercial production in New York. Her sketch comedy musical *Rated P For Parenthood* opened Off-Broadway at the Westside Theatre. Sandy's play *Struck* enjoyed two recent critically acclaimed productions at NJ REP and Theatre Raleigh. Her play *Houston* is the recipient of the New American Musical Award and is currently in development for production. Sandy's newest comedy, *Elijah*, was recently presented as part of Midtown Direct Rep Theatre in the Parlor Reading Series and is in development. Sandy is a member of ASCAP, SAG, AEA, and the Dramatists Guild and is represented by Abrams Artists.

Eric Price

Additional Materials - *Clue: On Stage*

Book and lyrics for *The Violet Hour*, *Radioactive*, *Presto Change-O*, *Around the World*, *Hello Out There*, *The Sixth Borough*; additional material for *Clue: On Stage*; and playwright of an oft-produced adaptation of *Emma*. Production credits include Manhattan Theatre Club, Roundabout Theatre, Goodman Theatre, The Kennedy Center, Barrington Stage, Audible.com, Joe's Pub, and 54 Below. Eric was the longtime assistant to 21-time Tony Award-winning director/producer Hal Prince; he has been a Dramatists Guild Fellow, Eugene O'Neill Theatre Center finalist, and member of the Lincoln Center Directors Lab, Goodspeed's Johnny Mercer Writers Colony, and Rhinebeck Writers' Retreat. Eric was the winner of the 2018 Fred Ebb Award for Musical Theatre Writing. He is an Adjunct Professor of Musical Theatre at Pace University and Molloy College/CAP21.

DIRECTORS & CHOREOGRAPHERS

Brittini Shambaugh Addison

Director - *Cinderella*

See bio on page 77.

John DiAntonio

Director - *Clue: On Stage*

See bio on page 77.

Kyle Haden

Director - *The Royale*

(he, him, his)

Kyle is excited to be returning to Creede, where he directed the award-winning world premiere of *Hazardous Materials* in 2019. Directing credits include the world premiere of *The Devil Is a Lie* (Quantum Theater); *Waiting for Lefty* (Quintessence Theatre); *The Chief* (Pittsburgh Public Theater); *The Realness* and *A Brief History of America* (Hangar Theatre Company); *Hamlet* and *The Winter's Tale* (Island Shakespeare Festival); and *The Tens* (Actor's Theatre of Louisville). He was a 2018 Drama League Directing Fellow and is a member of the League's Directors Council. Kyle is an Equity actor and former Artistic Director of the Ashland New Plays Festival. He's an Associate Professor of Acting and the Senior Associate Head at Carnegie Mellon University's School of Drama. BA: Wake Forest, MFA: Columbia.

Betty Hart

Director - *Mountain Octopus*

(she, her, hers)

Betty is thrilled to return to Creede to direct Beth Kander's beautiful play. Prior CRT shows include *An Iliad* and the online production of *To the Moon*. Recent directing credits include assistant directing *Theater of the Mind* (Denver Center's Off-Center); *Vox Vergere* (Phamaly Theatre Company); *Blackademics* (Vintage Theatre); *Once on This Island* (Town Hall Arts Center), *By the Way, Meet Vera Stark* (Colorado Springs Fine Arts Center); *Polaroid Stories* (Metropolitan State University); *The Scottsboro Boys* and *Crowns* (Vintage Theatre Season Award for Outstanding Director, 2019); *Lady Day* at Emerson's Bar and Grill for the Denver Center Garner Galleria; *Hooded, Or Being Black for Dummies* at the Aurora

supporting colorado communities



CHFA is proud to sponsor the Creede Repertory Theatre's production of "The Royale."

CHFA strengthens Colorado by investing in affordable housing and community development. Our vision is that everyone in Colorado should have the opportunity for housing stability and economic prosperity.

800.877.chfa (2432)

800.659.2656 tdd

www.chfainfo.com

With respect to its programs, services, activities, and employment practices, Colorado Housing and Finance Authority does not discriminate on the basis of race, color, religion, sex, age, national origin, disability, or any other protected classification under federal, state, or local law.



colorado housing and finance authority

Fox Theatre. In 2022, Betty became one of the Co-Artistic Directors of Local Theater Company in Boulder, Colorado.

Andy Hudson

Music Director/Pianist - *Cinderella*

Pianist - *Clue: On Stage*

Composer - *Ask A Kid*

(he, him, his)

Andy is grateful to be returning for a fourth season with CRT! He is based in NYC, and his regional music direction credits include shows with Forestburgh Playhouse, Red Mountain Theatre Company, The Little Theatre on the Square, Syracuse Stage, Vanguard Theatre Company, Oregon Cabaret Theatre, and The Great American Melodrama, among others. He is passionate about theatre education and has led many educational camps and masterclasses, directed several children's theatre productions, and written music and lyrics for three new musicals for young audiences. His work as an arranger and orchestrator has been heard in many new revue shows and cabarets. He loves long books, small dogs, and frozen pizza. He sends love to Brian and the fam, always.

Nikki Mirza

Choreographer - *Cinderella*

(she, her, hers)

Nikki is delighted to make her Creede Repertory Theatre debut! She is a director/choreographer/performer based in the Washington, DC, area. Select credits include: Olney Theatre Center: *Dance Nation* (Choreographer, Assistant Director); NextStop Theatre Company: *Every Brilliant Thing* (Director), *Matilda* (Choreographer); 1st Stage: *Secret Things* (Choreographer, Assistant Director); Kelrik Productions: *Pinkalicious* (Choreographer); Barnstage Theatre Co: *The Secret Garden* (Choreographer, Performer); Tenth Ave. Productions: *35mm* (Choreographer, Performer); Goodspeed Opera House: *Christmas in Connecticut* (Assistant Director); La Jolla Playhouse: *Bhangin' It* (Assistant Director, Swing), *Light Years Away* (Performer); Weathervane Playhouse: *9 to 5* (Director, Choreographer), *Steel Magnolias* (Director). Upcoming projects: Olney Theatre Center: *INK* (Choreographer); Weathervane Playhouse: *Kinky Boots* (Director, Choreographer). <https://nikkimirza55.wixsite.com/groovy>.

Michael Perlman

Director - *Dear Jack, Dear Louise*

(he, him, his)

A director and writer, Michael returns to CRT for his ninth time, after previously directing *Is He Dead?*, *Language of Trees*, *Annie Get Your Gun*, *Our Town*, *She Loves Me*, *Barefoot in the Park*, and *Always...Patsy Cline*. He's directed at Goodspeed Opera House, Trinity Repertory Company, Cleveland Playhouse, Boise Contemporary Theater, Juilliard School of Drama, and the Brown/Trinity MFA Programs. Associate Directing credits include the Public Theater and Roundabout Theater Company. His plays include *From White Plains*, a recipient of a GLAAD Media Award, and *At the Table*, which received multiple Jeff Awards including Best Production of a Play. Michael is an Artistic Associate with both Fiasco Theater and Fault Line Theatre. Michael is a member of SDC, a Drama League Directing Fellow. BA/MFA: Brown University.

our company

DESIGNERS & CREATIVES

Ann Dee Alvidrez

Scenic Designer - *Dear Jack, Dear Louise*

John Gary Brown

Company Photographer Emeritus

(he, him, his)

"Brownie" has been CRT's company photographer since 1974. He is proud to have created a voluminous photographic archive of shows and events and wishes he could have started in 1966! Brown received an MFA from the University of Washington and has sold over 500 oil paintings to museums, galleries, corporations, and private collectors since 1970. The University of Kansas Press published his photographic history of cemetery art, titled *Soul in the Stone* in 1993. Brown's artwork has won numerous prizes in juried exhibitions, including "First Prize, regardless of Medium" at Kansas City's Nelson Atkins Museum. One of his paintings was purchased by the Institute of Arts and Letters in New York. He is happily married to CRT actress Christy Brandt.

Bryan Keith Ealey

Lighting Designer - *The Royale*

(he, him, his)

Bryan is a Houstonian and a Board Member for NobleMotion Dance Company (Houston). He holds a BA in Drama from Prairie View A&M University (Texas) and an MFA in Lighting Design from the University of California, San Diego. He has worked in venues across the country, such as The Fox Theatre (Detroit) and Madison Square Garden and Alvin Ailey Theater (New York); he worked as an Audio Engineer and Lighting Designer at House of Blues Houston; Lighting Director for River Pointe Church; Associate Production Coordinator at Stages Theatre (Texas); and Dance Technical Director at Sam Houston State University. Bryan's passion for lighting design is rooted in the fundamental ability to shape the stage in a frame that supports, gives focus, and elevates the performance.

Kevin Frazier

Lighting Designer - *Cinderella, Clue: On Stage, Dear Jack,*

Dear Louise, Mountain Octopus

(he, him, his)

Credits include Cleveland Playhouse, Merrimack Rep, Aurora Theatre, Synchronicity Theatre, The Warehouse Theatre, The Peterborough Players, Burning Coal Theatre, and the NY and DC Fringe Festivals. Educational credits include Furman University, The Gainesville Theatre Alliance, Case Western Reserve University, and Lehigh University. International credits include Teatri Metropol (Tirana, Albania). Kevin is an Associate Professor at Wake Forest University in NC. Thanks to his family for their love and support. These designs are dedicated to Kate Berry and Brittini Addison, who helped make Creede feel like home.

Ethan Fuller

Sound Designer - *Dear Jack, Dear Louise*



National Small Print Show
Mountain Shoot Out
Photography Show
Silver Thread Studio Tour
Steamroller Printmaking
Music in the Park
Sundays at 2pm
creedeartscouncil.com



**YOUR SPOT FOR
DELICIOUS BAKED GOODS
SCRUMPTIOUS LITE BREAKFAST
& LUNCH!**
Come visit us at
103A Main Street in Creede!
(719) 758-2880



A MERCANTILE &
CREEDE TRADING CO.
FUDGE STORE
Fudge and Retail therapy
720-252-3426 creedetradingco@gmail.com



WANTED
Rock Hounds
Creede Rock & Mineral Show
August 4, 5 & 6, 2023
10 a.m. to 5 p.m.
FREE ADMISSION
www.creederocks.com



gracie elaine
PHOTOGRAPHY
A couple in a field with mountains in the background.



Beautiful cabin in Bristol Head Acres
Open year round for your adventures.
Book now!
Book your next
Creede vacation!
Instagram: @hummingbirdhomedecorcreede




OPEN 9am-8pm EVERYDAY
LIQUID AMBITIONS
CREEDE, CO
Beer • Wine • Spirits
COME ON DOWN...
WHAT EVER YOU RIDE!
LOCATED ON
HWY 149
ON THE WAY
INTO TOWN




CREEDE
DENTAL WORKS
719-658-0322

our company

Lindsay G. Fuori
Scenic Designer – *Cinderella, Clue: On Stage, Mountain Octopus, The Royale*
Terrence & Polly Jones Scenic Designer
(she, her, hers)
Lindsay is a New York-based Scenic Designer. She is thrilled to be returning to Creede for a third season. Recent credits include: *Millennials Are Killing Musicals* (Out of the Box Theatrics); *Waiting for Lefty* (Quintessence Theatre); *Candida* (Gingold Theatrical, Off-Broadway); *El Matrimonio Secreto* (Florida Grand Opera); and *Made by God* (Irish Repertory Theatre). Lindsay was nominated for an Elliot Norton Award for her work on *Parade* (Moonbox Productions 2019). She received a Henry Award from the Colorado Theatre Guild for her work on *Hazardous Materials* (CRT 2019). Lindsay holds a BFA in Scenic Design from Boston University. More: lindsayfuori.com

Elly Hunt
Costume Designer – *Dear Jack, Dear Louise*
(they, she)
Elly is a craftsperson, artist, and costume designer based in Denver. This summer, you can see more of Elly's work at Thingamajig Theatre Company in both *The American Trailer Park Musical* and *Godspell*. Elly's recent work includes costume design for *Bright Star* and *A Charlie Brown Christmas* (Thingamajig); *An Iliad, El Guyabo/The Guarva Tree, To the Moon* (CRT); and styling for a David Yarrow photoshoot. In 2020, Elly was nominated for Broadway World Denver's Costume Design of the Decade for both Thingamajig's *Men on Boats* and CRT's *Ripcord*. *Dear Jack, Dear Louise* was nominated for Costume Design of the Year in 2021.

Becca Janney
Costume Designer - *Cinderella*
Becca Janney is delighted to have designed costumes for *Cinderella*. Becca is a second-year costume design MFA candidate at University of Maryland. Other design credits include: Maryland Opera Studio (*Don Giovanni*); UMD (*Lost Patterns, Fefu and Her Friends*); Baylor Theatre (*Dancing at Lughnasa, Peter and the Starcatcher, Rhinoceros, She Kills Monsters: Virtual Realms*); WaterTower Theatre (*Everything is Wonderful, Godspell, Harvey*); and Stage West Theatre (*Ada and the Engine*). More: beccajanney.com.

Susannah McLeod
Production Photographer - *Dear Jack, Dear Louise, Mountain Octopus, Clue: On Stage*
(she, her, hers)
Susannah is thrilled to be back at CRT to capture some of the magic. Her photography business, McLeod9 Creative (www.mcleod9creative.com), offers a wide variety of photographic services: actor and corporate headshots, business promo shots, weddings, events, family portraits, and almost anything in between. When not behind the camera, Susannah is a Denver-based actor and is performing this summer as Don John in the Colorado Shakespeare Festival's *Much Ado About Nothing*. Other recent credits include: *A Christmas Carol* (Denver Center for the Performing Arts); *Hurricane Diane* (Thunder River Theatre Company); *The Other Josh Cohen* (DCPA Garner Galleria); and *Fun Home* (Miner's Alley Playhouse). More: www.susannahmcleod.com.

Rebel Mickelson
Costume Designer - *Clue: On Stage, Mountain Octopus*
(she, her, hers)
Rebel is thrilled to be joining the design and production team

at Creede Rep this summer! She attended graduate school at Southern Illinois University in Carbondale where she earned her MFA in Theater with an emphasis in Costume Design. Currently, she is the Head of Costume Design for Western Illinois University where she gets to teach graduate and undergraduates the art of costume design. She has also worked for the Cumberland County Playhouse, Little Theatre on the Square, Glimmerglass Opera, McLeod Summer Playhouse, and toured with the Moscow ballet. Rebel would like to thank everyone who has helped her get this far, especially her family, who has supported her and her two crazy cats who keep her grounded.

Alethia Moore-Del Monaco
Costume Designer - *The Royale*
(she, her, her)
Alethia is a West Coast-based freelance costume designer/stylist for film, television, theatre, and opera. She has designed for numerous world premieres, including *Hazardous Materials* at Creede Repertory Theatre. She has also worked internationally in Singapore on a pre-Broadway run of the musical *Judah Ben-Hur*. She also worked for four seasons at the Oregon Shakespeare Festival. She received her MFA in Theatre from University of California, Irvine, and her BA in Theatre with an Emphasis in Costume Design from Southern Oregon University.

Brooke Ophoff
Associate Company Photographer
See bio on page 78.

Stephen Quiller
Water Media Artist – *Mountain Octopus*
Stephen is an internationally known painter, Dolphin Fellow, and signature member of the American Watercolor Society, National Watercolor Society, and others. He received the 2018 Silver Medal and the 2014 Gold Medal of Honor at the American Watercolor Society's International Exhibitions, as well as many other honors. Known for water media and color, Stephen has written seven bestselling books on these subjects. He has signature lines of watercolor, palettes, and brushes produced by the Jack Richeson Company and has developed the Quiller Color Wheel, used by artists throughout the world. He has painted professionally in Creede since 1972. He and his wife Marta live in Creede, Colorado, and during the summer months run the Quiller Gallery where his works are on view. To view his work and learn more, visit www.quillergallery.com.

Max Silverman
Original Music & Sound Designer - *Mountain Octopus, The Royale*
(he, him, his)
Max is a Composer and Sound Designer originally from Boulder. Covid brought him back to his Colorado home where he joyfully joined the theatre community in Boulder/Denver, while continuing his work in New York. Some highlights include: Denver Center for the Performing Arts, Colorado Shakespeare Festival, Arvada Center, Curious Theatre, Creede Repertory Theatre, The Catamounts, Local Theater Co., Theatre Or. NYC: Atlantic Theatre, MCC, TFANA, BAM, Encores! Off-Center, Columbia University, AADA, and Juilliard. International: Hoodoo Immersive,

Berlin and CLB Berlin. Regional: Williamstown, Trinity Rep, Hartford Stage, Penguin Rep, Cara Mía. Max has written music for podcasts, advertisements, and short films. Max is a proud member of the Boulder Emergency Squad. More: max-silverman.com.

Johnathan Taylor

Sound Designer - *Cinderella, Clue: On Stage* (he, him, his)

Johnathan is a Sound Designer, Composer, and Actor based in Atlanta, GA. He has been working in the arts since childhood and began his theatrical journey in college with Aurora Theatre. His credits include *Knock Knock* at Alliance Theatre, *FADE* at The Kitchen Theatre, *Edith Can Shoot Things and Hit Them* at The Kitchen Theatre, *Square Blues* at Horizon Theatre, *By the Way, Meet Vera Stark* at Colorado Springs Fine Arts Center, and *An Iliad* at Creede Repertory Theatre. He loves creating lasting experiences and feelings for every audience member and every person he comes into contact with.

Ellen Valencia

Dramaturg - *The Royale* (she, her, hers)

Ellen is a dramaturg, director, and part-time lecturer at Rutgers University. She was on the dramaturgy team at State Theatre New Jersey and worked in artistic engagement at Tony Award-winning McCarter Theatre. As a director, Ellen was the Producing Artistic Director of the Hub City Theatre Festival where her favorite project was *To Be Young, Gifted and Black*; she also directed *Justin's Side*, produced in partnership with Oregon Shakespeare Festival. Ellen was on the directing teams at the Tony Award-winning Crossroads

Theatre Company and served as a Producing Associate for Rohina Malik's *Mecca Tales*. Ellen holds a BA in Theatre Arts and Africana Studies from Rutgers University and is a part of the MFA Dramaturgy program at Columbia University, class of 2025.

ACTORS



Lavour Addison*

Jean-Michel - *Cinderella*
Mustard - *Clue: On Stage*
Wynton - *The Royale*
(he, him, his)

Lavour was last seen in *Our Town* and *The Book Club Play* (Arvada Center). Other credits include Jay in *The Royale* (Butterfly Effect Theatre Company); Robin Hood in *Sherwood: The Adventures of Robin Hood*, the Poet in *An Iliad* and *It's a Wonderful Life Radio Play* (Creede Repertory Theatre); *Stick Fly* and *Animal Farm* (Arvada Center); *House Arrest* and *Small Mouth Sounds* (Theatreworks Colorado Springs); *Strings* (Long Wharf); *Macbeth* (Idaho, Tahoe, Oberlin Shakespeare Festivals); and *Shakespeare in Love* and *The Good Peaches* (Cleveland Play House). *We Made Aria and Idris* (The Brittni Theatre).



Kate Berry*

Helen - *Mountain Octopus*
See bio on page 77.



Andy Brown

Green - *Clue: On Stage*
(he, him, his)

Andy is delighted to return to the Creede Rep stage, having last been a company member in 2013 in *A Funny Thing Happened on the Way to the Forum*, *The Taming of the Shrew*, and *William Shakespeare's Land of the Dead*. Other favorite regional roles include Bob Cratchit in *A Christmas Carol*, Frog in *A Year with Frog and Toad*, C.S. Lewis in *Freud's Last Session*, David O. Selznick in *Moonlight and Magnolias*, and Gooper in *Cat on a Hot Tin Roof*. Andy offers many thanks to John and the powers that be for the opportunity to collaborate a bit this summer. *Excelsior!*



Anne Faith Butler*

Madame - *Cinderella*
Peacock - *Clue: On Stage*
(she, her, hers)

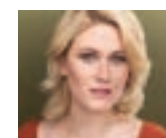
2023 marks Annie's 20th season at Creede Rep. Her favorite experiences were in *Ripcord, August: Osage County, Mrs. Mannerly*, and any play where she got to share the stage with her beloved Hercules. She is an alumna of The National Theatre Conservatory, where she earned her MA. She has been a full-time Creede resident since 2001 and sings her sentiment, "Oh, Creede, won't you marry me?" because of the love she has felt for the place and its people. She dedicates this season to the good people of Creede and the Valley.



Christy Brandt*

Martha - *Mountain Octopus*
(she, her, hers)

Christy is delighted to be returning for her 49th season. She has appeared in more than 130 productions at CRT, including Helen in *The History Room*, Kimberly in *Kimberly Akimbo*, and Miss Helen in *The Road to Mecca* (Denver Post Ovation Award). Her role as Marilyn in *Ripcord* in 2019 was one of her most treasured experiences here. Christy coauthored and performed in *Six Women with Brain Death*. She appeared in Ang Lee's *Ride with The Devil* and a recent release called *The Sublime and Beautiful*. She has worked with Maples Repertory Theatre, The Coterie Theatre, Unicorn Theatre in Kansas City, and the South Carolina Repertory Theatre. She has been happily married to photographer and painter John Gary Brown since 1981.



Dana Cullinane

Marie - *Cinderella*
Scarlet - *Clue: On Stage*
(she, her, hers)

Dana is pleased to be making her CRT debut this summer. In the spring, Dana was rocking out as Miss Sandra in *All Shook Up!*, the Elvis musical, at Temple Theatre in North Carolina. Before that, Dana spent the year Off Broadway in *The Office! A Musical Parody*. Prepandemic, she lived in Japan, working as a main-stage performer for Tokyo Disneyland. Some other professional credits include: *Guys and Dolls* (Utah Shakespeare Festival), *Anything Goes* (Forestburgh Playhouse), *Kinky Boots* (Arts Center Coastal Carolina), *Little Shop of Horrors* (La Comedia Dinner Theatre), and *White Christmas* (Roxy Regional Theatre). Keep up with Dana at www.danacullinane.com and on Instagram @danacullinane.

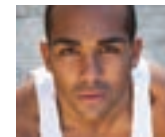
our company



Cameron Davis

Charlie - *Mountain Octopus*
Ensemble - *Cinderella*
Fish - *The Royale*
Performer - *Boomtown!*
(he, him, his)

Cameron is thrilled to be making his return to Creede and Creede Repertory Theatre! You may have seen him last summer as the Sheriff in *Sherwood: The Adventures of Robin Hood*, and he is proud to be a part of this wonderful community and company! At other theatres: Romeo in *Romeo and Juliet* (Shakespeare & Company); Fish in *The Royale* (Butterfly Effect Theatre of Colorado); Donalbain in *Macbeth* and Stokes in *How to Catch Creation* (Oregon Shakespeare Festival); Belize in *Perestroika*, Frederick in *The Rover*, and Avery in *The Flick* (Oregon Center for the Arts); Tom in *Actually* (Black Swan Project).



Lee Hollis Bussie

Sebastian - *Cinderella*
Plum - *Clue: On Stage*
(he, him, his)

Lee Hollis is thrilled to be making his CRT debut with this fantastic season! Off- Broadway credits include: *Soul Doctor* (Actor Temples Theatre); and *Whoopee!* and *Little Mary Sunshine* (Theatre Row). Other selected credits include: Papermill Theatre, Phoenix Theatre, Greenbrier Valley Theatre, The Barnstormers Theatre, West Coast Black Theatre Troupe, Tibbits Opera House, Black Hills Playhouse, West Central Illinois Arts Center, Second Avenue Theatre, and Charleston Stage. Some of his favorite roles include: Lloyd Boateng - *One Man, Two Guvnors*; Lockwood - *History Boys*; Inspector Japp - *Black Coffee*; Fred - *A Christmas Carol*; Tom Collins - *RENT*; and Jamie - *The Last Five Years*. Find out more about Lee at Leehollisbussie.com or on Instagram @leehollisbussie.



Matthew Tyler Horn*

Michael - *Mountain Octopus*
Pinkleton - *Cinderella*
Ensemble - *Clue: On Stage*
(he, him, his)

CRT credits include *Cabaret at the Creede Hotel* (Tyrone Crankshaft), *Red Riding Hood* (Wolfgang), *25th Annual Putnam County Spelling Bee* (William Barfee), *Presidents!* (Agent Fontanelle), *How to Succeed...* (Bud Frump), *Drowsy Chaperone* (Robert Martin), and *Harry the Great* (Eugen Sandow). Select regional credits: *Les Miserables* (Javert), *La Cage Aux Folles* (Francis), *Cloak & Dagger* (Detective Nick Cutter), *Sherlock Holmes: The Final Adventure* (King of Bohemia) at Lake Dillon Theater Company; *Who's Afraid of Virginia Woolf?* (Nick) and *Farragut North* (Stephen) at Steel River Playhouse; *The Life & Death of Harry Houdini* (Manager) for EgoPo Classic Theater; *Two Gentlemen of Verona* (Duke of Milan) for Delaware Shakespeare Festival. Training: BFA Temple University, MFA University of Missouri-Kansas City. Director of the New Hope Solebury Middle School theatre program since 2018.

MICHELLE MEALS
MARKETING STRATEGIST
• DIGITAL MARKETING
• SOCIAL MEDIA
• CONTENT CREATION
214-415-3648
michelle@michellemealsmarketing.com
michellemealsmarketing.com

HINSDALE MINERAL
Silver Thread
PUBLIC HEALTH DISTRICT
Proud Supporters of CRT

SILVER THREADS
Quilt Guild
AMETHYST ANNIVERSARY
A GEM OF A SHOW
September 13 - 17, 2023 Admission \$5
CREEDE COMMUNITY CENTER : CREEDE, CO
Friday & Saturday: 9am - 5pm | Sunday: 10am - 2pm
Show includes:
Vendors • Quilter's Cafe • Gift Shop • Scissor Sharpening (Sat.) • Quilt Raffle
Visit us at: www.SilverThreadsGuild.com Tickets: \$5/ea or 5 for \$20

ELEV. 8,852 FT.
CABIN+GIFT
CREEDE, COLORADO

LAKE CITY ARTS

Performances, classes, concerts,
gallery openings and more!
Lake City, Colorado

LAKE CITY

A PEAK EXPERIENCE

Hinsdale County encompasses more than 1,000 square miles of untamed beauty in the mystical San Juan Mountains. For hikers to bikers, climbers, fishermen, hunters, 4-wheel enthusiasts, birdwatchers and history buffs—magical moments and memories are passed on and recreated generation after generation.

ONLY AN HOUR FROM CREEDE

LAKE CITY EVENTS

Too many to list them all
Visit LakeCity.com/events
for more events and info.

Annual Spring/ Summer/Fall Events

- Lake City Star Fest
- San Juan Solstice - 50 Mile Run
- Independence Celebration (Fireworks - July 3)
- Ducky Derby
- Town-wide Yard Sale
- Lake City Arts Annual Arts and Crafts Fest
- Alpine 50 - 50 Mile Bike Race
- Labor Day in the Park
- Uncorked Wine and Music Festival
- Oktoberfest

Weekly Spring/ Summer/Fall Events

- Bingo
- Geologic, Historic & Ghost Tours
- Night Skies Tours
- Plays, Live Music, & Art Workshops

Visit LakeCity.com or stop by the Visitor Center for maps and visitor information.

Stay Active!

San Luis Valley
HEALTH
SPORTS MEDICINE
TREATMENT | INJURY PREVENTION | REHAB

719-587-5700 SLVH.org

BOOKS • MAGAZINES • LOCAL WARES
LOCAL AUTHORS • LOCAL HISTORY

independent downtown bookstore

602 Main St., Alamosa, CO 81101
(hours: 10-6 mon-sat) • 719-589-3464

>> narrowgaugebooks.com

Why do some of our staff,
company, and Trustees choose
to list their pronouns?



our company



Julian Ibarra

Actor - *The Country Dog & The Prairie Dog*
(he, him, his)

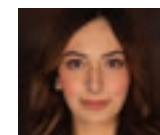
Julian is thrilled to be returning to Creede for another YAOT production! At CRT, he was previously seen in *El Guayabo/The Guava Tree* (Team Pink). Other theatre: *An Almanac for Farmers and Lovers in Mexico*; *In The Heights* (Dir. Luis Salgado), *The Normal Heart*, and *Measure for Measure* at Oklahoma City University (OCU); *Palo Verde*, a new musical workshop, at Co.lective Arts Productions. Additional Credits: OCU BFA Acting '23 and Commonwealth Shakespeare Company Virtual Acting Apprenticeship/Co-Lab Program alum. Julian thanks his family and friends for their unwavering support. He is grateful for the opportunity to continue making an impact on the lives of young people. *Adelante!* Follow him on Instagram @julianxibarra.



Tony King

Topher - *Cinderella*
Jay - *The Royale*
(he, him, his)

Tony is a skilled actor, writer, and Afro-creative from Charlotte, NC. He completed his MFA in acting at the University of Connecticut. He has a passion for creating riveting stories based in surrealism and expressing the universality of the Black experience. Tony is thrilled to be sharing stories again at Creede Repertory Theatre! Credits include: *Sherwood: The Adventures of Robin Hood* (Little John), *RENT* (Collins), *Food for the Gods* (Frank), *Little Shop of Horrors* (Voice of Audrey II). Follow him on Instagram @therealtonyking.



Jayda Marcella Mendiola

Actor - *The Country Dog & The Prairie Dog*
(she, her, hers)

Jayda is thrilled to be joining the Creede Repertory Theatre Company. Her credits include: *Spring Awakening* (Wendla), *American Idiot* (Whatsurname), *You're A Good Man, Charlie Brown* (Lucy), *Beauty and the Beast* (Belle), *CATS* (Grizabella), and *Bring It On: The Musical* (Nautica). She extends endless love to her mom, Grammy and Papa, Nene, Liam, and her sweet little sisters, Alessandra and Paloma! Follow Jayda on Instagram @jaydamendiola.



Savanna Padilla

Gabriella - *Cinderella*
Ensemble - *Clue: On Stage*
Lou - *Mountain Octopus*
(she, her, hers)

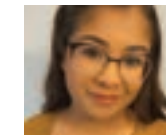
Savanna is an Actor and Teaching Artist originally from Humboldt County, California. Theatre credits include: *Pick Me Last* (La Jolla Playhouse); *Life Sucks* (Cygnet Theatre); *Christmas Contigo* (Oregon Cabaret); *Shakespeare in Love*, *Mojada: A Medea in Los Angeles*, and *Off the Rails* (U/S, Oregon Shakespeare Festival); *The Refugee Hotel* (Latinx Play Project); *The Epic of Gilgamesh* (Oregon Fringe Festival); *Dream House* (Latinx New Play Festival); *Written in Stone* (La Jolla Playhouse WOW Fest); and *Saints Go Marching* (Ingenio Milagro Festival). SOU credits include: *The Resistible Rise of Arturo Ui*, *The Secret Garden*, *The Crucible*, *Little Shop of Horrors*, *Caliban's Dreams*, and *Horse Girls*. UC San Diego credits include: *Shame Spiral*, *Life Is a Dream*, *Orestes 2.0*, *Elektra*, *HEAP*, and *A Midsummer Night's Dream*. MFA: UC San Diego, BFA: Southern Oregon University.



Stuart Rider*

Ensemble - *Clue: On Stage*
Kurt - *Mountain Octopus*
Max - *The Royale*
(he, him, his)

This is Stuart's fourth season at CRT. He first appeared in Charlie Thurston's *The History Room*. The following season, he was in *Arsenic and Old Lace* and *General Store*. Last year he was back as Frank Butley in *Native Gardens* and Max in *The Royale*, which sadly was canceled due to a Covid outbreak. He could not be happier to be back this season to see *The Royale* through with the original wonderful cast and director, Kyle Haden. He is also appearing this season in Beth Kander's touching *Mountain Octopus* and the hilarious whodunnit, *Clue: On Stage*. Stuart extends a huge thanks to the magnificent board and staff who have worked so hard to keep this magical place thriving through these difficult times—a heartfelt cheers to you all!



Heidi Carann Snider

Ella - *Cinderella*
Yvette - *Clue: On Stage*
Performer - *Boomtown!*
(she, her, hers)

Heidi is thrilled to be back on the CRT stage! She recently graduated from Colorado Mesa University where she received her BFA in Musical Theatre. You may have seen her around Denver in Vintage Theatre's production of *Sophisticated Ladies* or in The Catamounts regional premiere of *Small Ball*. Her previous stage credits also include Papa Ge in *Once on this Island*, Eliza Doolittle in *My Fair Lady*, and Richard Henry Lee in an all-female production of *1776*. Heidi is excited for future projects and looks forward to working with like-minded individuals who share her passion for storytelling. Visit heidicsnider.com for upcoming projects!



Sierra Stallman

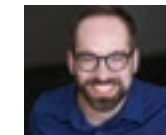
Ensemble - *Cinderella*
Patron Services Associate
(she, her, hers)

Sierra is thrilled to be making her CRT debut! She is a recent graduate of the University of the Arts in Philadelphia, with a BFA in Musical Theatre. Regional Credits include: *A Christmas Carol* (Hangar Theatre). University credits include: *Urinetown*, *Woyzeck* (UArts); and *Homestead*, *Trojan Women* (Rose Bruford College). She extends thanks to everyone at CRT for making this such a great experience! Instagram: @sisi_stallmann.



Bethany Eilean Talley

Charlotte - *Cinderella*
See bio on page 78.



Graham Ward*

Jack - *Dear Jack, Dear Louise*
Ensemble - *Cinderella*
Wadsworth - *Clue: On Stage*
Performer - *Boomtown!*
(he, him, his)

Graham is an actor and writer from Boston, currently based near Cleveland. This is his 12th season at Creede Repertory

Hello neighbor!

Welcome to Creede...

Rural beauty with big-city Internet

SYMMETRICAL SPEEDS • NO MONTHLY EQUIPMENT FEES
NO CONTRACT • NO DATA CAP • FIBER SPEEDS UP TO 1 GBPS
TELEPHONE • 24/7 CUSTOMER SERVICE



POWERED BY SLVREC

HIGH-SPEED BROADBAND
INTERNET & TELEPHONE

www.ciello.com • 719.852.3538

Open 7 days a week

COFFEE BISTRO
Specialty Coffee
Smoothies • Free WIFI
Full Breakfast & Lunch
Indoor/Outdoor seating

GIFT SHOP
Unique & beautiful gift
items for all occasions
Colorado souvenirs

TINY TIMBERS
A Tiny Home Resort

Cabin Rentals
Coffee Bistro
Breakfast & Lunch

TINY HOME & CABIN LODGING
SPA coming 2023

tinytimbersresort.com • 28422 Hwy. 160, South Fork, CO

LODGE ROOMS
CABINS
RV SPACES

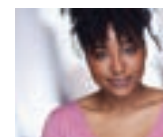
RAINBOW
Lodge & RV Park

NEWLY RENOVATED

(719) 873-5571
30350 HWY 160
SOUTH FORK, CO

RAINBOWLODGE&SOUTHFORK.COM

Theatre. Notable roles include Jeffrey in *Mrs. Mannerly*, George in *Our Town*, Nicely-Nicely in *Guys and Dolls*, Cliton in *The Liar*, and Steve in *The History Room*. Other regional credits include *The 39 Steps* (Lone Tree Arts Center), *The Great Gatsby*, *Harvey*, and *The Mousetrap* (Arvada Center). Outside of theatre, Graham is a published adventure designer for Dungeons & Dragons Adventurers League, an independent roleplaying game developer, and a Game Master for hire on Start Playing Games.



Teonna Wesley*
Ensemble - *Cinderella*
Ava - *Mountain Octopus*
Nina - *The Royale*
(she, her, hers)

Teonna is grateful to be back for her 2nd season at CRT. You may remember her last season as Truvy in *Steel Magnolias* and as the dance choreographer for *Sherwood*. This Kansas City native is a graduate of the New York Conservatory of Dramatic Arts. Some of her regional credits include *The Ripple*, *The Wave that Carried Me Home*, *The Royale*, and *For Colored Girls* (KC Rep). She would like to thank her family for their constant support. Follow her on Instagram @Tefamous.



Caitlin Wise*
Louise - *Dear Jack, Dear Louise*
White - *Clue: On Stage*
Performer - *Boomtown!*
(she, her, hers)

Caitlin is thrilled to join CRT for her 13th season. She's appeared in *Always...Patsy Cline*, *Sherwood*, *Miss Holmes*, *Kind of Red*, *The Syringa Tree*, *Private Lives*, *Our Town*, and *Unnecessary Farce* (CRT); *The Christians*, *Tom Sawyer*, *A Midsummer Night's Dream*, *A Christmas Carol*, *Dracula*, and *Othello* (Denver Center); *The Importance of Being Earnest*, *Around the World in 80 Days*, *Is He Dead?*, and *Good on Paper* (Arvada Center); *Wild Honey*, *The Game of Love and Chance*, *Girl of the Golden West*, and *The Liar* (Theatreworks); and *Much Ado About Nothing* and *To Kill A Mockingbird* (CSF). Caitlin received her MFA in acting from the National Theatre Conservatory. She is honored to call Creede home, married John here, and welcomed their children Leo, Sebastian, and Hazel into the mountains.

MUSICIANS

Dawson Horey
Woodwinds

Dawson is a musician from Buffalo, New York, who loves playing music! Whether it's common or uncommon woodwind instruments, he is always making music. He is excited to be in Colorado for the first time and plans to explore as much as possible. He is especially thankful to play with such a wonderful pit for this production of *Cinderella*.

Megan Rayl
Cellist

(they, them, theirs)
Megan is thrilled to be returning home to Colorado for *Cinderella* at CRT! Originally from Denver, Megan is a one-of-a-kind cellist who specializes in Musical Theatre and Contemporary Performance. Currently, Megan resides in New Jersey and is pursuing a master's degree in Cello Performance while studying under Dr. Tomoko Fujita at Montclair State University. Megan obtained a BM in Cello Performance and a BS in Agriculture, Animal Science from Fort Hays State

our company

University in Hays, Kansas. Megan is becoming a popular call for cello books in musicals of all genres, as well as cabaret shows throughout the tri-state area. Notable collaborations include Rahzel, Jon B, The Cavani String Quartet, Seth Parker Woods, and Rhiannon Giddens.

STAGE MANAGEMENT

Mary Ruth Knackstedt*
Stage Manager
(they, she)

Mountain Octopus, Cinderella
Mary Ruth is excited to be working at Creede for the first time! They've always loved working in theatre, and previous credits include: *Into the Woods*, *Trouble In Mind*, *Our Town/Nuestro Pueblo*, *Cake Ladies* (Dallas Theatre Center); *And Then There Were None* (Florida Rep); *Big Scary Animals* (Theatre Three); *If Pretty Hurts* (Jubilee Theatre); *10 Seconds* (Dallas Children's Theater); and *The Rape of Lucretia* (SMU). Mary Ruth is a graduate of Southwestern University and proud to be an AEA freelance Stage Manager. More: www.maryruthknackstedt.com.

Miranda Ray
Assistant Stage Manager
Dear Jack, Dear Louise; Clue: On Stage; The Royale
(she, her, hers)

Kelsea Seibold
Assistant Stage Manager
Mountain Octopus, Cinderella
(she, her, hers)

Kelsea is thrilled to be back joining CRT for her second season! Former CRT credits include: *Always...Patsy Cline* and *Native Gardens*. Other regional credits include: *Theater of the Mind* (DCPA); *Kinky Boots* (The Arvada Center); *It's a Wonderful Life* (Breckenridge Backstage Theatre); *Company* (CU Theatre & Dance); and *The Odyssey* and *A Midsummer Night's Dream* (Colorado Shakespeare Festival). Kelsea is a recent graduate of the University of Colorado Boulder with a BFA in Stage Management.

Wilhelm Peters*
Stage Manager
Dear Jack, Dear Louise; Clue: On Stage; The Royale
(he, him, his)

Wilhelm is happy to be back for season two at Creede Rep! He was a part of last season's teams that made you sob in a Southern dialect and cheer in a British dialect. When not working in the mountains, he lives in Chicago, enjoying Burger Mondays and Pizza Wednesdays with Paul and Agatha Trunchbull. Recent credits include Raven Theatre's world premiere of *The Last Pair of Earlies*, Porchlight Music Theatre's acclaimed production of *RENT*, and Nashville Rep's production of *The Curious Incident of the Dog In the Night-Time*. Wilhelm thanks you for listening to our stories and experiencing live theatre. Proud AEA member. Questions, comments, funny jokes: smwilhelmpeters@gmail.com.

We are proud to support Creede Repertory Theatre in its 58th season.

Theatre is essential to the cultural and economic health of our communities.

2022 & 2021 Community Rural Lender of the Year
#1 Colorado-Based Lender and Preferred Lender
U.S. Small Business Administration

ALAMOSA • CENTER • CORTEZ
DURANGO • PAGOSA SPRINGS • SAGUACHE

fswb.bank

866.641.3792 | info@fswb.com

Member FDIC. Equal Housing Lender.
Equal Opportunity Employer.



1st SouthWest Bank

COMMUNITY AT OUR CORE

est 1999

ARBOR HOUSE INN

BED & BREAKFAST ON THE RIVER

31358 US Hwy 160 | South Fork, CO 81154 | 719.873.5012
www.arborhouseinnco.com • info@arborhouseinnco.com

HAEFELI'S HONEY FARMS

Premium High-Altitude CLOVER HONEY
WHOLESALE • RETAIL

Monday - Saturday 9 - 5
425 Grand Avenue • Del Norte, CO 81132
719.657.2044
www.haefelihoney.com

EXIT
EXIT SILVER THREAD REALTY
RESIDENTIAL / VACANT LAND
FARM & RANCH / COMMERCIAL

BUYING OR SELLING in Creede?

LET'S WORK TOGETHER!

Intelligent MARKETING TOOLS

CLINT WILSON
Broker Associate

CLINT@EXITSILVERTHREAD.COM
ADMIN@EXITSILVERTHREAD.COM

719.849.8131
719.873.EXIT(3948)

@EXITSILVERTHREADREALTY

I can't wait to hear from you.

PRODUCTION

Mo Bentz

Properties Artisan
(they, them, theirs)

Mo is a props artisan, multimedia craftsperson, and former ranch hand from Scio, OR. This is their third season with CRT, and they could not be happier to be back in the mountains. Mo has a degree in Theatre Fabrication from Cornell College and has worked with theatres across the country in props and scenic painting. Mo's other passions include singing, being in the great outdoors, breakfast food, and the *Matrix* movies. They send love to their siblings and friends and to their sweet cat Merlin.

Megan Burns

Stitcher/Wardrobe
(she, her, hers)

Meg is currently a junior at Colorado Mesa University, pursuing a Bachelor of Fine Arts. This is her second summer at CRT, and she is so excited to be here! Being around such an amazing group of creatives pushed her to be a better person. She can't wait for you to see the shows we have all worked so hard on!

David Cleghorn

Sound Engineer
(he, him, his)

David is a senior theatre education major at Stephen F. Austin State University. He's been involved with over 20 productions, including Assistant Sound Design for *Our Town*, Lighting Design for *Sing to Me Through Open Windows*, and Head Electrician for *Ajax in Iraq*. David has worked for the Angelina Arts Alliance in Lufkin, TX, as an audio technician on touring shows such as *Charlie and the Chocolate Factory*, *Anastasia*, and *A Charlie Brown Christmas*. David has served as Vice Chair for the USITT Student Chapter of SFA, President of the Beta Phi cast of Alpha Psi Omega, and Student Representative on the Theatre and Dance Council of SFA. David is set to graduate in May 2024. This is his first season with Creede Repertory Theatre.

Vee Council

Carpenter

Vee is a graduate of Abilene Christian University in Abilene, Texas, with a bachelor's in Theatre. In addition to scenic carpentry, Vee is a writer, trained dancer, and skilled choreographer. Vee hopes to write for film and TV, and with spare time, watch, just, SO many birds. All the birds.

Mikaela Dalke

Properties Carpenter
(she, her, hers)

Corin W. Davis

Scenic Charge
(he, him, his)

Corin is a scenic artist and designer from Ocean Springs, Mississippi. He is currently attending Mississippi State University, where he is completing a BA in Communications with a concentration in theatre. He plans to get an MFA in Scenic Design. Some of his favorite works include *It's a Wonderful Life: A Live Radio Play*, *Once on this Island*, and *Pipeline*.

our company

Lillian Febler

Costume Shop Manager
(they, them, theirs)

Lillian is a theatrical costume technician from New York City, specializing in hand embroidery, fine vintage repairs, historical costuming, and cosplay, with a master's degree from the Fashion Institute of Technology. Outside of theatre, Lillian is a researcher in early twentieth century medical history, the history of women in medicine, and World War I history. This is their third year working with Creede Repertory Theatre since 2015. Find Lillian on Instagram @Patternermage.

Garner

Stitcher
(they, them, theirs)

Garner is a senior at Missouri State University working on their degree in Technical Theatre with an emphasis in costume design. They are originally from Houston, Texas, where they got their start in theatre at a local community college and eventually went on to work as a costume technician for the Texas Renaissance Festival. Garner is excited to be part of the team at Creede Rep this summer!

Molly Gillard

Light/Sound Swing
(she, her, hers)

Molly was born and grew up in Colorado. She's very excited and grateful for the opportunity to be working with CRT for the first time. She has worked with various professional theater companies in Colorado for the past six years, including Theatreworks, The Millibo Art Theatre, The Fine Arts Center at Colorado College, and Mountain Rep Theater. Some highlights of recent work she's been a part of are: *Where Did We Sit on the Bus?*, *Guadalupe in the Guest Room*, and *In the Heights* at the Fine Arts Center. She believes strongly in making theatre a diverse and inclusive space that prioritizes safety, empathy, and conversation. She'd like to thank her parents and theatre family for their ever-present support and encouragement.

Brenna Halvorsen

Wardrobe Supervisor
(she, her, hers)

Brenna is a recent Arizona State University graduate. After focusing on costume design during college, she is very excited to jump into a different role and manage costumes from backstage. She hopes everyone enjoys the shows!

David Hintz

Carpenter/Welder
(he, him, his)

David is a junior at Mississippi State University pursuing his BA in Theatre. When he is not creating theatre, he is playing lacrosse, guitar, juggling, or doing improv with Lab Rats Comedy.

Preston Hunt

Lead Electrician
(he, him, his)

Preston is from Wichita, KS, and is excited to return for his second season at CRT. He is a rising senior at Oklahoma City University pursuing a BFA in Lighting Design and Technology. CRT credits include *Steel Magnolias* and

Serving the San Luis Valley since 1949



THE MONTE VISTA COOP
MVCOOP.COM

719-852-5181 | MONTE VISTA, COLORADO

Community Committed, Agriculturally Driven



MUSIC IN THE MOUNTAINS
CLASSICAL MUSIC FESTIVAL
JULY 6-30, 2023

Experience it!

SEE CRITICALLY ACCLAIMED,
WORLD-RENOWNED MUSICIANS
IN DURANGO, COLORADO



JOIN US FOR AN
EXCEPTIONAL SUMMER
MUSIC FESTIVAL WITH
MUSICIANS OF THE
HIGHEST CALIBER FROM
ACROSS THE COUNTRY.



For more information, call 970.385.6820 or visit MusicintheMountains.com

Habitat for Humanity ~ Building Houses ~ Building Hope



Habitat Store
507 Main Street, Alamosa
Open Tue-Sat 9am-3pm



tel: (719) 589-8688 restore@slvhabitat.org

New & Gently Used Building Materials - call for donation pick-up

DURANGO PLAYFEST
June 28 – July 2, 2023

5th annual festival featuring Richard Kind, Ray Abruzzo and Wendie Malick.



Info at durangoplayfest.org



our company

Sherwood: The Adventures of Robin Hood. Other credits include lighting design for *The Play that Goes Wrong* (Oklahoma City University/Lyric Theatre of Oklahoma) and *The Magic Flute* (Oklahoma City University); Assistant LD for *The Nutcracker* (Oklahoma City Ballet); and Production Electrician for *Marisol* and *Hansel and Gretel* (Oklahoma City University).

L Knight

Stitcher/Wardrobe
(they, them, theirs)

L is part of the wardrobe team. They just recently graduated from Colorado Mesa University where they spent four years acting, costume/makeup designing, and participating in the costume construction of the school's productions. This is L's second season working with CRT, and L is very excited to spend another summer in this beautiful town.

Adam Lamb

Stage Supervisor
(he, him, his)

Kyle Leineweber

Technical Director
(he, him, his)

After getting his MFA in Technical Direction at Northern Illinois University in 2015, Kyle worked at the Washington National Opera as Technical Assistant for *The Ring of the Nibelung* in 2016. He then moved to Illinois to work for Upstaging, where he helped engineer and build scenery and displays for trade shows, concerts, and sporting events all over the world. In 2021, Kyle came back to Creede for CRT's outdoor season. He and his wife, Amanda, whom he married on the CRT Mainstage in 2015, decided to stay. Since then, he has continued to work in CRT's scene shop in the summer and as Facilities Associate in the winter months.

Willow McGinty

Lighting Supervisor
Lighting Designer - *Ask a Kid*
(they, them, theirs)

A Coloradan through and through, Willow is elated to spend the summer in the mountains for their fourth season at CRT. Since earning their BFA in Applied Theatre Technology and Design from MSU Denver, Willow has worked as a Lighting Designer and Stagehand all along the Colorado Front Range and beyond. In various capacities from Electrician to Designer, Willow has been lucky to be a part of several events and productions, including *Jurassic World: The Exhibition* (Denver, CO & San Diego, CA 2022), *Cirque: Spirit of Christmas*, (Gaylord Rockies 2022), and *A Million First Days*, a play honoring Carlotta Walls LaNier (Curious Theatre Company 2021). Willow spends their time outside the theatre guzzling coffee, loving on their pit bull, Gracie, and escaping into science fiction.

Lia Claire Morris

Sound Supervisor
(she, her, hers)

Lia is a talented Sound Designer and Music Composer from Mississippi. She is currently attending Mississippi State University, where she is pursuing a degree in Entertainment Technology. Lia's passion for music and sound design led her to work with various production companies across Mississippi for live sound. She is known for her skills in sound design and music composition in theatre and short films. With her determination to succeed, she hopes to make sound a more prominent role in theatre and film.

Amanda Relaford

Properties Supervisor
Props Designer - *The City Dog & The Prairie Dog*
(she, her, hers)

Amanda earned an MFA degree in Properties Design and Management from the University of Illinois at Urbana-Champaign in 2015. Her professional credits include Assistant Properties Coordinator for *The Ring of the Nibelung*, produced by the Washington National Opera at The Kennedy Center for Performing Arts in 2016. She has had the pleasure of working as a Props Artisan at the Aspen Music Festival and a Puppet Builder at the Center for Puppetry Arts in Atlanta. Amanda also served as the Properties Manager for the Paramount Theatre in Aurora, Illinois, from 2016 to 2018. In 2021, she designed the sets for both *Red Riding Hood* and *An Iliad*, which were performed outdoors. She is overjoyed to be back in Creede and is thrilled to be joined by her husband, Kyle Leineweber, whom she married on the CRT Mainstage eight years ago.

Tiffany Stone

First Hand
Costume Designer - *Ask a Kid*
(she, her, hers)

Tiffany just graduated from Otterbein University with her BFA in Theatrical Design and Technology, with an emphasis in costume construction. At Otterbein, she has worked as a Draper and Wardrobe Lead for many of the productions produced, including *Something Rotten*, *Pajama Game*, and *The Tempest*. Additionally, she has just completed her internship capstone at Eric Winterling and Bethany Joy Costumes in New York City, where she spent the semester working alongside industry professionals making costumes for stage and screen. She is a Texan at heart and carries it with her to every state she finds herself working in. She would like to thank Creede Repertory for this opportunity to come back for another wonderful summer of theatre.

Jesse Wade

Associate Technical Director
Scenic Design - *Ask a Kid*
(he, him, his)

This is Jesse's second year at CRT. He is the Technical Director at Mississippi State University and also works in scenic design and production photography. Some of his previous work has appeared at Georgia College & State University, The Huron Playhouse, and Rocky Mountain Repertory Theatre. This year, he spoke on a panel at the Southeastern Theatre Conference about collaboration in educational theatre. He is very passionate about sandwiches.

EDUCATION

River Hetzel

Backdrop Designer & Book Illustrator - *The City Dog & The Prairie Dog*
(they, them, theirs)

This is River's second year working with CRT. River is a current studio art painting and ASL student at Arapahoe Community College and has also studied acting and design and technology theatre at UNCo. River is so grateful to be able to share their art in such a fun setting! River offers a huge thank you!



"COTTONWOOD PASTURE, TAOS" 16"x20" OIL ON LINEN PANEL

RON LARIMORE
-TAOS-

135 N. PLAZA, TAOS
575-770-4462
LARIMORE.FASO.COM

WHILE ENJOYING CREEDE PLEASE VISIT US IN TAOS!

Your Future Begins Today with RG BANK!

Monte Vista • Alamosa • Pagosa Springs



www.RGBANK.bank

Member FDIC

Equal Housing Lender

NMLS# 421822



Troy A Plane Insurance Agcy Inc
Troy A Plane, Agent
1639 Grande Avenue
Monte Vista, CO 81144
Bus: 719-852-3548

Family.
Friends.
Community.

We're all in this together.

State Farm® has a long tradition of being there. That's one reason why I'm proud to support The Creede Repertory Theatre.

Get to a better State®



1211007

State Farm, Bloomington, IL

Lily Balogh

Choreographer - *Ask a Kid*
(she, her, hers)

Lily is a native New Yorker and received her training at the School of American Ballet, Central Pennsylvania Youth Ballet, and Pacific Northwest Ballet. She danced professionally with New York City Ballet, Ballet Next, Ballets with a Twist, PDX Contemporary Ballet, and Opera Ballet Vlaanderen. She spearheaded the BFA dance track at Abilene Christian University during her five-year artist-in-residency. She is currently the Assistant Artistic Director of Ballet Lubbock and also teaches at Texas Tech University and Ballet Institute New York. She is thrilled to be part of the CRT team this summer!

Kate Bashore

Teaching Artist - Design Camp
(she, her, hers)

Kate is a lighting designer for theatre, dance, and opera, and her work has been presented in New York City, Colorado, and regionally across the United States. Recent designs include: *The River Bride* and *Kinky Boots* (Arvada Center); *Little Women* (Theatreworks); and *Memphis* (Town Hall Arts Center). In addition to her own designs, Kate has served as an Assistant and Associate Designer for productions on and off Broadway, as well as national and international operas. She has also served as the Associate Lighting Director for Lincoln Center Festival and Fall for Dance Festival in NYC, working with international companies and designers to bring their work to the New York stage. Kate is the Director of Dance Production at the University of Colorado Boulder and lives in Boulder, Colorado.

Zayaz Da Camara

Teaching Artist - Musical Theatre
(he, she, they)

Zayaz is thrilled to be returning to Creede as a Musical Theatre instructor, having first joined Creede Rep for the 2018 season. Past Creede credits include: Uncle Henry/Emerald City Guard in *The Wizard of Oz*, Franklin Hart Jr. in *9 to 5 The Musical*, and Reginald/Michael Stamford in *Miss Holmes*.

Diana Grisanti

Playwright - *The City Dog & The Prairie Dog*
Diana is a playwright and educator whose work has been produced across the country. *The City Dog & The Prairie Dog* marks her fourth collaboration with Creede Rep, the first three being *Derring-Do*, *El Guayabo/The Guava Tree*, and *Casa Alfonso*. Other plays include *Lawbreakers! (a fast and furious history of women's suffrage)* (StageOne Theatre); *Bowling for Beginners* (Vanderbilt University); *The Patron Saint of Losing Sleep* (Actor's Theatre of Charlotte); *River City* (National New Play Network); and *The Starkweather-South High School Physics Club First Annual End-of-Year Lock-In, or Ghost Party* (Cleveland Play House). Her audio-play, *Vanessa in Bed*, will be available later this year through Audible Theatre. Diana teaches dramatic writing at Ball State University.

Jenni Harbour

Director - *Ask a Kid*
See bio on page 78.

Meghan Kern

YAOT Tour Manager
(she, her, hers)

This is Meghan's first time at Creede Rep, and she is very excited! Previous credits include PA - *Mary Poppins* (Theatre Under the Stars); PA - *Sherlock Holmes and the Case of the Jersey Lily* (Alley Theatre); and ASM - *TUTS: A Celebration of Houston Stories and Songs* (Theatre Under the Stars).

Christina Lee

Teaching Artist/Childcare Provider
(she, her, hers)

Christina is an educator that loves theatre, the outdoors, and adventure! She has worked as a theatre teacher, director, actor, designer, and volunteer. A public school teacher for 15 years, she currently works as a gardener and outdoor educator in Corpus Christi, TX. When not in the classroom or exploring the world, she hangs out on the beach with her spouse, adult children, and many dogs!

Emiliano Messiez

Composer - *The City Dog & The Prairie Dog*
(he, him, his)

Based in NYC and originally from Argentina, Emiliano is a Composer, Pianist, and Music Director; founder of *Típica Messiez*, a ten-piece tango orchestra; and composer of *The Guava Tree* and *Casa Alfonso*, both musicals commissioned by Creede Rep for their Young Audience Outreach Tour. He is also the Composer of *Bordello*, a new musical by Barbara Bellman, and the orchestrator of *Ghost in the Machine*, a new musical by Janine Robledo. Emiliano has played with some of the world's top musicians, including Paquito de Rivera, Diego el Cigala, and Raul Jaurena. Emiliano began playing the piano at the age of 3. From there, he dedicated his life to music, studied, and graduated from the National Conservatory in Buenos Aires and the Contemporary School of Music.

Steve Moulds

Playwright - *Ask A Kid*

Steve Moulds has been a Jerome Fellow at The Playwrights' Center, an NNPN Playwright in Residence at Curious Theatre, a Writer in Residence at Vanderbilt University, and a Kentucky Arts Council Fellow. Plays include *Sergio's Museum*; *Emergency Prom*; the Humana Festival anthology *Oh, Gastronomy!*; and *The Wedding Guest* (Actors Theatre of Louisville). Steve has cowritten four plays with his spouse, Diana Grisanti: *Enter Ghost*, and *The Two Lobbyists of Verona* (Kentucky Shakespeare); *The Stranger and Ludlow Quinn*; and *The Baker Goes to War*. His adaptations of *Six Characters in Search of an Author* and *Kafka's Metamorphosis* are published by Playscripts and have been performed around the world. Steve holds an MFA from the Michener Center at UT Austin. He is also a *Jeopardy!* champion.

Terry Stansberry

Childcare Provider
(she, her, hers)

One of Creede's newest residents, Terry is excited to embark on her first season with CRT. She brings three decades of early childhood education and teaching experience, including Owner/Operator of her Home Childcare/Enrichment Program, employment in State-Funded Preschools, and Head Start Programs. Terry loves animals; in the 1980s

Need a convenient branch? We have one that fits in your pocket!

Our Mobile Banking App can manage your accounts on the go!

Pay *any* bill

Deposit checks

Send money with Zelle®

Debit card control

Set spending limits or instantly turn your debit card on or off

Other Mobile Services

Open deposit accounts online

Review & sign bank documents online

Contactless Payments

(Apple Pay®, Google Pay™, or Samsung Pay® enabled devices)



LEARN MORE AT:

www.slvfed.bank



San Luis Valley Federal Bank

COMMITTED TO YOUR SUCCESS



FDIC

719-589-6653

she was a zookeeper, primarily caring for North American mammals and nursery babies; from 2008–2010 she obtained certification as a Dog Obedience/Behavior Management Instructor and Pet Groomer, which shaped her pet-sitting service that she continues to offer in Creede! Terry is proud of her three successful adult children and her delightful grandson. She enjoys nature, long walks, camping, hiking, fishing, biking, road trips, and strength training.

Jenny Van Ry

Accompanist – Musical Theatre Day Camp

William Ward

Costume Design - *The City Dog & The Prairie Dog* (they, them, theirs)

Will is a Costume Designer, Puppet Builder, and Cat enthusiast from Southeastern Kentucky currently residing in New York City. William works as Event Costume Designer at the McKittrick Hotel, and as Puppet Draper for Rockefeller productions. Returning to CRT, William has worked as Costume Shop Manager Summers '20- '21 and Designer for *Red Riding Hood*, *The Tree Watcher*, and Assistant Designer for *El Guayabo/The Guava Tree*. They are excited to be returning to Creede and to help create another wonderful production for this year's YAOT tour. Other Design credits include: *Addams Family* (Wagon Wheel '22), *Brigadoon* (Wagon Wheel '22), *Cinderella* (Wagon Wheel '22), *The Rocky Horror Show* (Wagon Wheel '21), *Spring Awakening* (TXST '21), *The Other Shore* (TXST '20), and *References to Salvador Dali...* (TXST '19).

Matt Zambrano

Director – *The City Dog & The Prairie Dog* (he, him, his)

Matt is a Latino Actor, Writer, Teaching Artist, and Director based in Denver. Having spent the past decade in New York, he moved back to Colorado in 2022 and was a member of the performing company at CRT, appearing in *Native Gardens*, *Sherwood*, and *Boomtown!*. He also served as the Equity, Diversity, Inclusion, and Access consultant for *Casa Alfonso* and is thrilled to be directing this year's YAOT tour. Directing credits include: national tours: *The Nat Geo Amazing Almanac Trivia Show (Nat Geo Kids)*; Luigi Lemoncello's *Library-Live!* (Penguin Publishing); *The Story Pirates Live!*; and *Spy on History!* (Workman Publishing). Regional credits include: *Aladdin Kids*, *The Jungle Book Kids*, *The Lion King Kids* (Disney Theatrical Group); and *Le Mystère* (French Institute of NY). For more info visit www.MattZambrano.com.

ASL INTERPRETERS

Bethany Blankenship

(she, her, hers)

Bethany has been a sign language interpreter for 13 years, starting her career in Austin, Texas, and then continuing her journey in Colorado Springs, Colorado, and most recently, Dubuque, Iowa. She has been signing for over half her life and is so grateful to the Deaf community for being her teachers, mentors, and friends over the years and sharing their language with her. For the last six years, Bethany has taken on a new role as a mentor to the next generation of interpreters, which includes working with students as they prepare to interpret theatrical productions happening within the community. When she's not interpreting, Bethany enjoys getting out in nature, doing yoga, and playing the piano.

Haley Hegemen

(she, her, hers)

The Deaf community has shared the great gift of their language with us. May we use it to bring the stage to life for everyone!

Jennifer Jackson

(she, her, hers)

Jennifer has been interpreting in Colorado since 2017. She has two forms of certification in the interpreting field and strives to become legally qualified in the near future. As a staff interpreter for Access 2 Sign Language out of Colorado Springs, she works closely with the Deaf community and strives to make the world more inclusive! She wants to thank the Deaf community for sharing their wonderful, complex language with her and for always making her feel welcome. Having grown up in the theatre, Jennifer loves to bring performing arts to life for the Deaf community as a way to mix her two passions. Jennifer would also like to thank Creede Repertory Theatre for this wonderful opportunity and for their commitment to diversity and inclusion!

PATRON SERVICES

Heidi Carann Snider

Patron Services Associate

See bio on page 63.

Sammy Heroux

House Manager

(he, him, his)

Sammy is an undergraduate senior studying Theater Management and Global Health at the University of Miami and is thrilled to join the Creede community and CRT for the first time. Sammy is from Middleborough, Massachusetts, and began working as a House Manager for UM on *The Three Musketeers*, *The Rover*, and *Lucky Stiff*. His professional career began at the acclaimed regional theater GableStage as Marketing Intern and later as House Manager for the Florida premiere of *Boca*. While working for the Weston Theater Company last summer, Sammy had the opportunity to house manage the productions of *Marry Me a Little*, *Hair*, and *Steel Magnolias*. He would like to thank the Creede community for welcoming him with open arms and hopes that they enjoy this season!

Bryan Lucchesi

House Manager/Marketing Associate

(he, him, his)

Bryan is thrilled to be joining Creede Repertory Theatre for the summer of 2023! A Colorado native, he is currently pursuing his BFA in Acting and BSEd in Theatre Education from Missouri State University. There, he is the president and founding member of Bear Bones Productions (@BearBonesMSU on Instagram), a student group devoted to nontraditional theatre. He would like to thank his incredible family for always encouraging him to follow his dreams.

Libby McShane

Patron Services Associate

(she, they)

Libby is blessed to be a part of the company here at CRT.



Connecting Cultures Along the Upper Rio Grande

Community Radio Means:

Local DJs

Local News and Music

Local Programs

Regional and Cultural Programs

National Programming like NPR (National Public Radio)

Public Service Announcements and much more!!

**528 9th Street - Alamosa, CO
719-589-8844**

our company

Libby has been a participant in The KID Show at Creede Rep since 2016 and hasn't looked back since. She was a very active participant in her high school theatre department at Shawnee Mission East in Prairie Village, Kansas, and is very excited for her future as a Cardinal at Ball State University with a major in Theatre Education in the fall. She would like to thank her grandparents and her parents for their constant support in her endeavors in the theatre world. Follow her on Instagram @mclibster.

Sierra Stallman

Patron Services Associate
See bio on page 63.

Kat Trinqu

Patron Services & Development Associate
(she, her, hers)

Kat is an undergraduate student studying theatre and psychology at Mississippi State University. She hails from a military family and moved around during her childhood, but she considers New England home. In her free time, she can be found reading, hiking, performing, and spending time with her cat. She is so excited to be working at Creede Repertory Theatre with some of her best friends this summer and is thankful to everyone at CRT.

Kae Milne Twichell

Patron Services, Engagement & Access Associate
(they, them, theirs)

Kae is scholar, administrator, and artist from South Florida specializing in dramaturgy and audience engagement. After receiving their Bachelor of Social Work with a double major in

Theatre from Florida State University, they worked as an arts administrator in the Education Department at the Broward Center for the Performing Arts. Kae is currently pursuing an MA in Theatre & Performance Research, once again at Florida State University. Recent show credits include *The Last Days of Judas Iscariot* (Dramaturg), *Cancel Me* (Dramaturg), *The Freedom of the City* (Lighting Designer), *Machinal* (Lighting Designer), and *The Bald Soprano* (Assistant Director). Given their passion for accessibility, history, and education, Kae is excited to join Creede Repertory Theatre this summer as the Patrons Services, Access & Engagement Associate!

Teresa A. Watkins

Patron Services Manager
(she, her, hers)

Teresa is excited to be returning to CRT for the 2023 season! She first came to Creede and CRT in 1976 with her family and has been coming back ever since. She was a company member in 1992 as a Scene Shop Intern and in 2001 and 2002 as Costume Shop Foreman. Teresa was an English and Theatre Arts teacher in Texas and New Mexico for 24 years before moving on to different opportunities. Teresa holds a BA in Theatre Arts from Texas Wesleyan University, an MA in English from Texas Woman's University, and an MEd in Curriculum and Leadership from Adams State University. She has a grown son, Thomas, and family fur babies. Teresa is *thrilled* to be returning to CRT and Creede!

PLEASE NOTE: The videotaping or making of electronic or other audio and/or visual recordings of this production and distributing recordings or streams in any medium, including the internet, is strictly prohibited, a violation of the author(s)'s rights and actionable under united states copyright law.

* Members of Actors Equity Association, the Union of professional Actors and Stage Manager in the United States.



Actors' Equity Association

Creede Repertory Theatre operates under an agreement with Actors' Equity Association, the union of professional Actors and stage Managers in the United States.



The Director is a member of the **STAGE DIRECTORS AND CHOREOGRAPHERS SOCIETY**, a national theatrical labor union.

IN MEMORY

Rebecca “Becky” Balding Conway
1948–2022
Acting Company Member 1968



Rebecca Balding was the first theatre major I ever met. Although we dated briefly, we were never an “item.” Our friendship was durable however, and when I settled in Seattle and entered the University of Washington in 1968, I got a letter from Becky, who was by then at the Creede Repertory Theatre. She described it as a wacky thespian boot camp. She said everybody worked all day and night, and she loved it. I considered a trip to Creede, to see her at work, but Washington to Colorado was a long way to ride the motorcycle. I reconnected with Becky in 1971, when I learned she was in Chicago hoping to launch her acting career. When I visited in March, she introduced me to her roommate, Christine Brandt. That was an introduction that changed my life.

A half century later, we lost Becky, but we were fortunate to have shared years of adventure and friendship. The two old friends were each other’s bridesmaids. We became friends with Becky’s husband, Jamie Conway, and the four of us rafted down the Grand Canyon section of the Colorado River together. Becky was extremely successful on television, appearing in shows with peers like Billy Crystal and Ed Asner. She also starred in a couple of movies, and she met her future husband, James Conway, on the set of *Silent Screem*, a feature film that he was directing. Despite her many successes, she remained very interested in CRT, and she often made trips to Creede to see the latest productions. It didn’t hurt that her old college roommate, Christy Brandt, was in many of those shows. Becky was not only a talented actor, but she was also a caring and generous friend. She raised a family of two wonderful girls and remained by Jamie’s side until the end. Becky was famously outspoken and outrageous at parties, but she was also a sensitive friend who tried to advocate for everybody she knew and believed in. To say she will be missed is a meager understatement, and my own debt to her can never be paid.

—John Gary Brown

From left Rebecca Balding, Kay Lancaster, Shari Roach Lacey in *Man for All Seasons* (1968). Photo by Dub Schaaf



Kenny “Ken” Burt
1949–2022
CRT Staff
Member 1989
& 1991–95



When I was eight years old, my very best friend moved across the alley from me. His name was Kenny Carl Burt. We both attended North High School in Denver. We both graduated from the University of Colorado in Boulder. Kenny received a degree in education and theatre. My degree was in history. We always stayed very close, even when Kenny studied at both Fort Lewis College and Arizona State. I always stayed in Denver. In the late eighties, he took a job at the Creede Repertory Theatre. My first comment was, *Where is Creede?* He told me that the theatre was a true jewel in the mountains, a mere five hours from Denver between South Park and Lake City. I went to visit him in Creede and immediately fell in love with the theatre, the town, and the carrot cake at the Creede Hotel. Kenny worked in various jobs at the theatre for several years. He eventually met his current wife at a dance at the OMI. He then taught English and speech at Alamosa High School for several years. Almost every summer, our family vacations were to Creede and Alamosa to see my best friend. About ten years ago, he was diagnosed with leukemia. A stem cell transplant gave him another ten years. He got a bad case of pneumonia in late summer 2022 and passed away. I have many great memories of Kenny and feel very grateful that he introduced me to the theatre at Creede.

—Gary Kring

Ken Burt with Artistic Director Richard Baxter (1994)



2023 CRT YEAR-ROUND STAFF

our staff



John DiAntonio
Producing Artistic Director
(he, him, his)

John has led Creede Repertory Theatre since 2017. John has a passion for developing new work and was fundamental in the creation and development of the Headwaters New Play Festival at CRT. His play, *Harry the Great*, was the first play workshopped and produced through the festival. He created the 10-Minute New Play Festival during his second season. John has acted in nearly 40 shows at CRT. Before joining the year-round staff in 2015, he worked for 12 years as an actor, director, playwright, and fight director in New York, Los Angeles, and Denver. DiAntonio has had ten original plays produced, including five that have toured around the Southwest. He earned his MFA from the National Theatre Conservatory. He and his wife, Caitlin, have three children, Leo, Sebastian, and Hazel.

john@creederep.com / (719) 658-2540 ext. 2005



Morgan M. Manfredi
Managing Director
(she, her, hers)

Since joining the CRT staff as Managing Director in January 2020, Morgan has enjoyed immersing herself in the community and serving on the boards of the Chamber of Commerce, Colorado Preschool Program, and the Silver Thread Byway. She brings to Creede over a decade of nonprofit theatre experience, including serving as Production Manager of American Family Theatre in Philadelphia, PA; Company Manager and Associate General Manager of Bucks County Playhouse in New Hope, PA; and Associate General Manager of McCarter Theatre Center in Princeton, NJ, who she represented in TCG’s Equity, Diversity, & Inclusion Cohort 2. Morgan met her husband Tyler while they were CRT company members together in 2011; the pair have a rambunctious 4-year-old and a menagerie of furry critters.

morgan@creederep.com / (719) 658-2540 ext. 2009



Brittnei Shambaugh Addison
Education Director
(she, her, hers)

Brittnei has had the pleasure of teaching, directing, and performing across the country but is beyond grateful to call Creede home. As an educator, she believes strongly in the power of Arts Integration and is focused on exploring the “who, why, and how” rather than the “what.” She holds an MFA in Directing from the University of Hawaii at Manoa and has previously worked as the Education Associate at Cleveland Play House and

the Artistic Associate at the Honolulu Theatre for Youth. Brittnei is the proud secretary of the Creede School District Board of Directors. She shares her love of the arts with her husband, Lavour (a company actor), her two-year-old daughter, Aria (a dancing QUEEN), and their newborn son, Idris (a vocal MASTER).

brittnei@creederep.com / (719) 658-2540 ext. 2011



Jake Harbour
Director of Production & Facilities
(he, him, his)

Jake is a Sound and Scenic Designer, Music Composer, and Technical Director. He has worked for many prominent theatres in the Denver and Atlanta areas and has been nominated for four Henry awards and one Suzi Bass award. Jake has 12 years of university experience teaching classes ranging from Sound and Light Design, Scenic Design, and Technical Direction, as well as carpentry and welding. He holds an MFA in Technical Direction from the University of Northern Illinois.

jake@creederep.com / (719) 658-2540 ext. 2007



Lori Heinrich
Development Director
(she, her, hers)

Embarking upon her third season with Creede Rep, Lori is grateful to be part of this incredible theatre family and the beautiful town of Creede, which stole her heart from her first visit as a child. As a military spouse, Lori had the opportunity to live from coast to coast and work in corporate, nonprofit, research, and public-school settings. She is experienced in grant writing and management, accounting, public and donor relations, and event planning. An incurable extrovert, Lori finds great joy in spending time with CRT’s wonderful patrons and fostering those relationships. In her spare time, you’re likely to find her painting, reading, knitting, or hiking with her husband, Karl, and their three sons.

lori@creederep.com / (719) 658-2540 ext. 2006



Kate Berry
Marketing Director
(she, her, hers)

Originally from Chicago, Kate first experienced Creede as an acting company member in 2005. She fell in love not just with the theatre but with Creede itself and has made it her home since 2011. A theatre artist for all of her adult life, Kate was Creede Rep’s Associate Artistic Director until 2022 when she transitioned into the Marketing Director position and couldn’t be happier to spend her time spreading the good word about Creede

and Creede Rep. As an acting company member for 13 seasons, some favorite shows include: *The Road to Mecca*; *The 39 Steps*; *The (curious case of the) Watson Intelligence*; *Talley's Folly*; and more recently, *Steel Magnolias*. Member of AEA and SAG-AFTRA.

kate@creederep.com / (719) 658-2540 ext. 2015



Jenni Harbour

Associate Education Director

(she, her, hers)

Jenni is grateful and humbled to be part of Team Education at CRT! She is a teaching artist,

actor, and director who earned her MFA at Northern Illinois University, which included a summer intensive at the Moscow Art Theatre. She has taught Theatre for the University of West Georgia, Blue Lake Fine Arts Camp, Hardin-Simmons University, Young Audiences of Abilene, and the National Center for Children's Illustrated Literature before finding her artistic home at Creede Rep and the Creede School District. She is passionate about creating access to arts education for all learners and introducing new students to Shakespeare.

jenni@creederep.com / (719) 658-2540 ext. 2012

PART-TIME & SEASONAL STAFF



Vernese Best

Education AmeriCorps Member

(she, her, hers)

Hailing from the Gullah Geechee Islands of South Carolina, Vernese is very excited and honored to be a part of Team Education at CRT as an AmeriCorps member. She has been involved with theatre from a very young age, and to be able to incorporate education has been the best of both worlds. As a part of Team Education here at CRT, she does Theatre Hour at the Creede Early Learning Center; she's an assistant teacher at the Creede School District with the amazing Jenni Harbour; and offers her assistance to other staff members as needed. She wants to thank her parents, Rebecca and Isaac Cohen, who are her guardian angels.

vernese@creederep.com / (719) 658-2540 ext. 2008



Brooke Ophoff

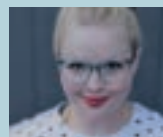
Development Associate & Company Photographer

Production Photographer - *Ask A Kid*; *Cinderella*; *The Royale*

(she, her, hers)

The magic of CRT captivated Brooke from the very first show she saw in 1996, and her love of all things CRT continued to grow over the years: she watched as many shows as she could and even participated in several Kid Shows. Brooke moved back to Creede last summer after living in Norway for several years where she pursued her master's and developed her photography business. Brooke is excited to step into her two roles at CRT as the Development Associate working with the lovely Lori Heinrich and as the Company Photographer. She photographed last year's Gala alongside Brownie and is thrilled to continue photographing at CRT. Say hi to her when you see Brooke and her camera around CRT this year!

brooke@creederep.com / (719) 658-2540 ext. 2013



Bethany Talley

Company Manager

(she, her, hers)

This is Bethany's 12th season with the Creede Repertory Theatre. Last season she worked behind the scenes as the choreographer for *Casa Alfonso*. Other CRT credits include *The Tree Watcher*, *The Guava Tree*, *Little Shop of Horrors*, and *The Wizard of Oz*. You may have seen her onstage as Greta in *General Store*, Cookie in *Ghostlight*, Rebecca Gibbs in *Our Town*, a Hot Box Dancer in *Guys and Dolls*, and more. Now based in northeast Ohio, Bethany spends her winters working as the Artistic Director of Reach Out and Dance!, the community education program for Ballet Excel Ohio. She extends a special thank you to Graham, Edie, Eilean, and CRT for their commitment to parent artists.

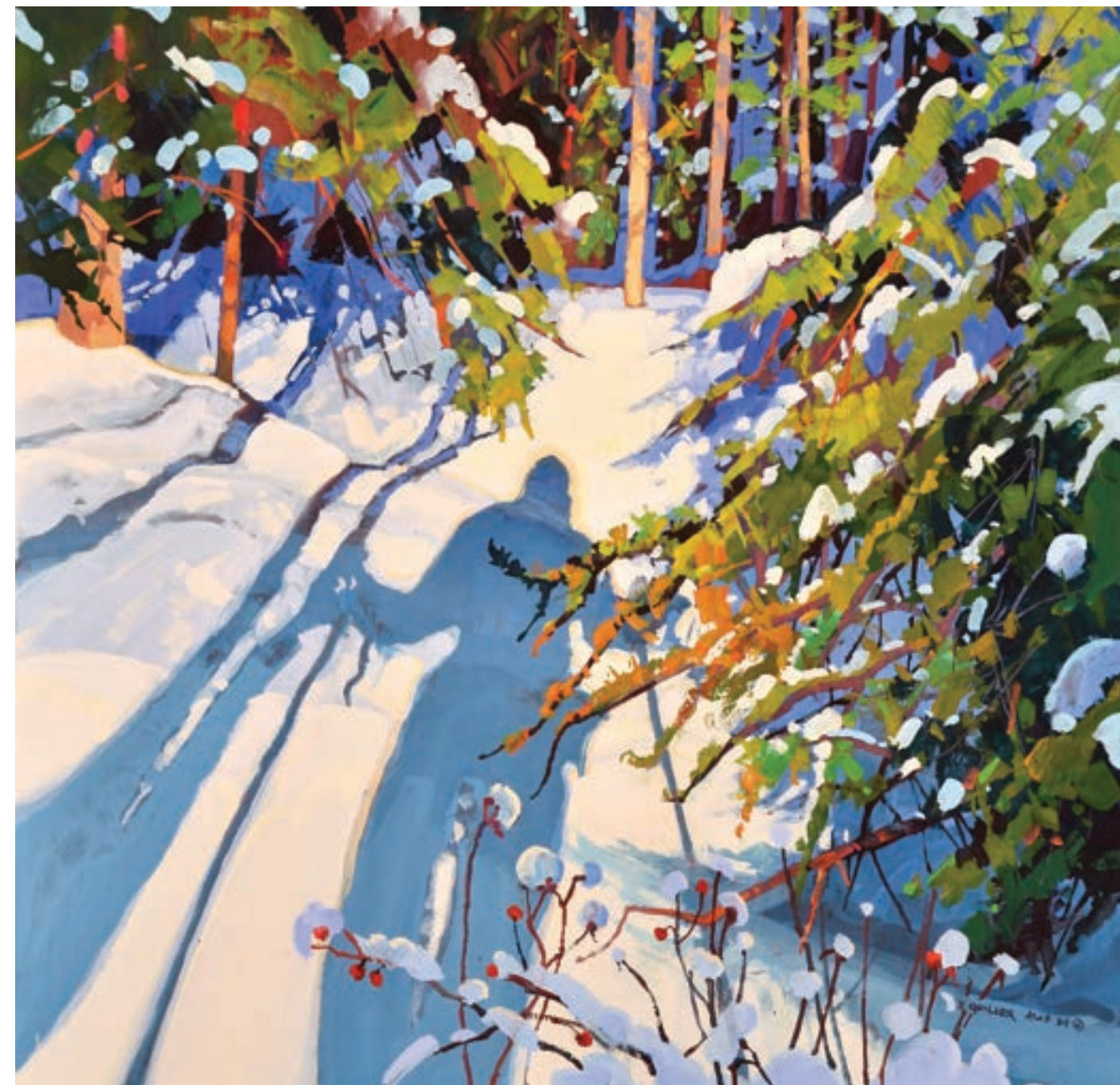
btalley@creederep.com / (719) 658-2540 ext. 2014

Quiller Gallery

Established 1970

Paintings and Prints by Stephen Quiller ♦ Capturing the Spirit of the San Juans

Clay, Bronze, Glass, Basket and Wood Forms; Gemstone and Horsehair Jewelry, all by Colorado Artists



"Retreating Shadows"

23 1/2" x 23 1/2"

Casein on Walnut Panel

SUMMER SEASON — OPEN DAILY
PO Box 160 ♦ 110 Main Street ♦ Creede, Colorado 81130 ♦ 719.658.2741

www.quillergallery.com



Wason Ranch

19082 Highway 149

Creede, CO 81130

(719) 658-2413